



Cromwell Road, TW13

£625,000

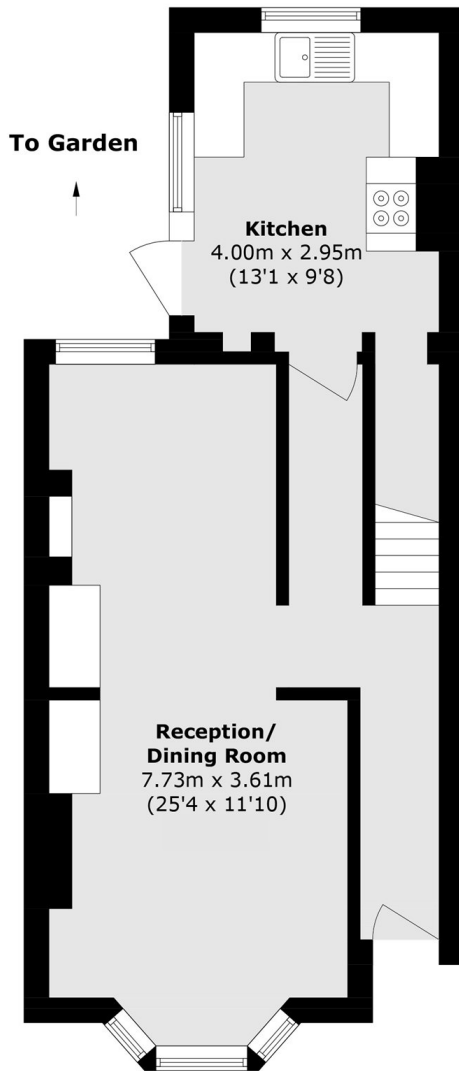
An attractive three bedroom detached Victorian house, full to the brim with original features, flooring and high ceilings, offering a really great home for the family.

Perfectly positioned in the "Royals" for access to Feltham train station with its high speed links to London Waterloo, Cromwell Road is a pretty residential street with a great community spirit.

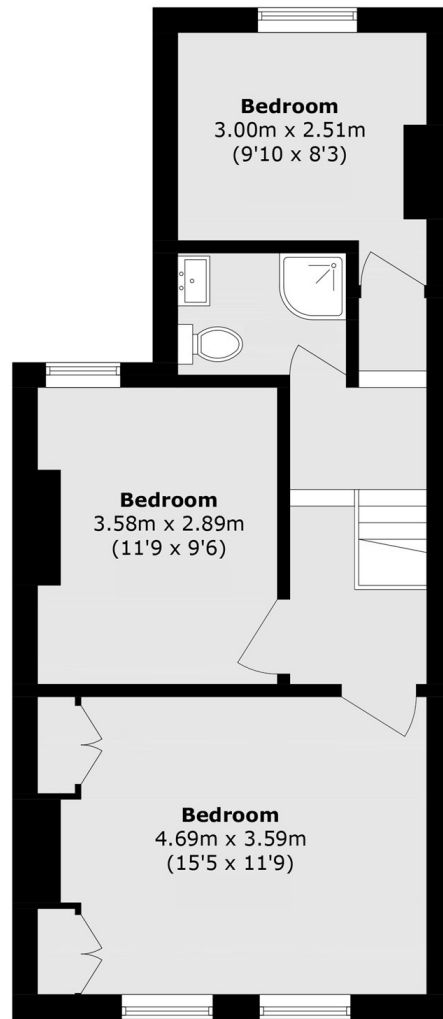
Features

- Victorian
- Detached
- Three Bedrooms
- Original Features
- Private Garden
- Prime Location

Cromwell Road, Feltham, TW13



Ground Floor



First Floor

Total area (approx.): 95.0 sq. m (1022.5 sq. ft)