



## LONGFIELD AVENUE, W5

£2,500 pcm

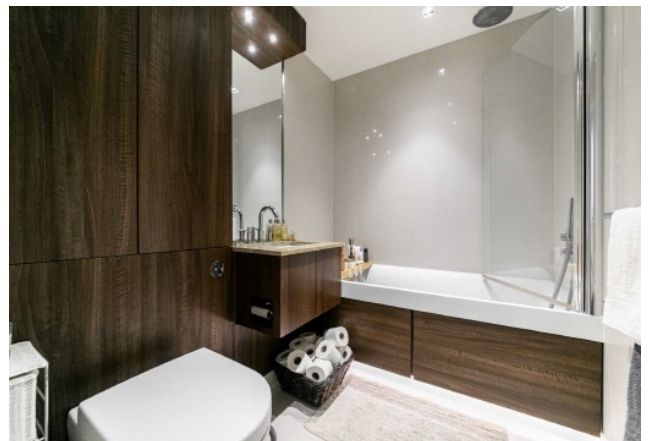
Modern one bedroom apartment on the first floor of the sought-after Dickens Yard development. Featuring hardwood oak floors and a bright open-plan living space opening onto a large private balcony. Residents benefit from an on-site gym, swimming pool, spa and a 24 hour concierge service.

- Modern One Bedroom
- First Floor with Lift Access
- Approx. 546 sq/ft
- 24 Hour Concierge
- Gym, Spa, and Pool
- Ealing Broadway

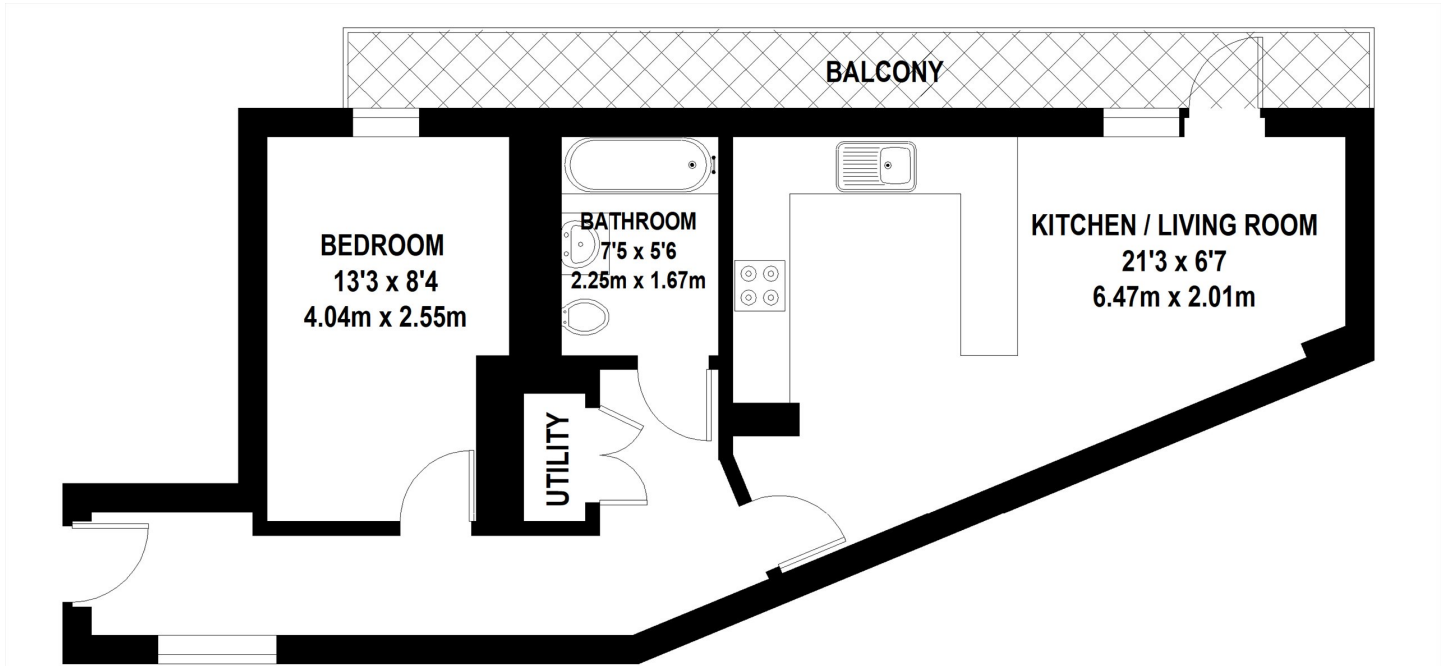


## ABOUT THE HOME

Dickens Yard is surrounded by a thriving community with a wide array of restaurants, shops, bars, and cafes. Ealing Broadway station, just moments away, provides convenient access to the Elizabeth, District, and Central lines, making commuting into the City a breeze.







**TOTAL APPROX. FLOOR AREA 546 SQ.FT. (50.72 SQ.M)**

Whilst every attempt has been made to ensure the accuracy of the floor plan contained here, measurements of door, windows, rooms and any other items are approximate and no responsibility is taken for any error, omission, or mis-statement. This plan is for illustrative purposes only and should be used as such by any prospective purchaser. The services, systems and appliances shown have not been tested and no guarantee as to their operability or efficiency can be given

© 2023 (ID964906)

**LiFE RESIDENTIAL**

203 Trentham Court, Victoria  
Road, London, W3 6BT  
Sales: 020 3668 1112  
Lettings: 020 3668 1111

Energy Rating: . We aim to make our particulars both accurate and reliable. However they are not guaranteed; nor do they form part of an offer or contract. If you require clarification on any points then please contact us, especially if you're traveling some distance to view. Please note that appliances and heating systems have not been tested and therefore no warranties can be given as to their good working order.