



Guide Price

£500,000

Freehold

4x  1x  2x 

**Silver Way, Wickford,
Essex, SS11**

OVER 60?

Secure this property
for up to **59% less!**

 **DOUGLAS
ALLEN**
Helping you move forwards



Main features

- Substantial family home with annexe potential
- Positioned just a few minutes walk to High Street and station
- Reception hall/office space with large lounge and separate dining room
- Plenty of off street parking and garage

Accommodation

GROUND FLOOR

Reception Hallway/Office Space: 13'2 x 9'4 (4.02m x 2.85m)

Lounge: 15'1 x 12'4 (4.60m x 3.76m)

Kitchen: 12'4 x 9'7 (3.76m x 2.92m)

Utility Room

Dining Room: 11'8 x 11'6 (3.56m x 3.51m)

Shower Room

Cloakroom

FIRST FLOOR

Landing

Bedroom 1: 12'2 x 12'0 (3.71m x 3.66m)

Bedroom 2: 12'1 x 9'11 (3.69m x 3.02m)

Bedroom 3: 11'10 x 8'11 (3.61m x 2.72m)

Bedroom 4: 10'2 x 9'0 (3.10m x 2.75m)

Family Bathroom

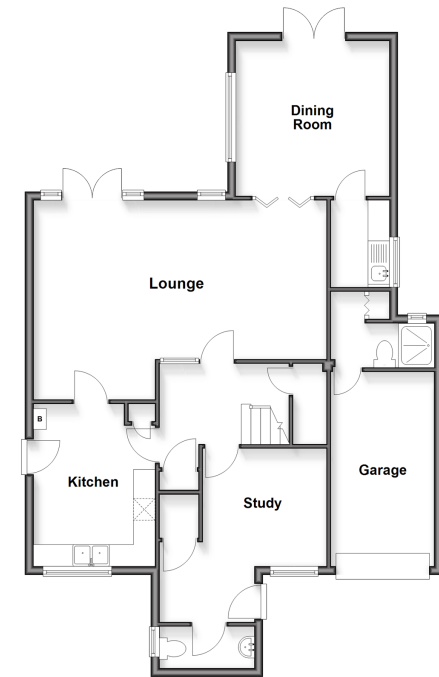
OUTSIDE

Rear Garden

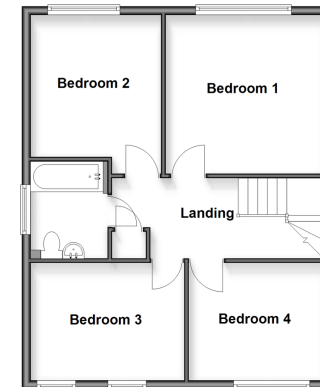
Garage

Driveway

Ground Floor
Approx. 93.8 sq. metres (1010.1 sq. feet)



First Floor
Approx. 57.4 sq. metres (618.3 sq. feet)



Call Wickford - 01268 561287 ■ douglasallen.co.uk

- Legal advice should be taken to verify fixtures/fittings, planning, alterations and/or lease details
- Appliances & services are untested, dimensions are approximate and floor plans are not to scale
- Through a Homewise Home For Life Plan people aged 60+ can secure this property for up to 50% less, by purchasing a Lifetime Lease.



53413231/20251127/RP/BH