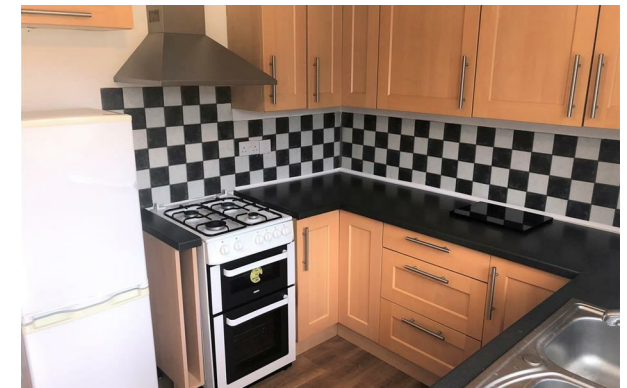


Horton & Senate



1 Gideon Close, Birmingham, West Midlands, B25 8LG

£1,050 Per Month

- 2 Bedroom Semi Detached House
- Off road parking to the rear
- Council Tax Band C
- Unfurnished
- Close to local amenities and public transport links.
- Available late May
- Gas Central heating
- EPC RATED C

1 Gideon Close, Birmingham B25 8LG

Horton & Senate are pleased to offer two bedroom modern semi detached property with off road parking to rear. Located within Cul-de-Sac close to local amenities and public transport links. Benefiting from double glazing, gas central heating and comprising of entrance hallway with staircase to first floor, lounge/diner, fitted kitchen with fridge/freezer, washing machine, cooker/hob and access to rear garden, fitted bathroom to first floor, master bedroom with fitted storage cupboard and rear garden gate access to rear.

2

1

null

C

Council Tax Band:









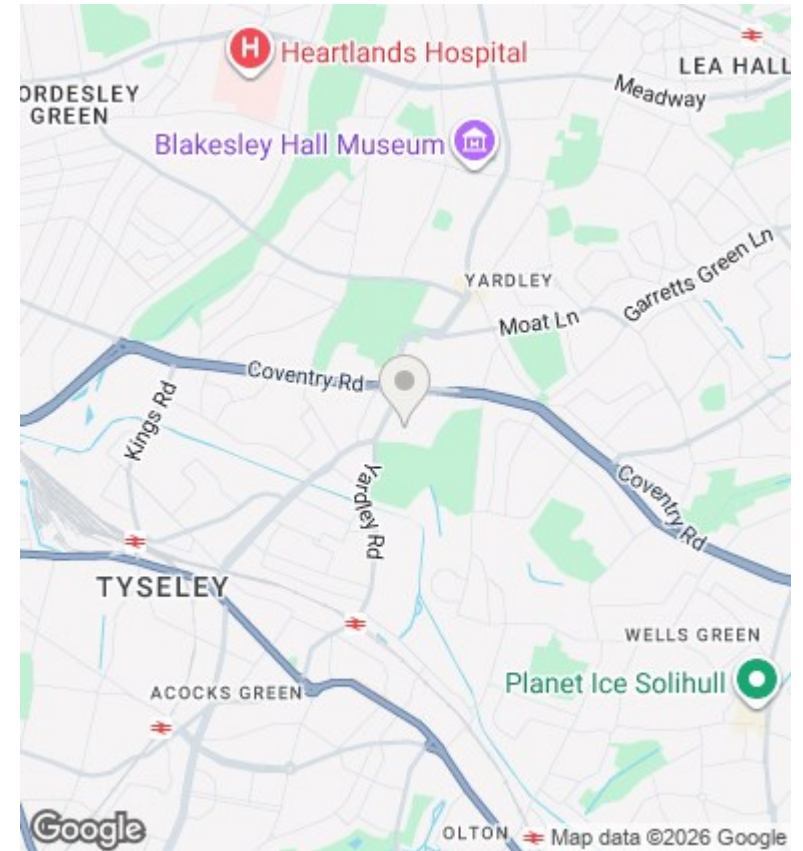
Directions

Viewings

Viewings by arrangement only. Call 01564 773200 to make an appointment.

Council Tax Band

B



Energy Efficiency Rating		Current	Potential
<i>Very energy efficient - lower running costs</i>			
(92 plus) A			88
(81-91) B			
(69-80) C		71	
(55-68) D			
(39-54) E			
(21-38) F			
(1-20) G			
<i>Not energy efficient - higher running costs</i>			
England & Wales		EU Directive 2002/91/EC	