



5 Blackdown Garth, Gunthorpe, Peterborough
£290,000

 **NEWTON FALLOWELL**

5 Blackdown Garth

Gunthorpe, Peterborough

This well-presented DETACHED CHALET BUNGALOW offers versatile and spacious accommodation, featuring TWO/THREE BEDROOMS and ONE/TWO RECEPTION ROOMS with a GARAGE and DRIVEWAY PARKING FOR MULTIPLE VEHICLES. Upon entering, you are welcomed into the entrance hall that provides access to the ground floor accommodation, including a bright and airy living room with ample space for both seating and dining furniture. The ground floor further comprises of a shower room fitted with a contemporary suite and practical tiling, a kitchen with a space and plumbing for free standing appliances and rear garden access. The flexible layout allows for one of the ground floor rooms to be used as a third bedroom or an additional reception room, depending on your requirements. Upstairs, the property benefits from two double bedrooms, with one of the bedrooms offering built-in wardrobes, along with a convenient WC. Additional features include a garage and driveway parking for multiple vehicles and further lawn frontage. The property is offered to the market with no onward chain. This chalet bungalow is conveniently situated within easy reach of local amenities, including shops, schools, healthcare facilities, and public transport links, making it well-suited for both families and downsizers alike. With its practical layout, generous room sizes, and desirable location.

Council Tax band: C

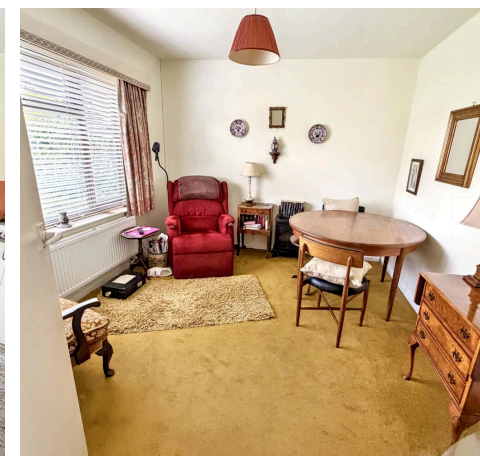
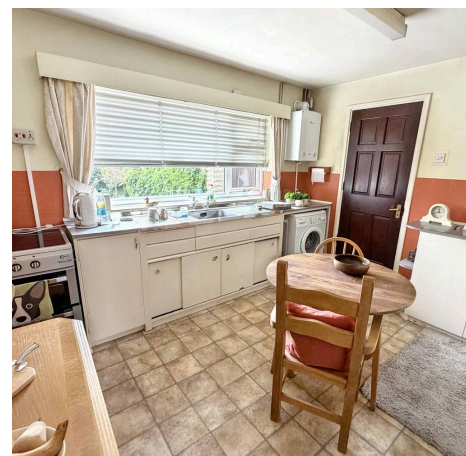
Tenure: Freehold

EPC Energy Efficiency Rating:

EPC Environmental Impact Rating:



NEWTON
FALLOW





Entrance Hall

Lounge

16' 8" x 11' 7" (5.09m x 3.53m)

Kitchen

11' 10" x 10' 11" (3.61m x 3.32m)

Dining Room/Bedroom 3

11' 1" x 8' 10" (3.39m x 2.68m)

Shower Room

6' 8" x 6' 0" (2.02m x 1.82m)

Landing

Bedroom 1

11' 2" x 9' 11" (3.40m x 3.02m)

Bedroom 2

12' 3" x 10' 5" (3.73m x 3.18m)

En-suite

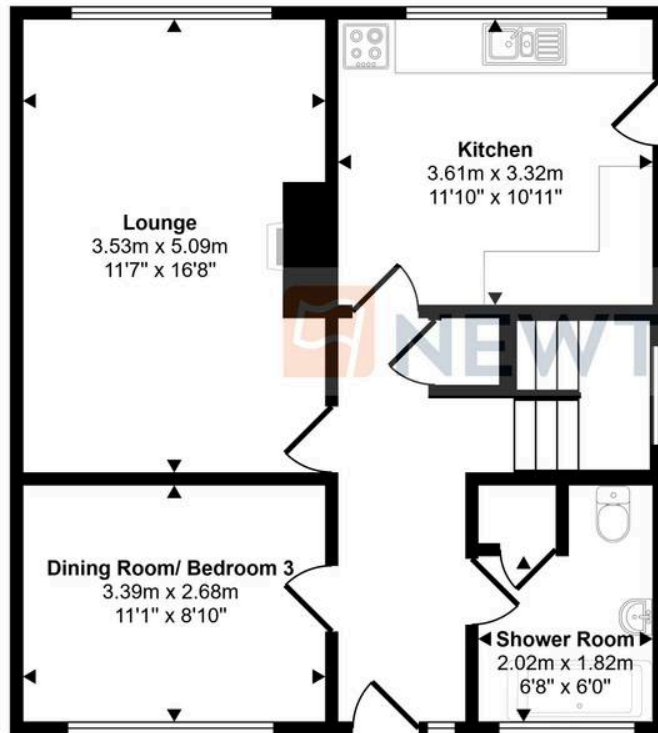
5' 0" x 4' 2" (1.52m x 1.26m)

Garage

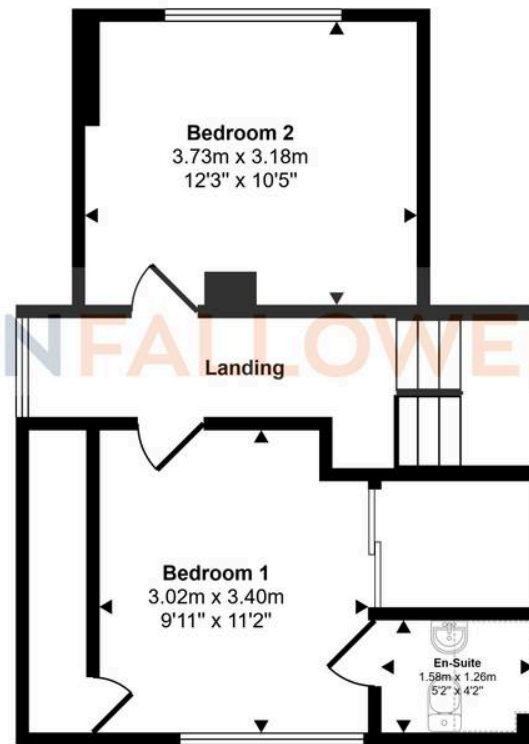
18' 3" x 8' 1" (5.55m x 2.47m)



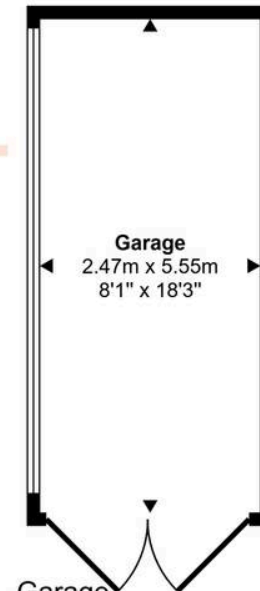
Approx Gross Internal Area
109 sq m / 1178 sq ft



Ground Floor
Approx 57 sq m / 617 sq ft



First Floor
Approx 38 sq m / 413 sq ft



Garage
Approx 14 sq m / 148 sq ft

Denotes head height below 1.5m

This floorplan is only for illustrative purposes and is not to scale. Measurements of rooms, doors, windows, and any items are approximate and no responsibility is taken for any error, omission or mis-statement. Icons of items such as bathroom suites are representations only and may not look like the real items. Made with Made Snappy 360.

Newton Fallowell - Peterborough

Newton Fallowell Estate Agents, 11 Skaters Way - PE4 6NB

01733 511225 · peterborough@newtonfallowell.co.uk · newtonfallowell.co.uk/peterborough