



## Highbury New Park, N5

£700,000

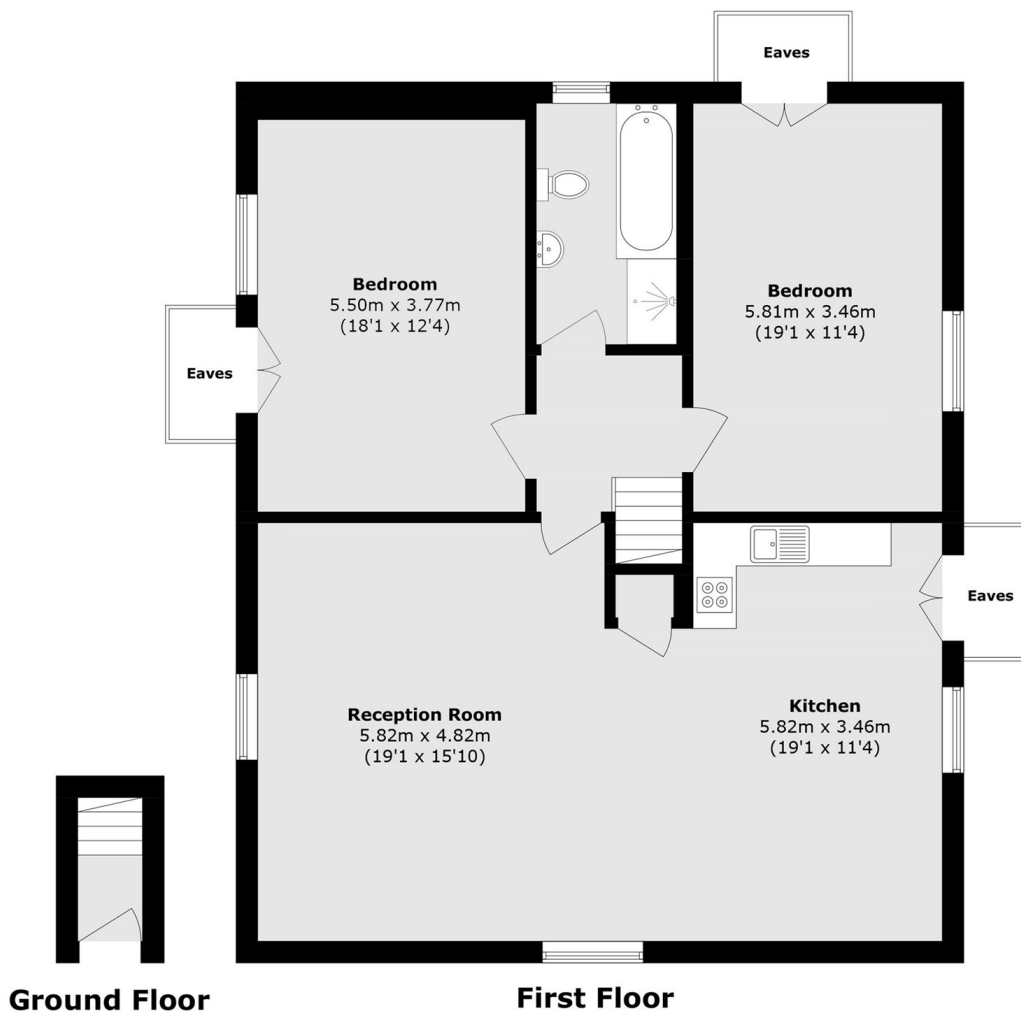
Set back from the road, this two bedroom flat is positioned on the top floor of a Victorian villa in Highbury. Offering open-plan living, two generous double bedrooms and well maintained communal areas.

The location offers convenient access to the greenery and amenities of Clissold Park, along with renowned shops at Highbury Barn. Transport links can be found at both Canonbury station (London overground) and Highbury & Islington station (National Rail & Victoria line).

### Features

- Two Bedrooms
- Top Floor
- Victorian Conversion
- Open-Plan
- Bike Storage

# Highbury New Park, London, N5



Total area (approx.): 112.5 sq. m (1210.9 sq. ft)  
(Excluding Eaves)