



Connells

Kindersley Close
EAST GRINSTEAD

Kindersley Close EAST GRINSTEAD RH19 3NJ

for sale guide price
£550,000-£575,000



Property Description

Nestled within a quiet and sought-after cul-de-sac, Kindersley Close is a deceptively spacious three bedroom detached home offering versatile accommodation across three reception spaces and a fantastic self-contained outbuilding perfect for multi-generational living, guest accommodation or a home office setup. The main house features a bright and welcoming layout, including three generous reception rooms on the ground floor, ideal for modern family life with dedicated areas for dining, relaxing and entertaining. Upstairs, there are three well proportioned bedrooms served by the family bathroom and en suite onto the master.

A standout feature is the detached outbuilding, complete with its own en-suite, providing exceptional flexibility for relatives, older children, workspace, or a studio environment a rare offering in prime residential locations.

Outside, the property enjoys a private rear garden, ideal for outdoor dining and family time, plus driveway parking to the front. Situated within easy reach of East Grinstead town centre, local schooling, green spaces and transport links, this property offers convenience and comfort in equal measure.



Entrance Hall

Downstairs Cloakroom

Living Room

16' 3" x 11' 2" (4.95m x 3.40m)

Reception Room

9' 11" x 7' 10" (3.02m x 2.39m)

Kitchen/Diner

17' 3" x 12' 11" (5.26m x 3.94m)

Utility Room

6' 9" x 3' 6" (2.06m x 1.07m)

Dining/Family Room

15' 4" x 11' 6" (4.67m x 3.51m)

Landing

Bedroom 1

10' 11" x 9' 9" (3.33m x 2.97m)

En Suite

Bedroom 2

11' x 9' 11" (3.35m x 3.02m)

Bedroom 3

8' 9" x 6' 9" (2.67m x 2.06m)

Family Bathroom

Garage

Annex

Living/Bedroom

17' 7" x 9' 6" (5.36m x 2.90m)

Shower Room

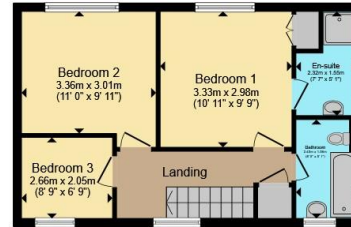








Ground Floor



First Floor



Annex

Total floor area 151.7 m² (1,633 sq.ft.) approx

This floor plan is for illustrative purposes only. It is not drawn to scale. Any measurements, floor areas (including any total floor area), openings and orientation are approximate. No details are guaranteed, they cannot be relied upon for any purpose and they do not form part of any agreement. No liability is taken for any error, omission or misstatement. A party must rely upon its own inspection(s). Powered by www.propertybox.io



To view this property please contact Connells on

T 01293 515 444
E crawley@connells.co.uk

57 High Street
 CRAWLEY RH10 1BQ

EPC Rating: D Council Tax
 Band: E

Tenure: Freehold

view this property online connells.co.uk/Property/EGR405487



1. MONEY LAUNDERING REGULATIONS Intending purchasers will be asked to produce identification documentation at a later stage and we would ask for your co-operation in order that there will be no delay in agreeing the sale. 2. These particulars do not constitute part or all of an offer or contract. 3. The measurements indicated are supplied for guidance only and as such must be considered incorrect. Potential buyers are advised to recheck measurements before committing to any expense. 4. We have not tested any apparatus, equipment, fixtures, fittings or services and it is in the buyers interest to check the working condition of any appliances.

Connells Residential is registered in England and Wales under company number 1489613, Registered Office is Cumbria House, 16-20 Hockliffe Street, Leighton Buzzard, Bedfordshire, LU7 1GN. VAT Registration Number is 500 2481 05.

See all our properties at www.connells.co.uk | www.rightmove.co.uk | www.zoopla.co.uk

Property Ref: EGR405487 - 0005