







5 Deepwell Court

Halfway • Sheffield • S20 4SW

Guide Price £375,000 - £400,000

Located on the highly sought-after Deepwell Court in Halfway, S20, this modern, fully refurbished and significantly enhanced detached family home offers stylish, move-in-ready accommodation, with excellent potential for further development. Benefiting from a driveway providing off-street parking, an integral garage, and beautifully landscaped gardens, the property has been thoughtfully upgraded throughout by the current owners, including a new kitchen, bathrooms, flooring, and external improvements. A welcoming entrance hall sets the tone for the light and airy interior. The elegant yet cosy living room features calm, neutral décor and plush carpeting, with contemporary glazed double doors opening seamlessly into the adjoining dining area—creating an ideal space for both everyday living and entertaining. The dining area flows into a stunning kitchen, fitted with a classic Shaker-style range of units, wood-effect worktops, and quality LVT flooring. A full suite of integrated appliances includes a Bosch oven and grill, dishwasher, fridge, and separate freezer. The kitchen also enjoys delightful views over the rear garden. Extending from the dining area is a spacious and highly versatile garden room, recently upgraded with a new roof and finished with stylish herringbone flooring. Flooded with natural light and complete with made-to-measure blinds, this impressive space offers flexible family living and direct access to the integral garage. The integral garage is currently utilised as a generous utility and storage space, complete with an electric roller door, and presents excellent potential for conversion into additional living accommodation, subject to the necessary consents. To the first floor, the property offers a well-proportioned front-facing principal bedroom, beautifully presented in neutral tones and benefiting from a modern en-suite shower room. There are two further double bedrooms, both tastefully decorated and featuring built-in wardrobes. A fourth bedroom, currently used as a dressing room, includes bespoke full-length wardrobes and could easily be reinstated as a bedroom if required. The family bathroom is fitted with a contemporary three-piece white suite, complemented by stylish tiling, vanity storage, and a heated towel rail. The property also benefits from an insulated loft space, ideal for storage and offering further potential for development, subject to the appropriate permissions. Externally, the home enjoys excellent kerb appeal, with a landscaped front garden and a driveway providing off-street parking. To the rear, the beautifully designed garden creates a superb outdoor retreat, featuring an attractive stone patio, decked terrace, level lawn, and well-stocked planted borders with a variety of flowers and greenery. Deepwell Court is ideally positioned within the popular Halfway area, offering excellent access to the Supertram network, Crystal Peaks Shopping Centre, and superb transport links via the Sheffield Parkway and M1 motorway—making it an ideal location for both families and professionals.





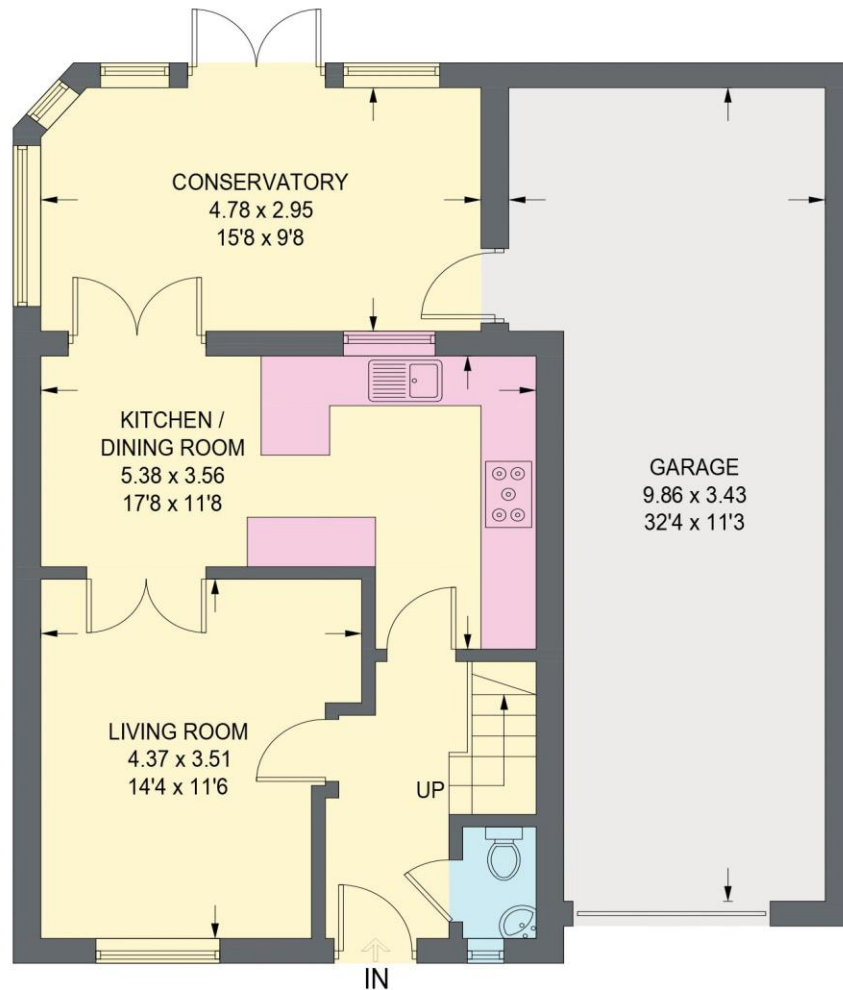
- Stunning 4 Bedroom Detached Family Home
- Quiet cul-de-sac Location
- Family Bathroom & Ensuite Shower Room
- Generous Garden Room
- Full Refurbishment from Current Vendors

- Modern Light & Airy Interior
- Landscaped Front & Rear Gardens
- Off Street Parking & Integral Garage
- Freehold
- Council Tax Band D, EPC Rating TBC

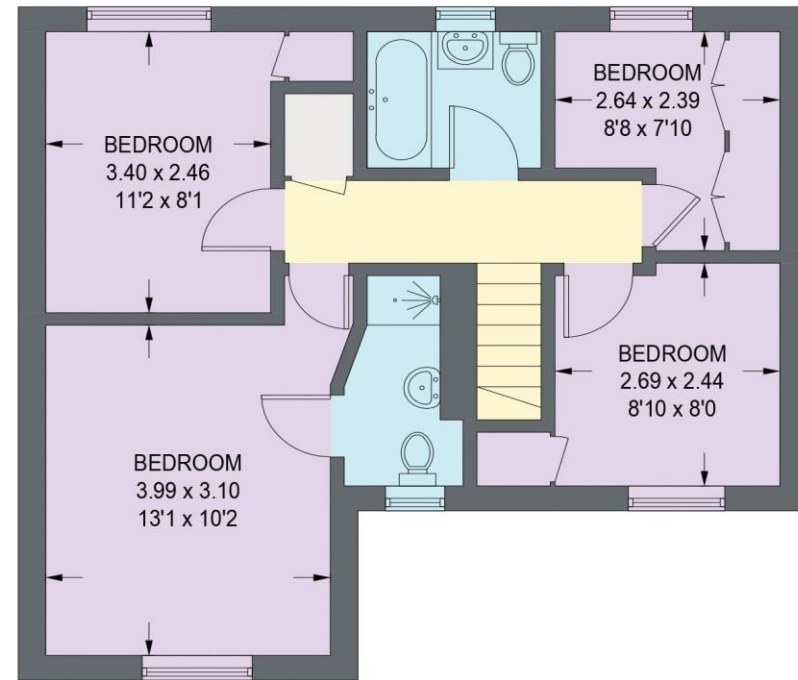


5 DEEPWELL COURT

APPROXIMATE GROSS INTERNAL AREA = 137.1 SQ M / 1475 SQ FT
(INCLUDING GARAGE)



GROUND FLOOR
86.8 SQ M / 934 SQ FT (INCLUDING GARAGE)



FIRST FLOOR
50.3 SQ M / 541 SQ FT

Illustration is for identification purposes only,
measurements are approximate, not to scale.

(IDMRP2025)

