



the
ANDERSON
Group exp

Tirmynydd Road, Swansea, SA4 3PB

Offers Over £550,000

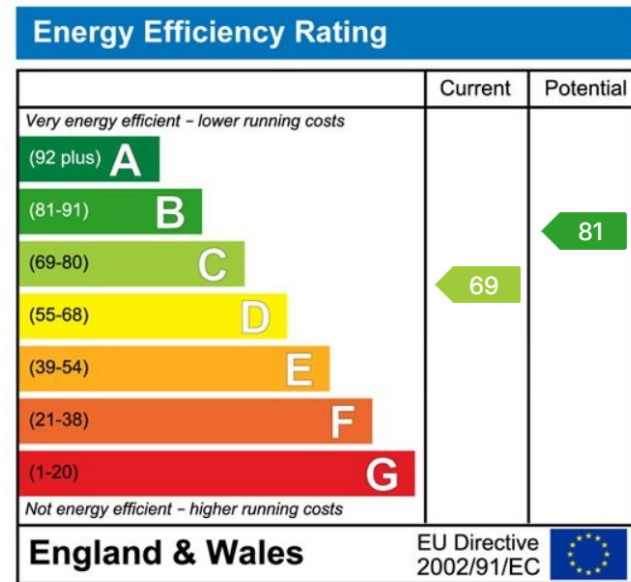
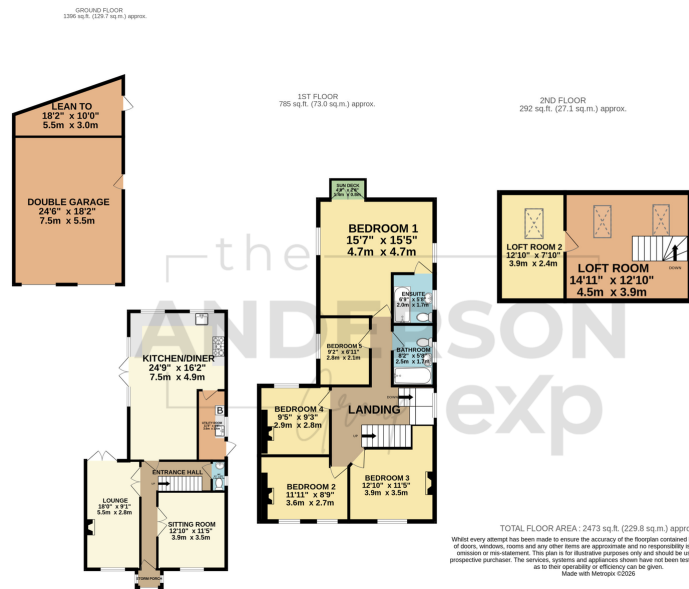
🛏️ 5 🚿 2 🚗 2



- Beautifully Presented Five Bed Detached Home
- Open Plan Kitchen/Diner/Family Room
- Family Bathroom, En-Suite to Master & Ground Floor WC
- Flexible Accommodation
- Loft Conversion with Two Rooms
- Utility Room
- Ideal Family Home
- Ample Driveway Parking & Double Detached Garage
- Access to Countryside Walks, Local Pubs & Shops
- Sought-After Community with Excellent School Catchments



Exceptional five bedroom detached family home located in the highly sought-after village of Three Crosses, offering spacious and well-balanced accommodation ideal for modern living. The property comprises an inviting hallway, two reception rooms, and a bright open-plan kitchen/diner, alongside a utility room and WC on the ground floor. The first floor features five generously sized bedrooms, including a master bedroom with en-suite, plus a family bathroom. The second floor provides two additional versatile loft rooms, perfect for guests, hobbies, or home working. The flexible layout caters to a range of lifestyles, particularly families or remote workers. Externally, the property benefits from a generous driveway and a double detached garage. Three Crosses is a popular village on the edge of the Gower Peninsula, known for its community feel, scenic walks, and local amenities, and lies within the Bish



01792 805075

Swansea, Mumbles & Gower

sales@melanieanderson.co.uk

Melanie Anderson Independent Estate Agents is an approved agent at eXp World UK Limited, trading as eXp UK, registered at C/O Corporation Service Company (UK) Limited, 5 Churchill Place, 10th Floor, London, United Kingdom, E14 5HU. Company number 12016573. VAT no 327 4120 29. If you have instructed another agent to sell your house and instructed eXp World Ltd to sell your property at the same time, then you could be liable to pay both agents.

It is recommended that you check the contract you have with your current agent.