



Connells

Brentor Road
Plymouth



Property Description

We are excited to introduce this well-presented two bedroom ground floor apartment to the market, situated in a popular residential location. Benefiting from two double bedrooms, lounge, kitchen, bathroom, a separate W.C., large rear garden with summer house and on-street parking.

Located in the central location of St. Jude's, close to a host of local amenities such as an array of shops and restaurants, local parks, well-regarded schools and a stone's throw away from the city centre, the historic Barbican and Plymouth Hoe whilst offering easy access to main transport links.

This accommodation comprises it's own private entrance, a beautifully presented bright and airy lounge with access to a large private rear garden, a well-appointed kitchen with matching wall and base units and built-in appliances, two good-sized bedrooms both benefiting from stunning bay windows and completing this apartment you have a bathroom comprising bath with overhead shower, hand basin and a separate W.C.

Externally, this property benefits from a large rear garden with a summer house, perfect for enjoying in the summer months and on-street parking to the front.

This apartment offers an attractive opportunity for a first-time buyer or investor, appealing to a wide range of buyers.

EARLY VIEWINGS ADVISED!

Lounge

11' 7" maximum x 13' 9" maximum (3.53m maximum x 4.19m maximum)

Kitchen

9' 1" x 6' 6" (2.77m x 1.98m)

Bedroom One

14' 5" maximum x 11' 8" maximum (4.39m maximum x 3.56m maximum)

Bedroom Two

12' 10" maximum x 11' maximum (3.91m maximum x 3.35m maximum)

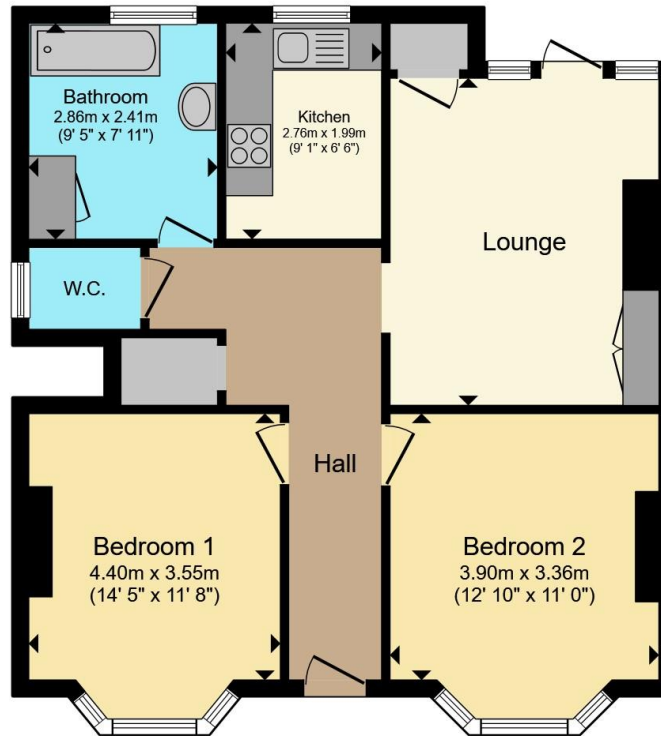
Bathroom

W.C.









Total floor area 66.0 m² (711 sq.ft.) approx

This floor plan is for illustrative purposes only. It is not drawn to scale. Any measurements, floor areas (including any total floor area), openings and orientation are approximate. No details are guaranteed, they cannot be relied upon for any purpose and they do not form part of any agreement. No liability is taken for any error, omission or misstatement. A party must rely upon its own inspection(s). Powered by www.propertybox.io



To view this property please contact Connells on

T 01752 674 467
E plymouth@connells.co.uk

32 Mannamead Road
 PLYMOUTH PL4 7AA

EPC Rating:
 Awaited

Council Tax
 Band: A

Service Charge: Ask
 Agent

Ground Rent:
 Ask Agent

Tenure: Leasehold

view this property online connells.co.uk/Property/PLH313584

This is a Leasehold property. We are awaiting further details about the Term of the lease. For further information please contact the branch. Please note additional fees could be incurred for items such as Leasehold packs.



1. MONEY LAUNDERING REGULATIONS Intending purchasers will be asked to produce identification documentation at a later stage and we would ask for your co-operation in order that there will be no delay in agreeing the sale. 2. These particulars do not constitute part or all of an offer or contract. 3. The measurements indicated are supplied for guidance only and as such must be considered incorrect. Potential buyers are advised to recheck measurements before committing to any expense. 4. We have not tested any apparatus, equipment, fixtures, fittings or services and it is in the buyers interest to check the working condition of any appliances.

Connells Residential is registered in England and Wales under company number 1489613, Registered Office is Cumbria House, 16-20 Hockliffe Street, Leighton Buzzard, Bedfordshire, LU7 1GN. VAT Registration Number is 500 2481 05.

See all our properties at www.connells.co.uk | www.rightmove.co.uk | www.zoopla.co.uk

Property Ref: PLH313584 - 0003