



W
WHITES

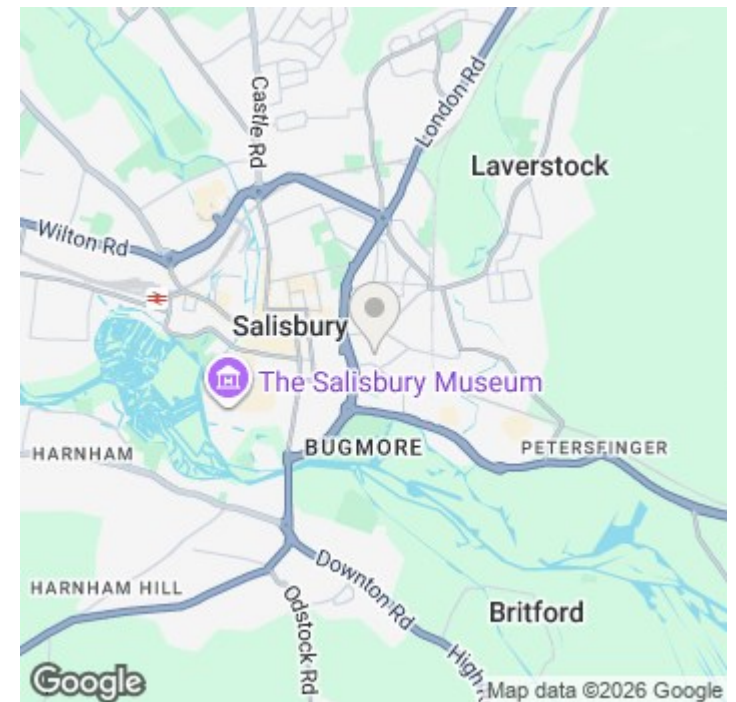
Flat 1, 37 Fowlers Road, Salisbury, Salisbury, Wiltshire, SP1 2QP

£685 PCM

About The Property

An immaculately presented, recently redecorated basement studio flat located within a converted Victorian mansion block in a prime residential area, just a short walk to the city centre. The accommodation comprises an entrance hall with a storage cupboard that leads through to the main living/sleeping area, featuring a large window overlooking the communal garden. The modern kitchen includes a four-ring gas hob, an electric oven, and space for a washing machine and a full-sized fridge freezer. Additionally, the studio features a good-sized bathroom with a thermostatic shower over the bath. The property is heated with gas central heating, is available for long-term tenancy, and is offered unfurnished.

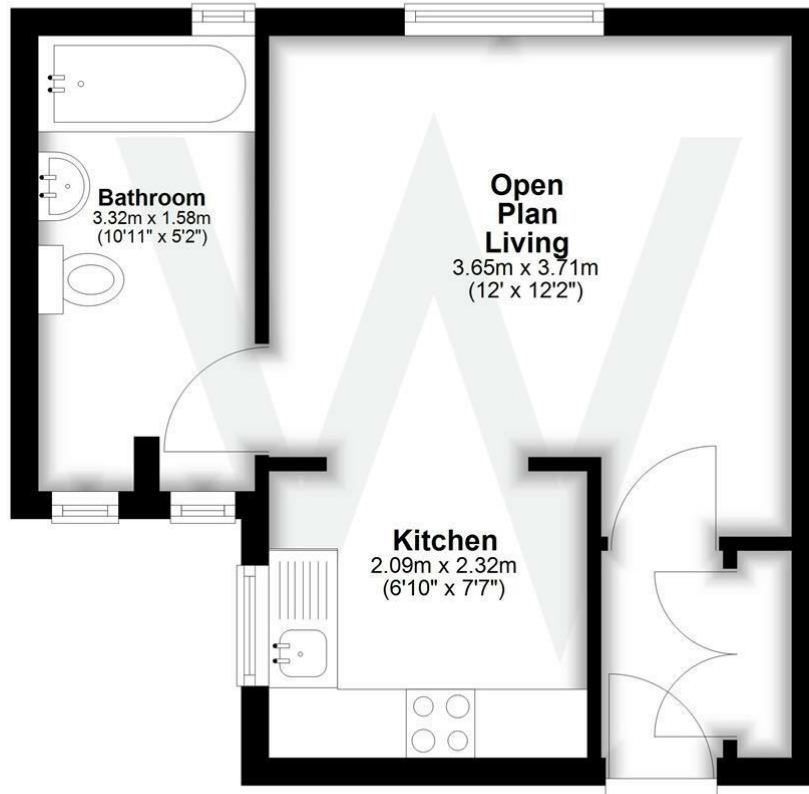
- Recent redecoration throughout
- Recent new carpets and vinyl
- Walking distance to city centre
- Studio flat i.e. no separate bedroom
- Council Tax Band A
- Gas combi boiler for c/h and h/w
- On street permit parking
- Unfurnished with carpets and blinds
- Professionally managed block
- Use of communal garden





Ground Floor

Approx. 25.4 sq. metres (273.8 sq. feet)



Total area: approx. 25.4 sq. metres (273.8 sq. feet)

Further Information

Let available date: 31st October 2025 NB: This date is provisional and will only be confirmed once referencing has been successfully completed.

Property type: Studio

Furnish type: Unfurnished

Deposit: £790

Local authority: Wiltshire

Council Tax: Band A

EPC: C(71)

Energy Efficiency Rating

	Current	Potential
Very energy efficient - lower running costs		
(92 plus) A		
(81-91) B		
(69-80) C	71	76
(55-68) D		
(39-54) E		
(21-38) F		
(1-20) G		
Not energy efficient - higher running costs		
England & Wales	EU Directive 2002/91/EC	