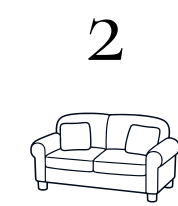


Ford House

Penny Glen, by Culzean

■ □ ■
c o r u m



Steeped in history and rich in charm, Ford House is a beautifully presented three-bedroom period cottage dating back to 1800, originally forming part of the celebrated Culzean Estate. Over the centuries, this distinguished home has been thoughtfully evolved into an outstanding family residence, where the timeless hallmarks of Scottish country living are seamlessly paired with carefully considered contemporary touches.







First impressions count, and Ford House delivers from the moment you step inside. A beautifully proportioned entrance hall sets the tone for the home; bright, welcoming and flowing naturally into the principal living spaces, it speaks immediately to the charm and character that runs throughout.

For those arriving from the garden or returning from the Ayrshire countryside, a dedicated rear entrance off the bootroom and kitchen provides the perfect practical arrival point. Fully equipped and thoughtfully designed, this hardworking space offers everything country living requires, from muddy boots to wet coats, before connecting seamlessly to the well-appointed dining kitchen beyond.





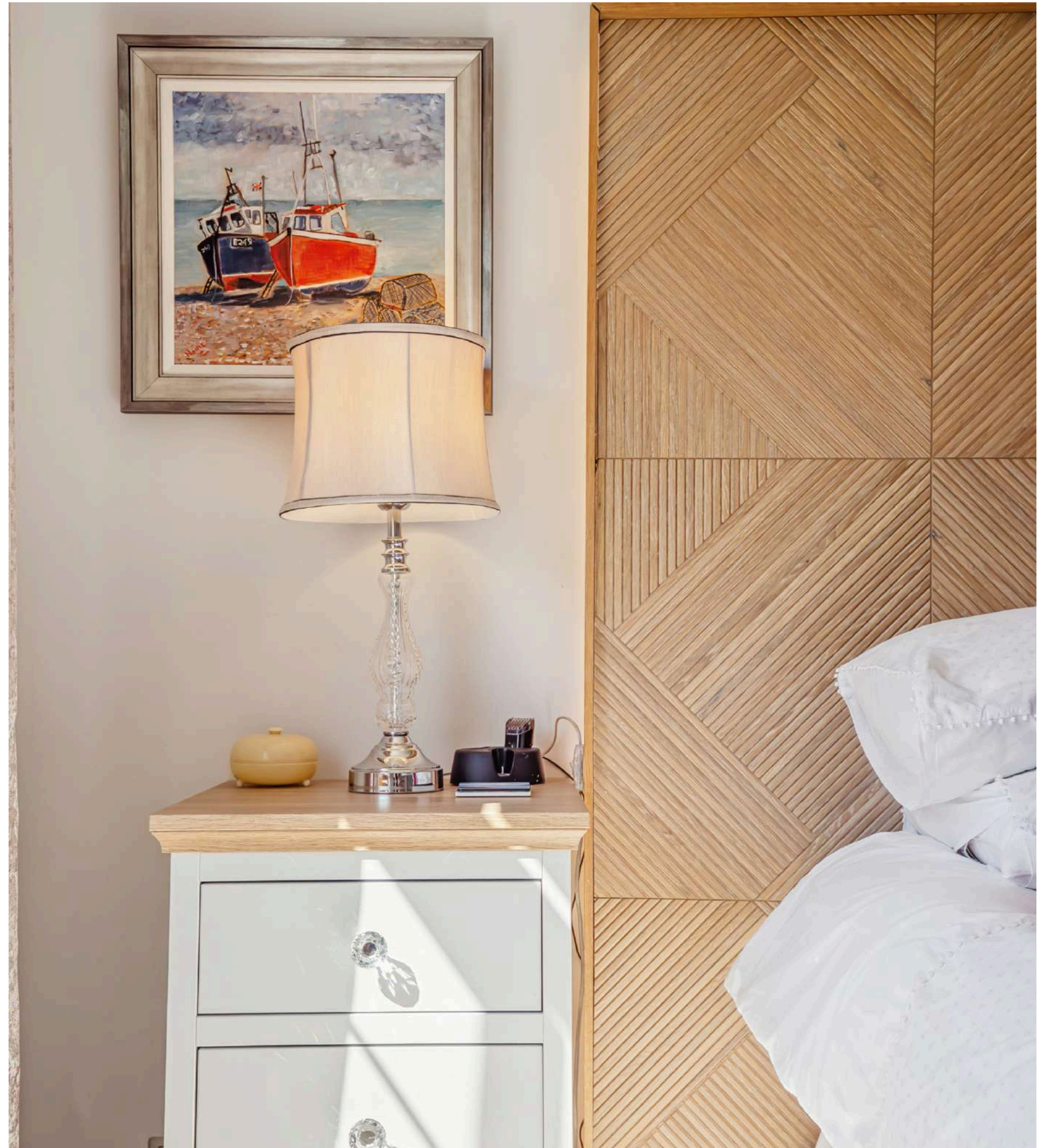
The dining kitchen itself is a particularly impressive space, combining modern functionality with period charm. Thoughtfully fitted out with an induction hob with integrated downdraft extractor, fully integrated appliances and generous storage, it also features an original stone wall - a beautiful and enduring reminder of the cottage's storied origins.

The heart of the home is a generous triple-aspect lounge of real warmth and character, where a striking feature stonework fireplace serves as a natural focal point; perfect for cosy evenings in. For more formal occasions, a substantial dining room with a log burning stove offers an elegant yet inviting setting for entertaining, whilst retaining all the warmth one would expect from a home of this character.



Upstairs, three well-proportioned bedrooms provide comfortable and versatile accommodation. The principal bedroom is a generous retreat, complete with a well-appointed ensuite shower room. The remaining bedrooms are served by a large, beautifully designed family bathroom, finished to a high modern standard that blends quality and style in equal measure.









The grounds of Ford House are a genuine extension of the home itself - a beautifully tended outdoor space that reflects the same care and attention found throughout the property. Framed by the rolling Ayrshire countryside and with open views stretching toward the Carrick Hills, the setting is one of real tranquillity and rural charm.

For those with a passion for growing, a productive kitchen garden and a series of well-stocked raised beds offer the pleasure of homegrown produce through the seasons; a nod to the self-sufficient spirit of the cottage's country estate origins. A charming summerhouse provides a peaceful retreat whatever the weather, whether used as a reading room, a creative space or simply a spot to take in the surroundings.

A variety of thoughtfully designed paved areas extend the living space outdoors, providing ideal settings for al fresco dining, entertaining or simply enjoying the Ayrshire air. Mature planting and carefully curated landscaping ensure that the grounds feel both established and loved, offering colour and interest throughout the year.





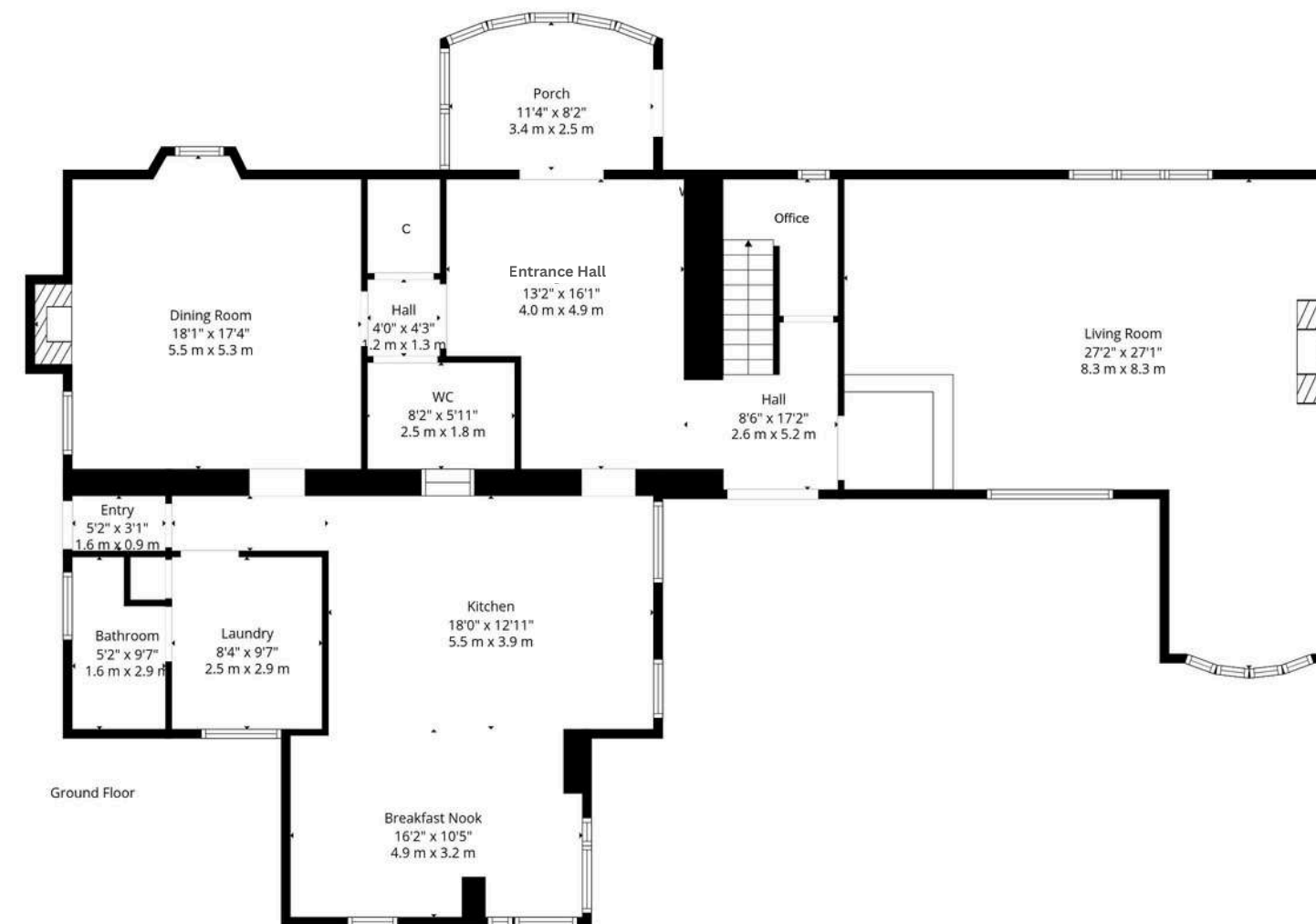
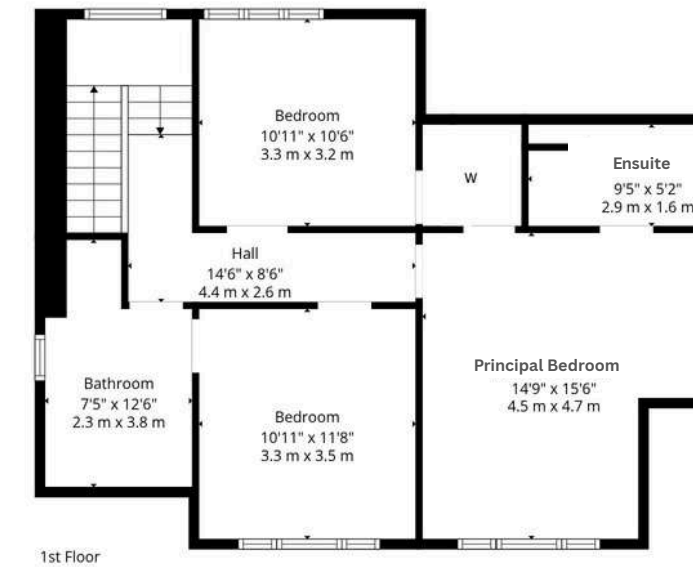
Floor Plan

Ground Floor

- Living Room: 27'2" x 27'1" (8.3m x 8.3m)
- Dining Room: 18'1" x 17'4" (5.5m x 5.3m)
- Entrance Hall: 13'2" x 16'1" (4.0m x 4.9m)
- Kitchen: 18'0" x 12'11" (5.5m x 3.9m)
- Breakfast Nook: 16'2" x 10'5" (4.9m x 3.2m)
- WC: 8'2" x 5'11" (2.5m x 1.8m)
- Laundry: 8'4" x 9'7" (2.5m x 2.9m)
- Bathroom (Ground Floor): 5'2" x 9'7" (1.6m x 2.9m)

First Floor

- Master Bedroom: 14'9" x 15'6" (4.5m x 4.7m)
- Ensuite: 9'5" x 5'2" (2.9m x 1.6m)
- Bedroom: 10'11" x 11'8" (3.3m x 3.5m)
- Bedroom: 10'11" x 10'6" (3.3m x 3.2m)
- Hall: 14'6" x 8'6" (4.4m x 2.6m)
- Bathroom: 7'5" x 12'6" (2.3m x 3.8m)





Ford House enjoys an enviable position in the heart of South Ayrshire, set within some of Scotland's most celebrated countryside yet within easy reach of a wealth of everyday amenities and attractions.

The nearby town of Maybole offers everyday conveniences including local shops and schooling, whilst the larger town of Ayr, just a short drive north, provides a comprehensive range of retail, dining and leisure. The surrounding area is rich in natural beauty and history, with the magnificent Culzean Castle and Country Park - with which Ford House shares its own historic connection - just a short distance away. Golf enthusiasts will also find themselves well placed, with Trump Turnberry, Royal Troon and Prestwick Golf Club all within easy reach.

For commuters, the A77 provides a direct route to Ayr and onward to Glasgow in around an hour, whilst Maybole railway station offers regular services to Ayr with onward connections to Glasgow Central, making Ford House a genuine option for those seeking rural life without sacrificing city access.



corum

Corum Ayr

01292 880888

ayr@corumproperty.co.uk

10 Beresford Terrace, Ayr KA7 2EG