



Teale Street, E2

£2,600 Per calendar month

A well presented and finished two double bedroom apartment in Cheverell House. This property comes with two equally sized bedrooms, wood floors and a separate kitchen.

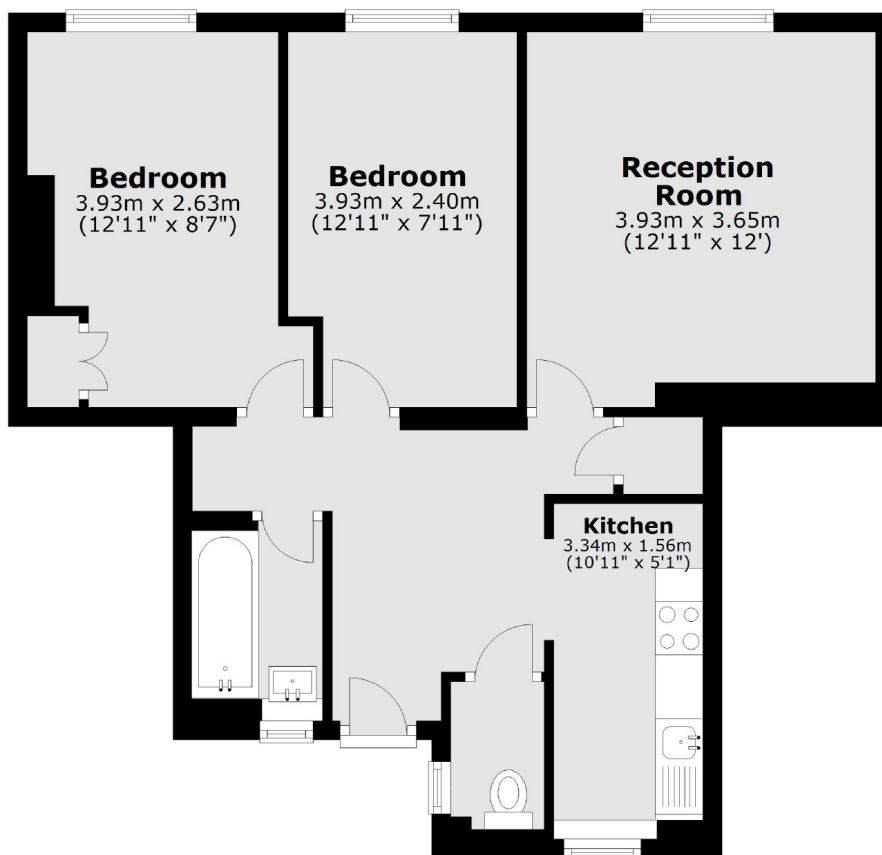
Located just of Broadway Market for all local shops, bars and restaurants.

Features

- Two Double Bedrooms
- One Bathroom
- Refurbished Throughout
- Separate Kitchen
- Wood Floors
- Modern Finish

Teale Street,
London, E2

First Floor



Total area: approx. 55.8 sq. metres (600.1 sq. feet)