



Lauderdale Mansions

Lauderdale Road, W9

Asking Price £350,000

A lovely one-bedroom apartment which is situated on the top floor of this impressive mansion block. The property comprises; bright reception room, double bedroom and a separate kitchen.

This apartment, spanning approximately 375 square feet, further benefits; period features, large windows offering an abundance of natural light and access to communal gardens.

Lauderdale Road is ideally situated moments from Maida Vale underground station and close to all the amenities of Maida Vale and Little Venice.

CHESTERTONS



Lauderdale Mansions

Lauderdale Road, W9

- A charming one-bedroom apartment positioned on the top floor of this ever popular mansion block.
- Benefitting from a share in the freehold and exceptionally long underlying lease.
- Views over and access to communal gardens.
- Spanning approximately 375 square feet with abundant natural light.



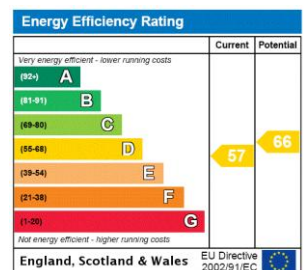
Tenure: Share of Freehold 949 years 7 months

Service Charge: £3,257.12 pa

Ground Rent: Peppercorn

Local Authority: City Of Westminster

Council Tax Band: B



Chestertons Little Venice Sales

26 Clifton Road

Maida Vale

London

W9 1SX

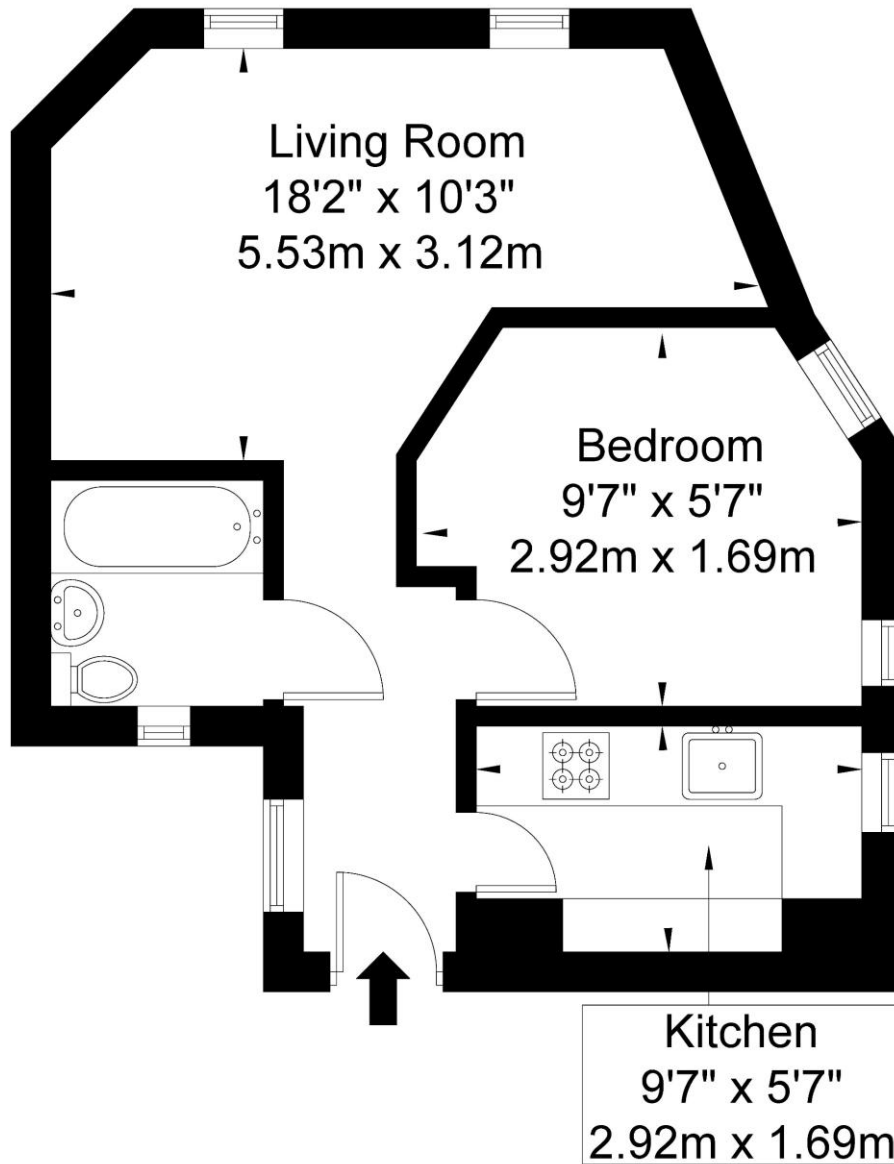
littlevenice@chestertons.co.uk

020 7286 4632

chestertons.co.uk

Lauderdale Mansions Lauderdale Road W9 1NG

Approx Gross Internal Area = 35.1 sq m / 377 sq ft



Fourth Floor

Ref

Copyright **BLEU
PLAN**

The Floor plan is not to scale and measurements and areas shown are approximate and therefore should be used for illustrative purposes only. The plan has been prepared in accordance with the RICS code of Measuring Practice and whilst we have confidence in the information produced it must not be relied on. If there is any aspect of particular importance, you should carry out or commission your own inspection of the property.

Copyright @ BLEUPLAN

