



THE STORY OF  
**Sandalwood House**  
*Salhouse, Norfolk*

**SOWERBYS**



THE STORY OF

# Sandalwood House

Salhouse, Norfolk  
NR13 6RW

---

Architect-Designed Mid-Century  
Modern Residence

Commissioned for Former Anglia  
News Anchor John Bacon

Private Shared Driveway Serving  
Just Three Homes

Expansive Open-Plan Living and Dining Space

Striking Glass-Panelled Central Staircase

Five Bedrooms and Flexible Ground Floor Study

Recently Refurbished Bathrooms and En Suite

Air Conditioning Installed Throughout

Mature Private Gardens Designed for Entertaining

Located Within a Norfolk Broads  
Conservation Village

---

**SOWERBYS NORWICH OFFICE**

01603 761441

[norwich@sowerbys.com](mailto:norwich@sowerbys.com)





Commissioned and built in 1969 for legendary former Anglia News anchor John Bacon, this striking architect-designed residence is an exceptional example of late mid-century modern design. Defined by clean lines, expansive glazing and a seamless connection between inside and out, the house captures the optimism and spatial drama of Californian modernism - a style rarely encountered in Norfolk.

Set back from the road along a private driveway serving just three properties, the house enjoys both privacy and presence within one of the Norfolk Broads' most admired conservation villages. Opportunities to acquire homes of this architectural integrity in such a setting are exceptionally rare.

Beyond the front gate, an enclosed courtyard creates an immediate sense of arrival. The light-filled entrance hall reveals the home's defining qualities of sanctuary and space, while a sculptural glass-panned staircase rises through the centre of the house, setting the architectural tone from the outset.

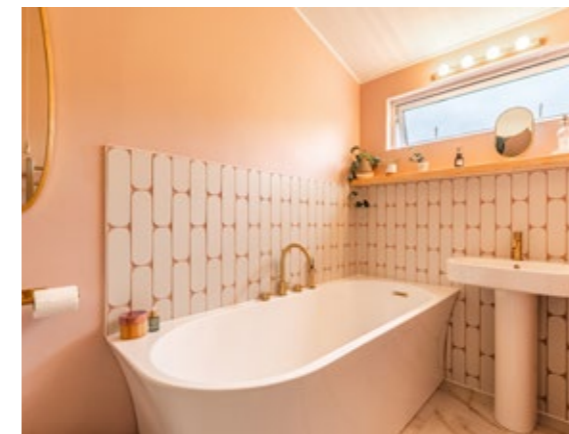
The reception rooms are generous and beautifully proportioned. A stylish den with sleek integrated storage overlooks the established front garden, while the principal living and dining space stretches from the front courtyard through to the rear garden, allowing natural light to move effortlessly throughout the day - a hallmark of thoughtful modernist design.

The kitchen combines contemporary practicality with understated style, featuring a Britannia range, integrated appliances and excellent storage. A separate utility and pantry add further functionality, while a private study or sixth bedroom offers flexibility for home working or guests.



From the dramatic glazing to the seamless connection with the gardens, this is a house that feels every bit as striking today as it would have in 1969.





The current owners have carried out a series of carefully considered improvements, including the refurbishment of the family bathroom, en suite and cloakroom, introducing modern comfort while remaining sympathetic to the home's architectural character.

Upstairs, a dramatic landing with impressive ceiling height is framed by a large picture window overlooking the mature front garden, where laburnum, lilac, pear, beech and cherry trees provide seasonal colour and privacy.

The principal suite is filled with natural light from an entire wall of glazing and includes a dedicated dressing room. The recently refurbished en suite features a floor-to-ceiling window overlooking the secluded rear garden - an unexpectedly luxurious design detail. Four further bedrooms and a beautifully appointed family bathroom complete the first floor, providing generous and versatile accommodation.

Recently installed air conditioning ensures comfortable year-round climate control - a rare addition in homes of this era.

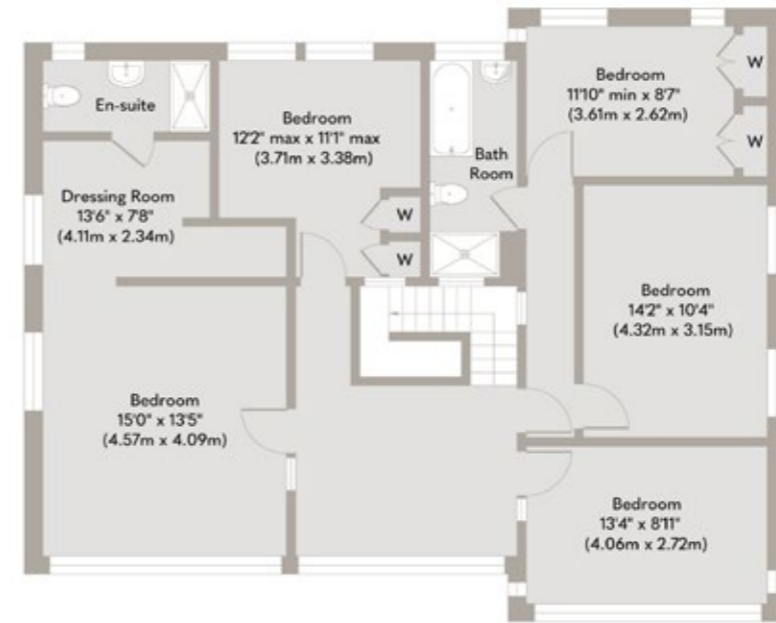




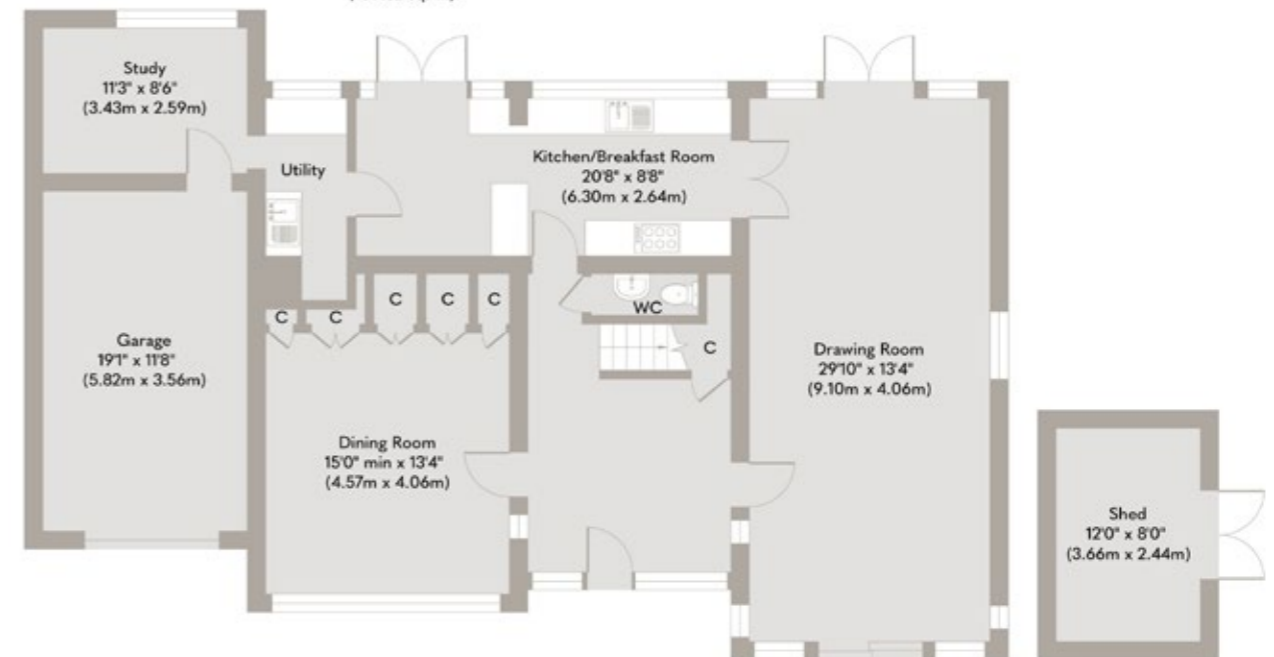
Outside, the enclosed rear garden has been designed for both privacy and entertaining, with mature planting, sculptural form and multiple seating areas enhancing the connection between architecture and landscape.

A rare opportunity to acquire a home of provenance, architectural distinction and enduring design within an exceptional Norfolk Broads conservation setting.





First Floor  
Approximate Floor Area  
1177 sq. ft  
(109.32 sq. m)



Ground Floor  
Approximate Floor Area  
1231 sq. ft  
(114.40 sq. m)

Outbuilding 1  
Approximate Floor Area  
96 sq. ft  
(8.91 sq. m)

Whilst every attempt has been made to ensure the accuracy of the floor plan contained here, measurements of doors, windows, rooms and any other items are approximate and no responsibility is taken for any error, omission, or mis-statement. This plan is for illustrative purposes only and should be used as such by any prospective purchaser or tenant. The services, systems and appliances shown have not been tested and no guarantee as to their operability or efficiency can be given.

Copyright V360 Ltd 2025 | www.houseviz.com

# Salhouse

## WATERSIDE LIVING IN THE HEART OF THE NORFOLK BROADS

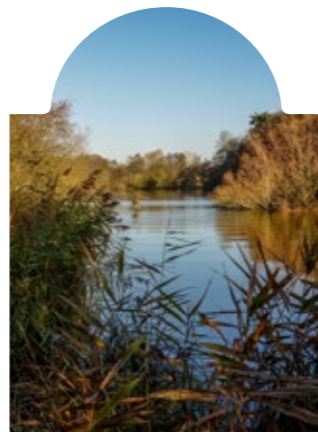
Salhouse is a highly regarded Norfolk Broads village, offering an exceptional balance of countryside tranquillity, waterside living, and convenient access to Norwich. Surrounded by open landscapes and positioned within the Broads National Park, the village is particularly popular with those seeking a relaxed lifestyle connected to nature and the outdoors.

At the heart of the village is Salhouse Broad, one of the most picturesque broadland destinations in Norfolk. With woodland walks, open water, canoe and paddleboard hire, and access to the wider network of Broads waterways, it provides year-round enjoyment for residents and visitors alike. The surrounding area also offers scenic cycling routes, nature trails, and abundant wildlife, making Salhouse especially appealing to walkers, boaters, and nature lovers.

The village itself benefits from a strong community atmosphere alongside a range of everyday amenities. Salhouse has a primary school, village hall, church, recreational facilities, and railway station with direct links to Norwich and the North Norfolk coast via the Bittern Line. Popular local destinations include The Stag pub, Salhouse Farm Shop & Café, and nearby eateries around Wroxham and Hoveton, all contributing to the area's welcoming and sociable feel.

Property in Salhouse ranges from traditional cottages and period homes to modern detached houses and contemporary waterside residences. Many homes enjoy generous plots, countryside views, or easy access to the water.

Combining beautiful broadland scenery with excellent connectivity and village charm, Salhouse remains one of the most desirable locations within the Norfolk Broads, perfectly suited to both permanent living and weekend retreat lifestyles.



### Note from Sowerbys



“The current owners have carefully enhanced the property while remaining respectful of its mid-century character and integrity.”



### SERVICES CONNECTED

Mains water, gas, electricity and drainage.

### COUNCIL TAX

Band E.

### ENERGY EFFICIENCY RATING

To be confirmed.

To retrieve the Energy Performance Certificate for this property please visit <https://find-energy-certificate.digital.communities.gov.uk/find-a-certificate/search-by-reference-number> and enter in the reference number above. Alternatively, the full certificate can be obtained through Sowerbys.

### TENURE

Freehold.

### LOCATION

What3words: ///oven.reassured.imposes

These particulars and measurements whilst believed to be accurate, are set out as a general outline only for guidance and do not constitute any part of an offer or contract. Intending purchasers should not rely on them as statements of representation of fact, but must satisfy themselves by inspection or otherwise as to their accuracy. No person in this firm's employment has the authority to make or give representation or warranty in respect of the property.

# SOWERBYS

Sowerbys Estate Agents Limited is a company registered  
in England and Wales, company no: 05668606.  
Registered office 23 Tuesday Market Place, King's Lynn, England, PE30 1JJ

