



Hilary Mews, SE1

£1,700,000

A very rarely available four storey, freehold town house, built in 2021, with a large eat in kitchen on the ground floor, a full width living room on the first floor, three generous double bedrooms, two bathrooms and an additional WC, plus air-conditioning on every floor, a stunning private roof terrace with far reaching skyline views.

Enviably located in the heart of SE1, moments from Borough and London Bridge stations, this property is surrounded by the energy of Borough Market and the cultural allure of the South Bank. Riverside cafés, independent galleries, and acclaimed restaurants create a vibrant neighbourhood atmosphere.

Features

- Freehold Townhouse
- Full Air-Conditioning
- Three Bedrooms
- 24 Hour Concierge
- Secure Gated Entry
- High Spec Finish
- Private Roof Terrace
- Fantastic Skyline Views



Hilary Mews, SE1

The main living space occupies the full width of the house with large floor to ceiling windows and a dual aspect. On the ground floor is a fully integrated kitchen with a breakfast bar, ample room for dining and a separate WC.

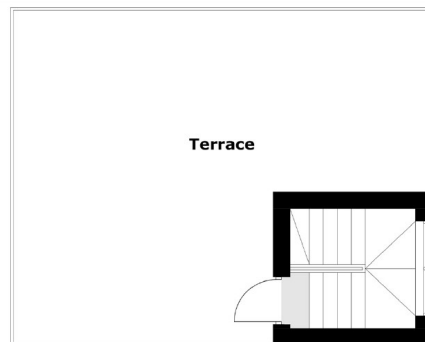
The master bedroom boasts a large en-suite bathroom and a luxurious walk-in wardrobe. The second and third bedrooms are also large doubles with built-in wardrobes and are served by a three piece family bathroom.

The house has been finished to a very high standard with high quality integrated appliances, under floor heating and attractive contemporary design. There is a fantastic sense of space from top to bottom, from the kitchen through to the roof terrace.

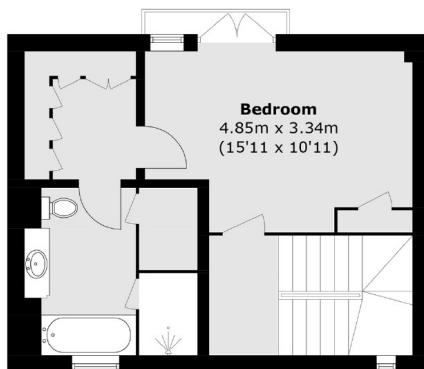
Brandon House/Hilary Mews is one of SE1's premier gated developments, with a very exclusive feel and a high quality finish. Benefits include a 24 hour concierge, cycle storage, secure entry and lift access.



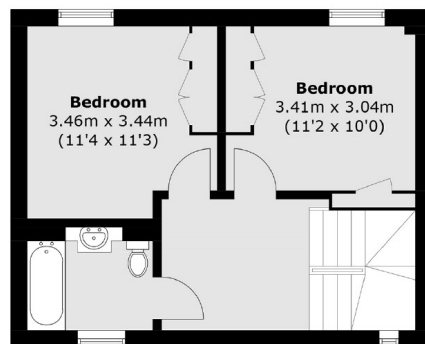
Hilary Mews, London, SE1



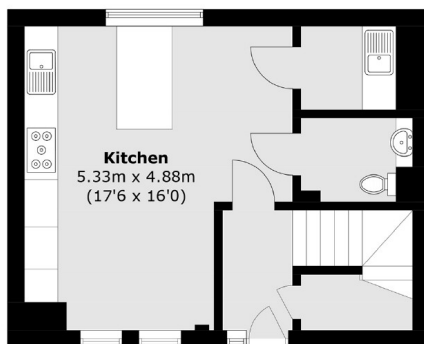
Fourth Floor



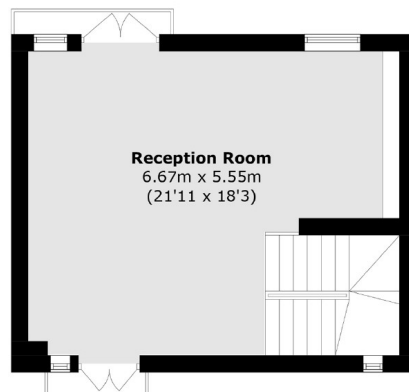
Second Floor



Third Floor



Ground Floor



First Floor

Total area (approx.): 155.1 sq. m (1,669.3 sq. ft)
Terrace area (approx.): 36.8 sq. m (396.1 sq. ft)