



ST GEORGES DRIVE, SW1V

£807 per week

Two Bedrooms
Two Bathrooms
Private Entrance
Situated In The Grid
Large Reception Room
EPC Rating - C

@marshandparsons
marshandparsons.co.uk

MARSH &
PARSONS



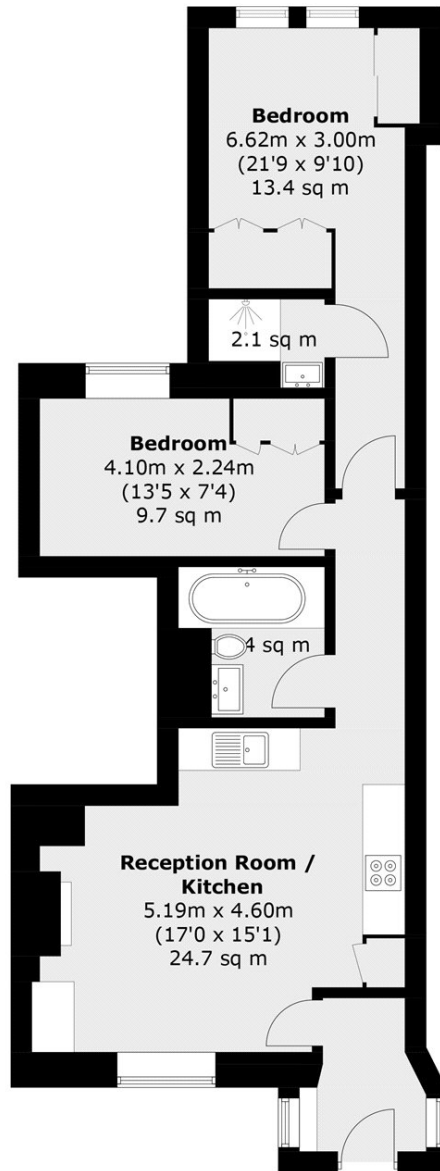
ABOUT THE PROPERTY

Boasting its own entrance and presented in immaculate condition throughout, this stunning property comprises two large double bedrooms with built-in storage, the master bedroom has a contemporary en suite bathroom and the property also has a further family bathroom and a large open-plan well equipped kitchen/living room. The property further benefits from an abundance of natural light and high ceilings throughout.

St Georges Drive is ideally located in the heart of Pimlico, a short walk to Pimlico Tube (Victoria line) and Victoria station (District, Circle and National Rail). The property is also within close proximity of the boutiques and eateries of Elizabeth Street and Sloane Square as well



STEP INSIDE ST GEORGES DRIVE



Ground Floor

Total area (approx.): 59.1 sq. m (636.1 sq. ft)

Pimlico & Westminster
020 7828 8100

Energy Rating: C We aim to make our particulars both accurate and reliable. However, they are not guaranteed; nor do they form part of an offer or contract. If you require clarification on any points then please contact us, especially if you're traveling some distance to view. Please note that appliances and heating systems have not been tested and therefore no warranties can be given as to their good working order

**MARSH &
PARSONS**