



Vanessa Newman
Property Agents

Tel: 01480 260 944

27a New Street, St. Neots,
Cambridgeshire, PE19 1AE

info@vnpa.uk



DEVON DRIVE, BIGGLESWADE, SG18 0FJ

GUIDE PRICE £685,000

An Exceptional 'Loveswater' Residence — Maythorns, Biggleswade

Open Day - Saturday 25th April 2026 - 10am til 2pm

LIMITED SLOTS AVAILABLE

This property is expected to generate strong interest.

Secure your viewing early to avoid disappointment.

Call: 01480 260 944 / email: Colin.Chapman@vanessanewmanpropertyagents.co.uk

A rare and distinguished opportunity to acquire one of just four individually designed 'Loveswater' homes, expertly crafted by David Wilson Homes. Positioned within the highly sought-after Maythorns development, this outstanding five double bedroom detached residence offers an impressive blend of scale, flexibility, and refined modern living.

Designed with both elegance and practicality in mind, the property delivers beautifully adaptable accommodation across a generous footprint. A spacious reception hall sets the tone, leading to a selection of versatile living spaces including the main living room with views of and access to the rear garden and its newly installed modern log burner, dedicated study, and an additional formal dining room. This space could easily be utilised for other purposes – perfect for evolving family needs.

At the heart of the property lies a superb open-plan L-shaped kitchen and dining area, ideal for both everyday living and entertaining, complemented by a separate utility room and separate ground floor cloakroom.

Upstairs, five beautifully proportioned double bedrooms provide exceptionally sized accommodation, including a large principal suite complete with dressing room and en-suite shower room. The second bedroom (often described as the guest suite) also offers luxurious bedroom space coupled with a second en-suite shower room, while a stylish family bathroom serves the remaining rooms.

Externally, the property is equally impressive, boasting professionally landscaped front and rear gardens along with the significant advantage of private off-road parking for two vehicles, secluded at the rear of the property, with access to a similarly private double garage, providing ample storage space and additional parking for cars and motorbikes.

Upgrades include a brand new Worcester Bosch Greenstar 8000 30kW boiler. Professionally redecorated prior to coming to the market for sale. Landscaped rear garden. Electronic roller shutter garage door.

Location

Situated within the established and highly desirable Maythorns development, the property enjoys a prime position within walking distance of a range of local amenities, including Edward Peake CoFe VC Middle School (approximately 0.1 miles), Lawnside Academy, and The Kings Reach public house. The town centre and mainline railway station are also easily accessible, offering convenient connections for commuters alongside a wide selection of shops, leisure facilities, and services.







Vendor Statement

We didn't just find a house here – we found our home. Over the past 11 years, it has been the heart of our family life, a place where we've grown together and created so many cherished memories.

The kitchen has always been at the centre of it all – from busy mornings to relaxed family dinners – with the garden becoming a natural extension of that space in the warmer months.

The living room, especially with the log burner glowing, has been the space where we've all slowed down, relaxed, and truly enjoyed family time together.

The study has played an important role in our lives, providing the space to work from home and build our business.

Meanwhile, the dining room has evolved alongside our family – once a playroom filled with toys and laughter, now a games room where we've shared countless fun moments as the children have grown.

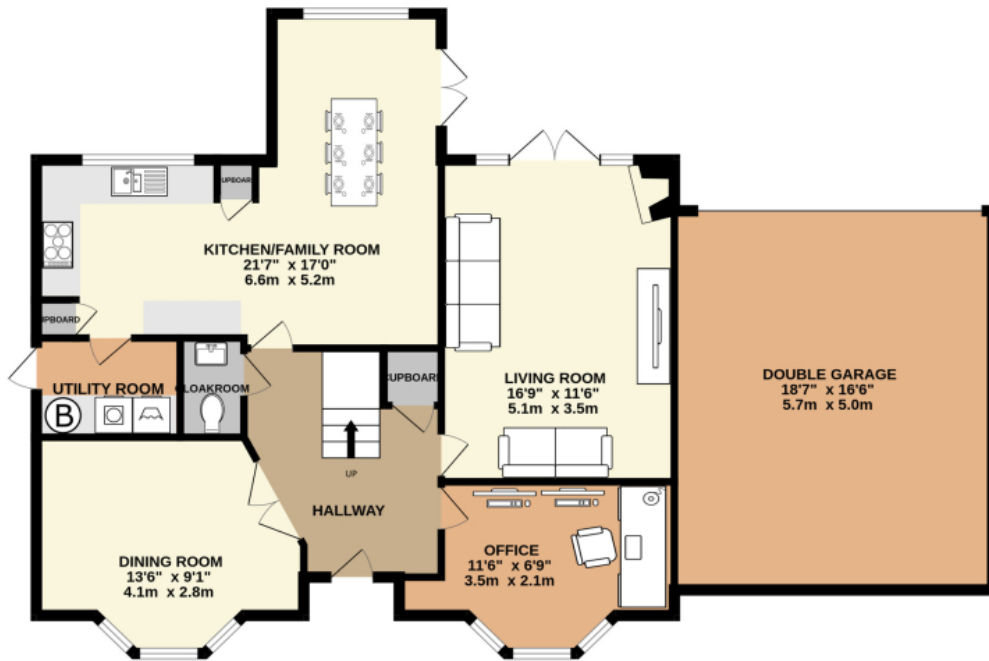
This has been a wonderful home that offered us space, comfort, and a real sense of togetherness. Leaving is going to be incredibly difficult, but we hope the next family will love it just as much and create their own special memories here.

Internal viewing is essential to fully appreciate the rarity, the scale, and the quality of this exceptional home.

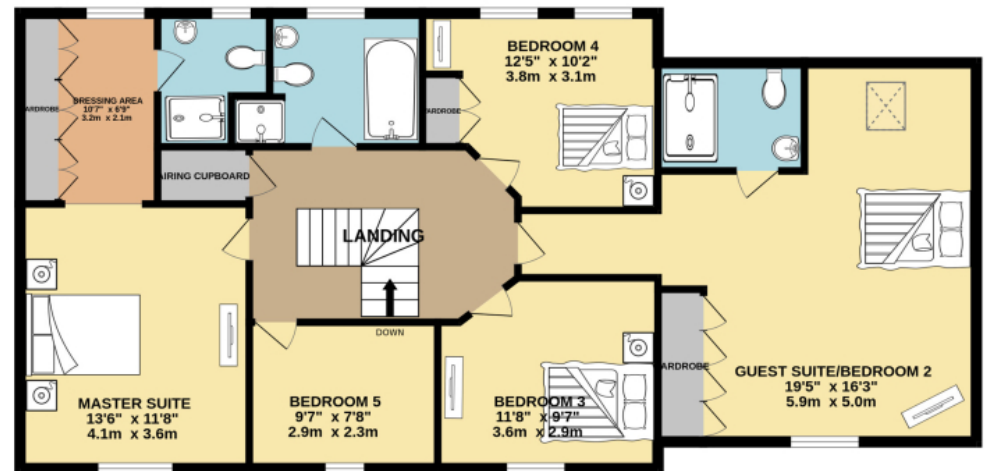




GROUND FLOOR
1165 sq.ft. (108.2 sq.m.) approx.



1ST FLOOR
1092 sq.ft. (101.5 sq.m.) approx.



TOTAL FLOOR AREA : 2257 sq.ft. (209.7 sq.m.) approx.

Whilst every attempt has been made to ensure the accuracy of the floorplan contained here, measurements of doors, windows, rooms and any other items are approximate and no responsibility is taken for any error, omission or mis-statement. This plan is for illustrative purposes only and should be used as such by any prospective purchaser. The services, systems and appliances shown have not been tested and no guarantee as to their operability or efficiency can be given.

Made with Metropix ©2026

