



22 Jireh Court, Perrymount Road, Haywards Heath, West Sussex, RH16 3BH

£1,450 Per Calendar Month

This spacious, light & airy first floor flat WITH A GARAGE is in a prime location for the station. and town centre. Offered unfurnished and available from the 30th Jnauary 2026.

The Apartment

THREE bedroom first floor apartment extending to approximately 850 sq ft with its own garage and situated within just five minutes walk of Haywards Heath Station. This is one of the largest apartments within the development and offers most spacious and stylishly presented accommodation comprising: - larger-than-average central hallway, impressive 22ft4 dual aspect sitting/dining with south facing balcony and distant views to the north, stylish refitted kitchen with a range of high gloss units, sleek refitted bathroom, separate WC and three double bedrooms - all with fitted wardrobes/cupboards.

Further attributes include uPVC double glazing, gas fired central heating with combination boiler AND GARAGE.

Outside is residents/visitors parking and a garage in nearby block.

Location

Jireh Court is a purpose built block of flats situated on Perrymount Road, within a short walk of mainline train station with its fast & regular commuter services to London (approx 47 mins to Victoria/London Bridge), Brighton and Gatwick International Airport. Haywards Heath town centre with its extensive range of cafés, bars, restaurants and shops is also nearby. By car, surrounding areas can be easily accessed via the A23(M).

Information

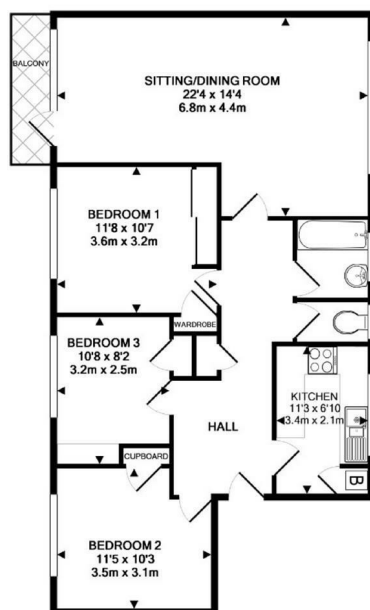
Council Tax Band: C £2,094.28 for 2025/26 (for a guide only. Please contact Local Authority for exact figure)

Permitted Payments:

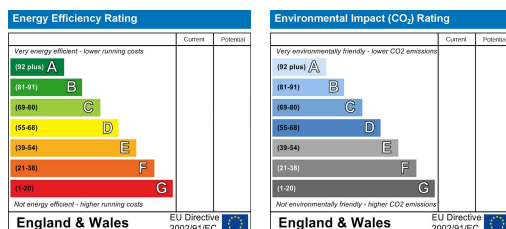
Holding Fee: One weeks rent - £334.61

Deposit: Five weeks rent - £1673.07

The holding deposit will be refunded against the first month's rent but can be retained if the applicant withdraws from the property, fails the reference checks due to false or misleading information or fails the Right to Rent checks.



TOTAL APPROX. FLOOR AREA 849 SQ.FT. (78.9 SQ.M.)
Plans for illustration purposes only. Intending purchasers should check measurements personally.
Made with Metropix 12014.



PSPhomes

VIEWING BY APPOINTMENT WITH PSP HOMES

54 Church Road, Burgess Hill, West Sussex, RH15 9AE. TELEPHONE 01444 250999

OPEN SEVEN DAYS A WEEK www.psphomes.co.uk

Much care is taken in the preparation of our particulars, but we cannot guarantee the information given is accurate.
Property details are issued a general guide only and may not form any part of an offer or contract. We recommend intending purchasers check details personally.