



2 Bed
Flat
located
on Rangemoor, Cove

£875 Per Month



 UP Estates

PROPERTY SUMMARY

Available Early August | Spacious Two Double Bedroom Flat with Parking and Communal Gardens

This well-presented two-bedroom second-floor flat offers spacious and comfortable accommodation, ideal for professionals, couples or a small family.

The property comprises two generous double bedrooms, a bright and welcoming living room, a separate fitted kitchen, and a family bathroom. Offered unfurnished, the flat provides a blank canvas for tenants to make it their own home.

Externally, the property benefits from off-road parking, a useful private storage shed, and attractive communal gardens surrounding the development, providing a pleasant and well-maintained outdoor environment.

Located on Rangemoor, the property enjoys excellent access to a range of local amenities including supermarkets, shops, schools and healthcare facilities. The nearby A46, A45 and M6 motorway network provide convenient transport links, while Coventry city centre, University Hospital Coventry & Warwickshire, and Warwickshire Retail Park are all within easy reach. There are also regular public transport services connecting the area to the city centre and surrounding districts. Call now to view!



2



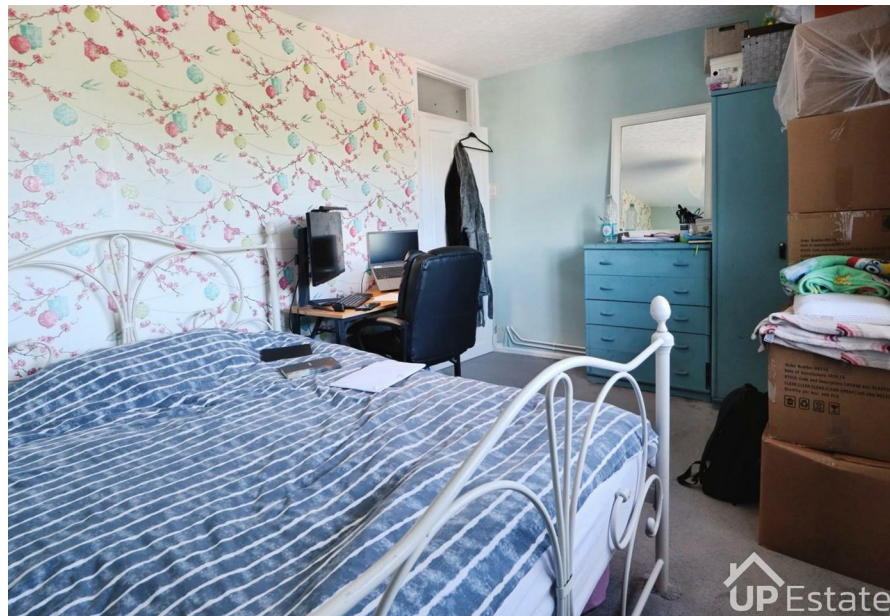
1



1



B



Property Address:
Rangemoor,
Coventry,
CV3 3FY

CONTACT

Up Estates
6 Orchard Court
Binley Business Park
Coventry
Warwickshire
CV3 2TQ

E: lettings@upestates.co.uk
T: 024 7771 0780
www.upestates.co.uk