



Key Features

- ◆ One bedroom, ground-floor apartment
- ◆ Located in a beautifully converted hall
- ◆ Close to seafront, shops and amenities
- ◆ Refurbished to a high standard
- ◆ Private Courtyard Garden
- ◆ EPC rating C



Beamsley Road, Redoubt, Eastbourne

£900 PCM



Northwood are delighted to welcome to market this spacious, ground-floor, one-bedroom apartment in a converted community hall in the Redoubt area of Eastbourne.

Accommodation comprises bright open-plan living room/kitchen/diner, double-bedroom with built-in wardrobes, and modern white-suite bathroom with shower over bath.

Further benefits include double-glazing, generous storage cupboard, free on street parking and private rear courtyard garden.

Located just off Eastbourne's fabulous Victorian seafront, minutes walk from the Napoleonic Redoubt fortress, seafront cafes as well as local shops and amenities this beautiful apartment is perfectly located to make the most of life on the Sunshine coast.





Please view our immersive virtual tour to fully appreciate this fantastic property:

<https://tour.giraffe360.com/6ec57f3010ab416a8035bc42677e2720>

Mobile Phone Coverage and Broadband speeds can be checked on the Ofcom website:

<https://checker.ofcom.org.uk/>

Council Tax Band A: £1770

Holding Deposit: £207.69 (one week's rent)

Full Deposit: £1038.46

1st month's rent + Full Deposit: £1938.46

Total household income must exceed £27,000.00 to be considered for this property.

The landlord manages this property directly.

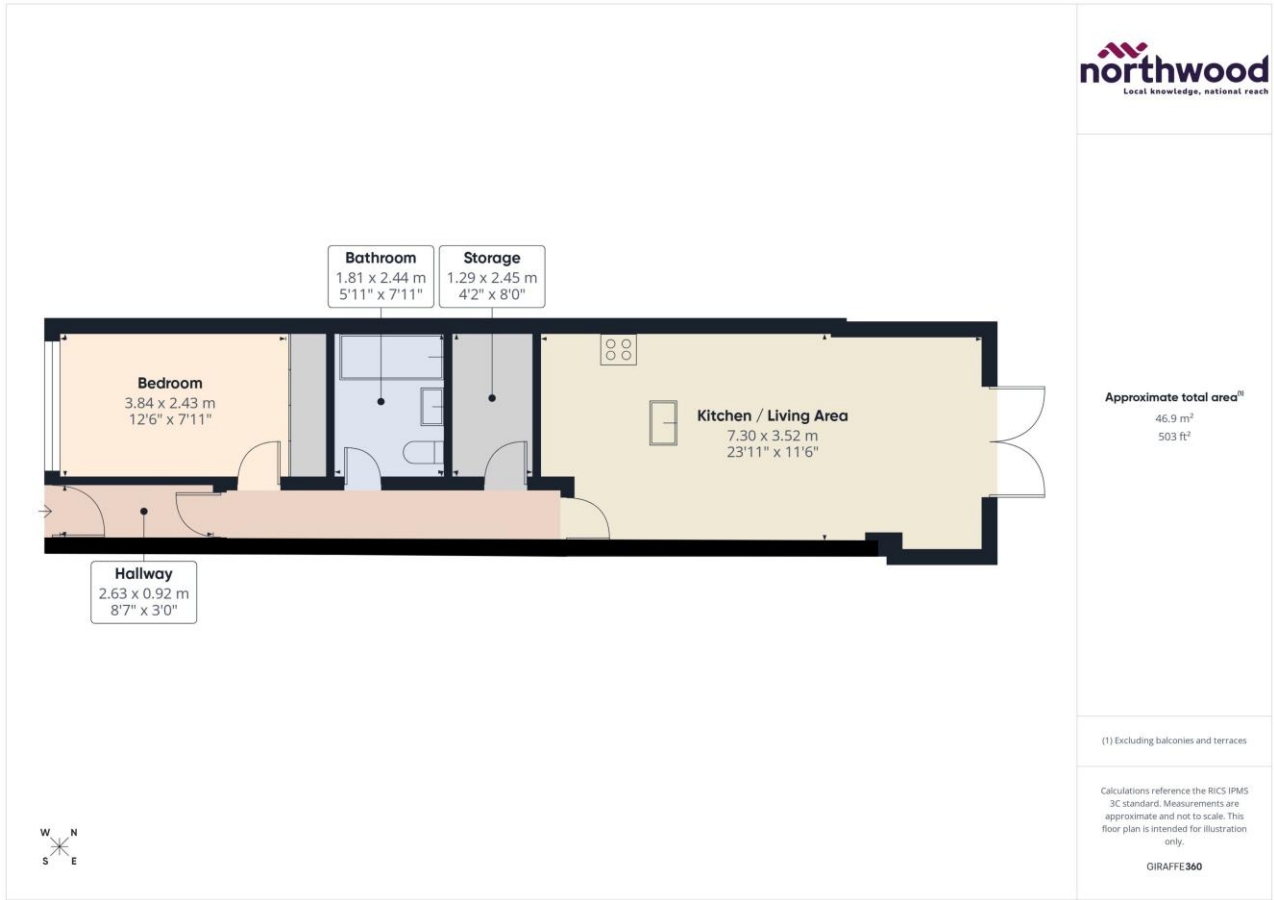






Imagery ©2023 Google, Data SIO, NOAA, U.S. Navy, NGA, GEBCO, Airbus, Lambert / Copernicus, Map data ©2023 20 m





Northwood
81-83 South Street
Eastbourne
BN21 4LR
01323 744544
eastbourne@northwooduk.com

