

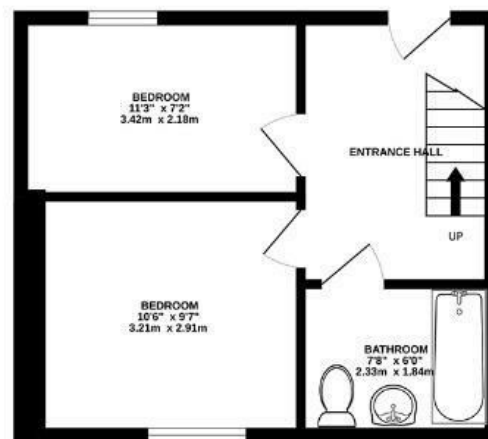
The Quadrant

LAWRENCE HILL

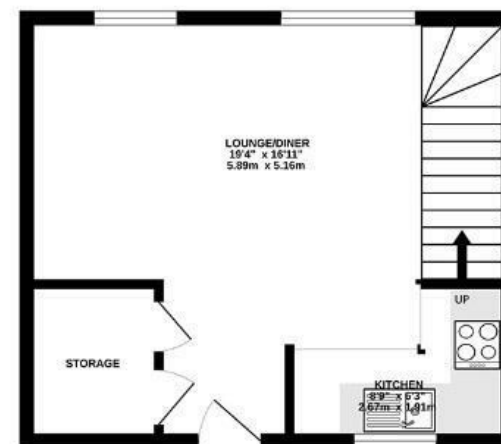
APPROXIMATE FLOOR AREA
59 SQM / 636 SQFT



GROUND FLOOR



FIRST FLOOR



Illustrations are for reference purposes only, measurements are approximate, not to scale.

Boardwalk

Barleyfields

, BRISTOL



£265,000



2 Bedrooms



BS2 0NA



1 Bathrooms

"I've loved living here for the last almost 5 years and will be sad to leave. It's so close to town but in the last few years the local area has really developed. We're big fans of a pint in The Barley Mow or a Mokoko almond croissant on a Saturday morning! Having Temple Meads a couple of minutes away has been fantastic for both train links and the airport bus."

