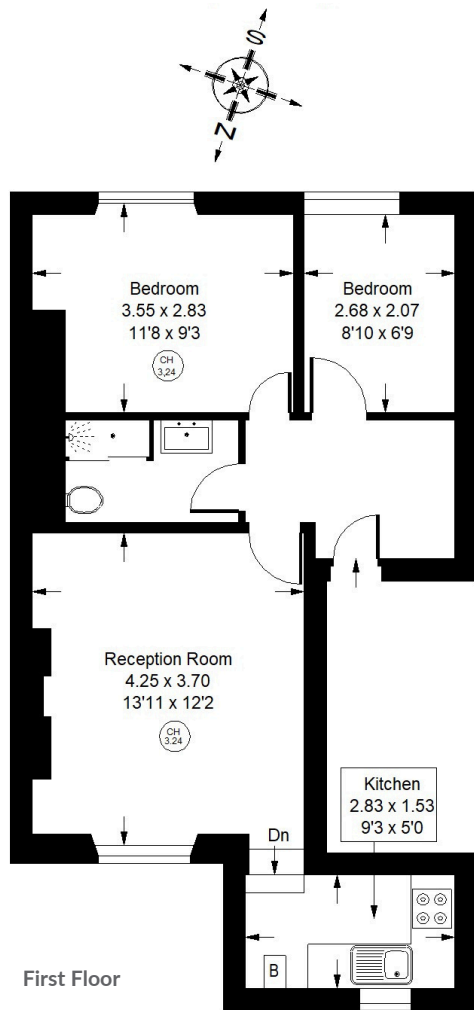


CAMBRIDGE GARDENS, W10



Approx. Gross Internal Area
= 48.1 sq m / 518 sq ft



Cambridge Gardens, W10 - Share of Freehold Local Authority - Royal Borough of Kensington & Chelsea

A bright first-floor flat set within an attractive period conversion. The property features a reception room with high ceilings and a feature fireplace, leading through to a modern fitted kitchen. There are two south-facing bedrooms, both filled with natural light, along with a contemporary shower room. Cambridge Gardens is a sought-after street in North Kensington, ideally located within easy reach of Portobello Road, Golborne Road, Notting Hill and Ladbroke Grove. Excellent transport links are also nearby, with the Hammersmith & City line accessible from Ladbroke Grove station.

- Two Bedrooms
- Modern Fitted Kitchen
- Sought-after Location
- High Ceilings
- EPC Rating = D
- Council Tax Band = D



Whilst every attempt has been made to ensure the accuracy of the floor plan, measurements are approximate and not to scale. No guarantee is given on the total square footage of the property quoted on the plan. Figures given are for guidance. Plan is for illustration purposes only, not to be used for valuations.