



**Suffolk Street, SW1Y**

**£646** Per week

**Dexters**



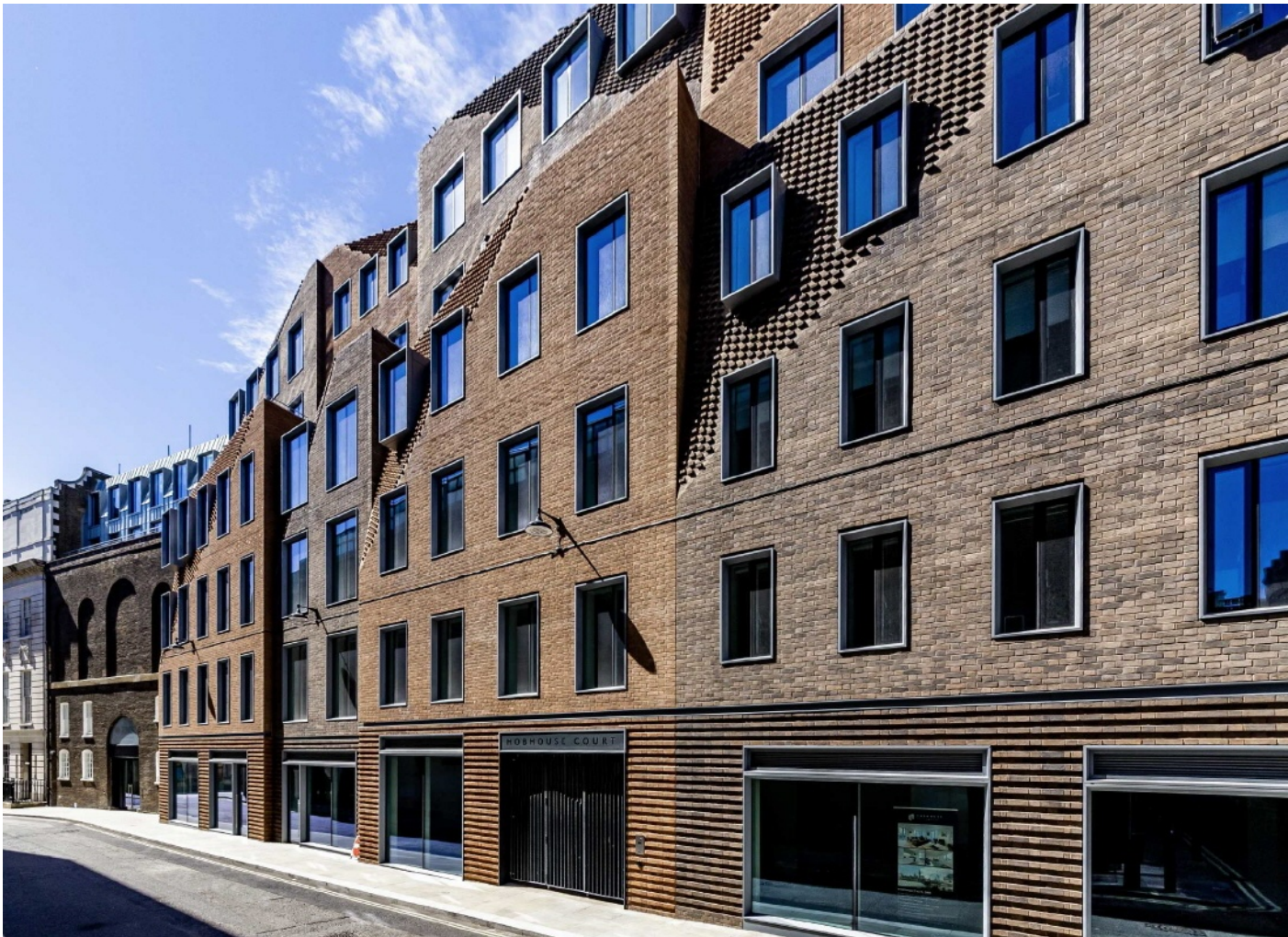
## Suffolk Street, SW1Y

A luxurious studio apartment on the first floor of the gated brand new Hobhouse Court development designed by Arquitectonica with on site porter, air conditioning, communal courtyard, separate storage units and bicycle storage in an unrivalled prestigious location.

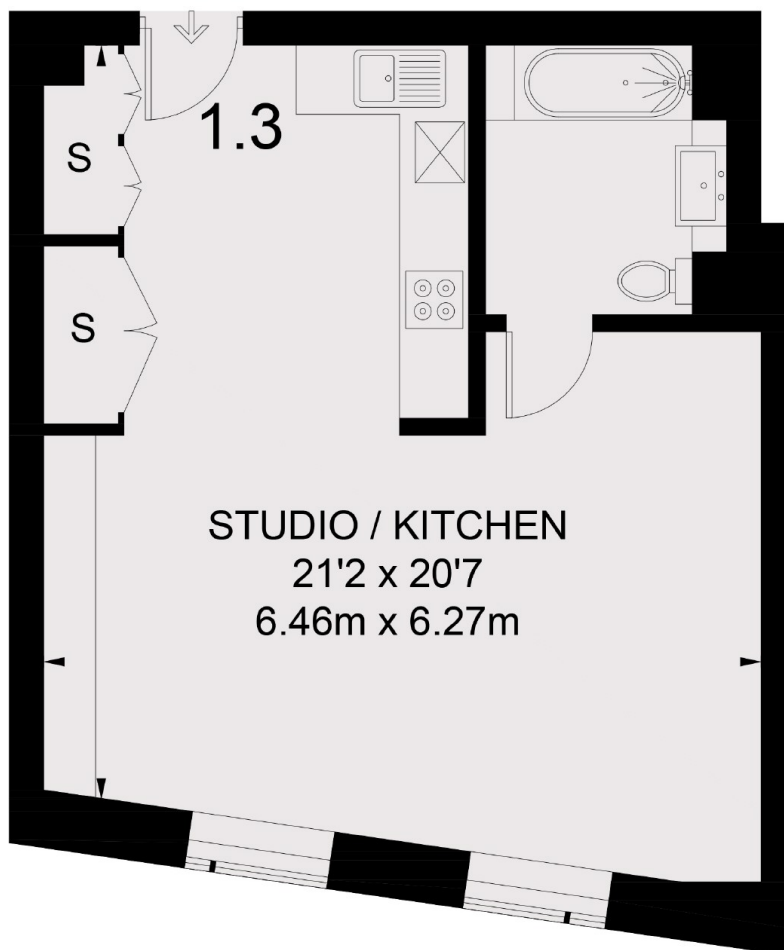
Hobhouse is located less than 50 meters from Trafalgar Square between St James's, Mayfair, Soho, Covent Garden, Leicester Square and St James's Park nearby to Leicester Square Station as well as Piccadilly Circus and Charing Cross Station.

### Features

- Hobhouse Development
- Wooden Floors
- On Site Concierge
- Comfort Cooling
- Bicycle Storage
- Studio Flat



**Suffolk Street,  
London, SW1Y**



## FIRST FLOOR

TOTAL APPROX. FLOOR AREA 461 SQ. FT. (42.8 SQ. M.)

**Dexters**

Fitzrovia & Covent Garden  
66 Goodge Street  
London  
W1T 4NG  
Lettings  
020 7067 2402

Energy Rating: B. We aim to make our particulars both accurate and reliable. However they are not guaranteed; nor do they form part of an offer or contract. If you require clarification on any points then please contact us, especially if you're traveling some distance to view. Please note that appliances and heating systems have not been tested and therefore no warranties can be given as to their good working order.

 **RICS** | Regulated  
Estate Agent  
and Letting Agent

[dexters.co.uk](http://dexters.co.uk)