



CHIPSTEAD STREET

London SW6



## CHIPSTEAD STREET LONDON SW6

An incredible five bedroom Lion house with an enviable west facing garden situated on the highly sought after Peterborough Estate.

			EPC
5	5	2	C

Local Authority: London Borough of Hammersmith and Fulham

Council Tax band: H

Tenure: Freehold

Guide price: £4,250,000



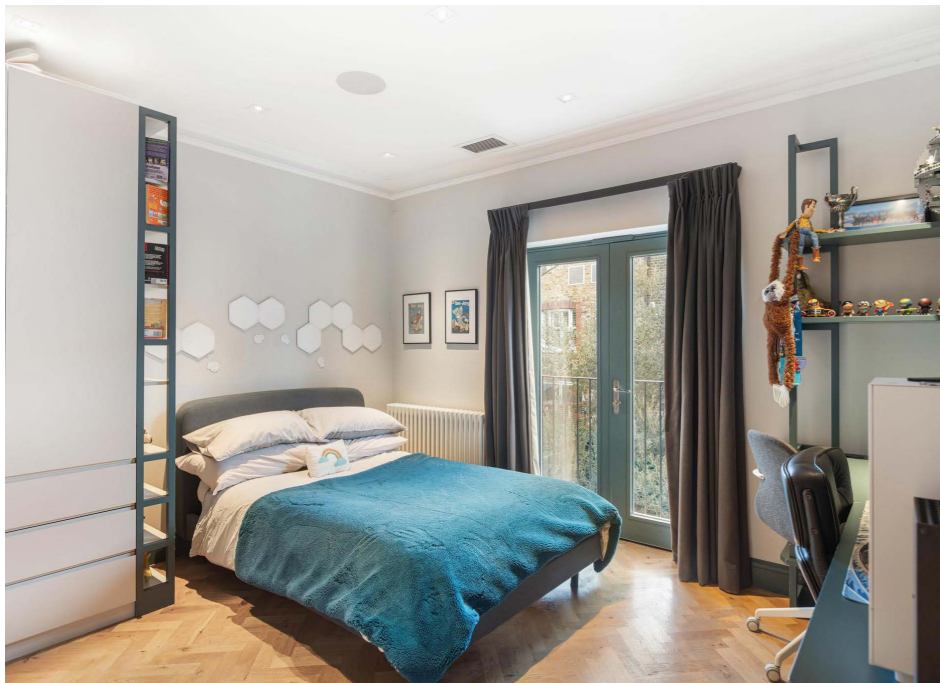
## HIGHLY SOUGHT AFTER PETERBOROUGH ESTATE

The property is situated on Chipstead Street, close to the vibrant selection of shops, cafés, and restaurants in the sought-after Parsons Green area. Residents benefit from a variety of green spaces, including Parsons Green, Eel Brook Common, South Park, and Hurlingham Park.

The neighbourhood offers an excellent choice of schools, such as Thomas' Fulham, Parsons Green Prep, Fulham Prep, and Lady Margaret School, as well as bilingual options including L'Ecole Marie d'Orliac and the Fulham Bilingual School. Local nurseries include Pippa Pop-Ins and L'Ecole des Petits.

Transport connections are convenient, with Parsons Green Underground Station (District Line) just 0.5 miles away, and numerous bus routes providing direct links to Chelsea, Putney and central.





## IMPRESSIVE BLEND OF SPACE LIGHT AND STYLE

Thoughtfully redesigned with modern family living and entertaining in mind, this home offers an impressive blend of space, light and style.

The ground floor features a generous double reception room and a striking open plan kitchen/dining room, with full-width doors opening onto the sunny west-facing garden. The kitchen is bathed in natural light from overhead skylights and fitted with contemporary cabinetry, a central island, and Gaggenau appliances. A guest WC completes this floor.

Additional living space can be found on the lower ground floor, which includes a substantial media room, a double bedroom with en suite bathroom, a separate utility room and Guest WC. This level also benefits from its own street entrance, making it ideal for guests, extended family, or a live-in nanny.

All timings and distances mentioned are approximates.





## PRINCIPAL SUITE COMPLETE WITH A DRESSING ROOM

The first floor hosts the principal suite, complete with a dressing room and en suite, as well as a second double bedroom with en suite and a dedicated home office.

The top floor offers two further double bedrooms, each with its own en suite; one also has convenient access to generous eaves storage





(Including Eaves Storage)  
Approximate Gross Internal Area = 370.03 sq m / 3,983 sq ft

This plan is for layout guidance only. Not drawn to scale unless stated. Windows and door openings are approximate. Whilst every care is taken in the preparation of this plan, please check all dimensions, shapes and compass bearings before making any decisions reliant upon them. (ID767266)



Arabella Howard-Evans  
+44 20 7751 2402  
arabella.howardevans@knightfrank.com

**Knight Frank Fulham**  
203 New Kings Road  
Fulham SW6 4SR

[knightfrank.co.uk](https://www.knightfrank.co.uk)

Your partners in property

1. Particulars: These particulars are not an offer or contract, nor part of one. You should not rely on statements given by Knight Frank in the particulars, by word of mouth or in writing ("information") as being factually accurate about the property, its condition or its value. Neither Knight Frank nor any joint agent has any authority to make any representations about the property, and accordingly any information given is entirely without responsibility on the part of Knight Frank. 2. Material Information: Please note that the material information is provided to Knight Frank by third parties and is provided here as a guide only. While Knight Frank has taken steps to verify this information, we advise you to confirm the details of any such material information prior to any offer being submitted. If we are informed of changes to this information by the seller or another third party, we will use reasonable endeavours to update this as soon as practical. 3. Photos, Videos etc: The photographs, property videos and virtual viewings etc. show only certain parts of the property as they appeared at the time they were taken. Areas, measurements and distances given are approximate only. 4. Regulations etc: Any reference to alterations, or use of, any part of the property does not mean that any necessary planning, building regulations or other consent has been obtained. A buyer must find out by inspection or in other ways that these matters have been properly dealt with and that all information is correct. 5. Fixtures and fittings: A list of the fitted carpets, curtains, light fittings and other items fixed to the property which are included in the sale (or may be available by separate negotiation) will be provided by the Seller's Solicitors. 6. VAT: The VAT position relating to the property may change without notice. 7. To find out how we process Personal Data, please refer to our Group Privacy Statement and other notices at <https://www.knightfrank.com/legals/privacy-statement>.

Particulars dated December 2025. Photographs and videos dated December 2025. All information is correct at the time of going to print. Knight Frank is the trading name of Knight Frank LLP. Knight Frank LLP is a limited liability partnership registered in England and Wales with registered number OC305934. Our registered office is at 55 Baker Street, London W1U 8AN. We use the term 'partner' to refer to a member of Knight Frank LLP, or an employee or consultant. A list of members names of Knight Frank LLP may be inspected at our registered office. If you do not want us to contact you further about our services then please contact us by either calling 020 3544 0692, email to [marketing.help@knightfrank.com](mailto:marketing.help@knightfrank.com) or post to our UK Residential Marketing Manager at our registered office (above) providing your name and address.

