



BROOMSLEIGH STREET

West Hampstead, NW6



A BEAUTIFULLY PRESENTED TERRACED HOUSE

A charming Victorian period home located in this quiet residential street in the heart of West Hampstead.



3



3



2

EPC

TBC

Local Authority: London Borough of Camden

Council Tax band: F

Tenure: Freehold

Asking Price: £1,550,000





This beautifully presented terraced house on Broomsleigh Street effortlessly combines timeless character with modern sophistication. Extending to approximately 1,526 sq ft, the property offers three generously sized bedrooms and three stylish bathrooms.

At the heart of the home are inviting reception rooms rich in charm, featuring distinctive details such as a contemporary fireplace surround, elegant cornicing, and wooden flooring, creating a warm and refined atmosphere ideal for both relaxation and entertaining.

A true highlight of the property is the thoughtfully designed kitchen, centred around a generous island with pendant lighting above and seating for three, creating an ideal space for both casual dining and entertaining.

This space flows seamlessly into the garden via bifolding doors, creating an exceptional indoor outdoor living experience. The low maintenance private garden features a raised deck to the rear, making it ideal for entertaining during the warmer months. Ambient lighting enhances the space, allowing you to enjoy the outdoor setting well into the evening.







The principal suite, positioned on the first floor, offers a peaceful sanctuary with a well considered layout that prioritises comfort and privacy. It benefits from beautifully recessed bespoke cabinetry and a pocket door leading to a luxurious en suite bathroom. Upon entering the Art Deco inspired en suite, you are welcomed by a spacious walk in shower, finished with a rainfall shower head and accented by the elegant wall lighting.

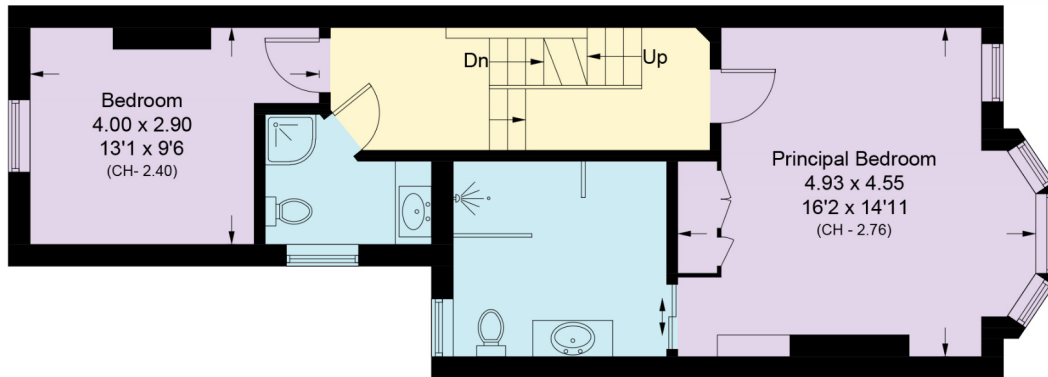
The remaining bedrooms are equally well proportioned, offering flexibility for family life, guest accommodation, or home working.

Practicality has been carefully considered throughout, with excellent bespoke storage solutions, plantation shutters and contemporary amenities seamlessly integrated into the design, perfectly suited to modern urban living.

Broomsleigh Street enjoys convenient access to the vibrant amenities of West Hampstead. Transport links are excellent, with West Hampstead Underground, Overground and Thameslink stations all within 0.5 mile.



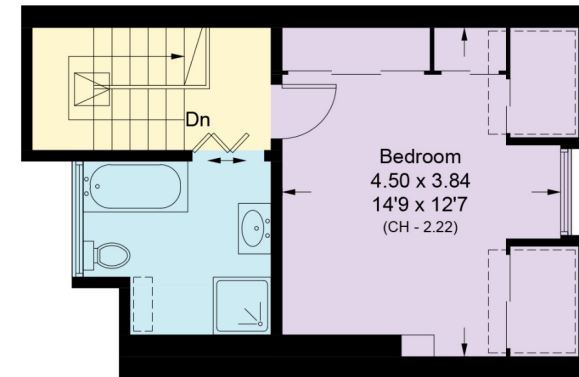




First Floor

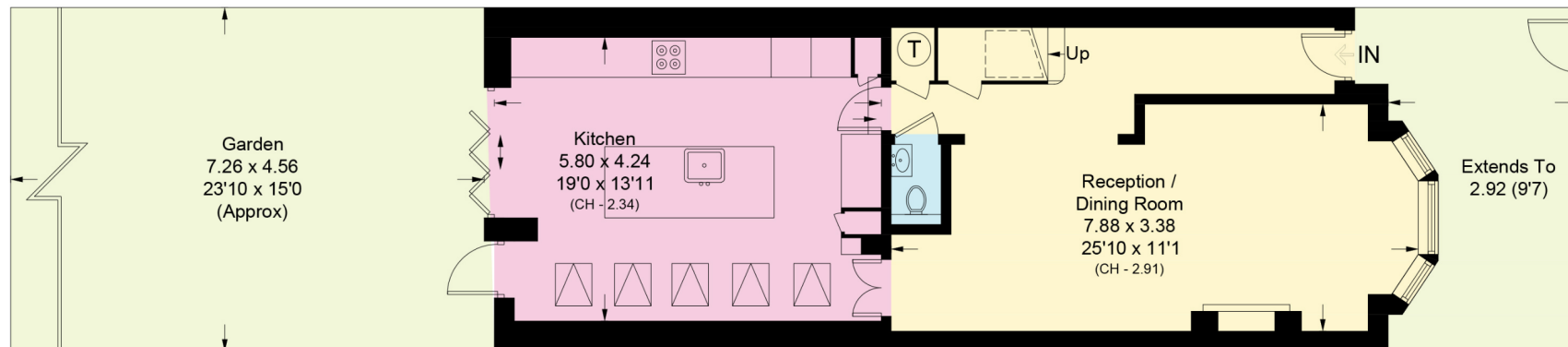
Approximate Area = 52.2 sq m / 562 sq ft

= Reduce head height below 1.5m



Second Floor

Approximate Area = 31.3 sq m / 337 sq ft
Including Limited Use Area (4.0 sq m / 43 sq ft)



Ground Floor

Approximate Area = 58.3 sq m / 627 sq ft
Including Limited Use Area (0.6 sq m / 6 sq ft)

Approximate Gross Internal Area = 141 sq m / 1,526 sq ft

This plan is for layout guidance only. Not drawn to scale unless stated. Windows and door openings are approximate. Whilst every care is taken in the preparation of this plan, please check all dimensions, shapes and compass bearings before making any decisions reliant upon them. (ID767266)

We would be delighted
to tell you more.

Nathan White
020 3833 9813
nathan.white@knightfrank.com

Knight Frank Hampstead
58-62 Heath Street, London,
NW3 1EN

[knightfrank.co.uk](https://www.knightfrank.co.uk)

Your partners in property

1. Particulars: These particulars are not an offer or contract, nor part of one. You should not rely on statements given by Knight Frank in the particulars, by word of mouth or in writing ("information") as being factually accurate about the property, its condition or its value. Neither Knight Frank nor any joint agent has any authority to make any representations about the property, and accordingly any information given is entirely without responsibility on the part of Knight Frank. 2. Material Information: Please note that the material information is provided to Knight Frank by third parties and is provided here as a guide only. While Knight Frank has taken steps to verify this information, we advise you to confirm the details of any such material information prior to any offer being submitted. If we are informed of changes to this information by the seller or another third party, we will use reasonable endeavours to update this as soon as practical. 3. Photos, Videos etc: The photographs, property videos and virtual viewings etc. show only certain parts of the property as they appeared at the time they were taken. Areas, measurements and distances given are approximate only. 4. Regulations etc: Any reference to alterations to, or use of, any part of the property does not mean that any necessary planning, building regulations or other consent has been obtained. A buyer must find out by inspection or in other ways that these matters have been properly dealt with and that all information is correct. 5. Fixtures and fittings: A list of the fitted carpets, curtains, light fittings and other items fixed to the property which are included in the sale (or may be available by separate negotiation) will be provided by the Seller's Solicitors. 6. VAT: The VAT position relating to the property may change without notice. 7. To find out how we process Personal Data, please refer to our Group Privacy Statement and other notices at <https://www.knightfrank.com/legals/privacy-statement>.

Particulars dated June 2026. Photographs and videos dated June 2026. All information is correct at the time of going to print. Knight Frank is the trading name of Knight Frank LLP. Knight Frank LLP is a limited liability partnership registered in England and Wales with registered number OC305934. Our registered office is at 55 Baker Street, London W1U 8AN. We use the term 'partner' to refer to a member of Knight Frank LLP, or an employee or consultant. A list of members names of Knight Frank LLP may be inspected at our registered office. If you do not want us to contact you further about our services then please contact us by either calling 020 3544 0692, email to marketing.help@knightfrank.com or post to our UK Residential Marketing Manager at our registered office (above) providing your name and address.