

Grove.

FIND YOUR HOME



36 Luanne Close
Cradley Heath,
West Midlands
B64 6SH

Asking Price £142,500



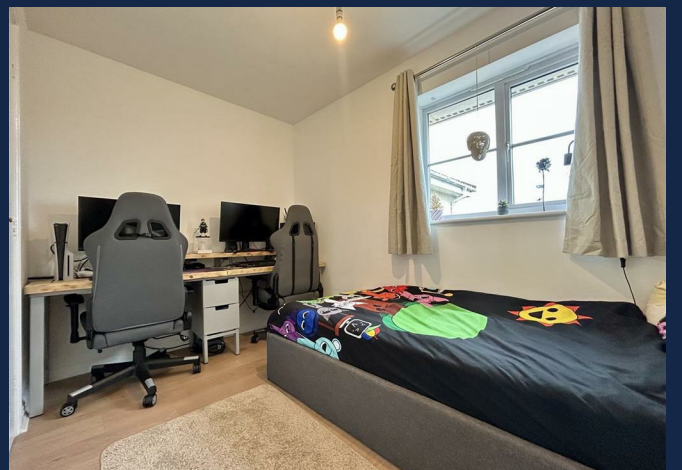
Situated on Luanne Close in the heart of Cradley Heath, this well presented top floor apartment enjoys attractive canal side views, offering two bedrooms and a modern, stylish interior.

Ideally located, the property provides easy access to a range of local amenities, including shops, schools, and parks, making it perfect for convenient everyday living. Cradley Heath is also well regarded for its strong community feel and excellent transport links, ensuring straightforward commutes to nearby towns and cities.

The property benefits from an allocated parking space, along with additional visitor parking. Internally, the apartment features an entrance hall with built-in storage, a bright lounge with canal views and access to a private balcony, and a fitted kitchen. There are two bedrooms, one of which also enjoys direct access to the balcony via sliding doors, along with a well-appointed family bathroom.

Offering comfortable, modern living in a desirable location, this apartment is ideal for first-time buyers, downsizers, or investors alike. Don't miss the opportunity to make this lovely home your own. JH
14/04/2026 V1 EPC=C







Approach

The property is approached via communal parking area which has one allocated space and visitor spaces.

Lounge 11'9" x 14'9" (3.6 x 4.5)

Double glazed window, central heating radiator, feature fireplace with surround, double glazed door to balcony.

Kitchen 9'10" x 6'2" (3.0 x 1.9)

Double glazed window, wall and base units with roll top surface over and splashback tiling to walls, oven, hob, extractor, space for washing machine, space for fridge freezer, sink with drainer and mixer tap.

Bedroom one 10'9" x 10'5" (3.3 x 3.2)

Double glazed sliding patio doors to balcony, double glazed window to side, central heating radiator.

Bedroom two 10'2" x 6'10" (3.1 x 2.1)

Double glazed window, central heating radiator, cupboard housing central heating boiler.

Bathroom

Double glazed obscured window, vertical central heating towel rail, pedestal wash hand basin with mixer tap, splashback tiling, low level flush w.c., bath with shower over having monsoon shower head.

Balcony

Has a slabbed patio overlooking the canal.



GROUND FLOOR



While every attempt has been made to ensure the accuracy of the floorplan contained here, measurements of doors, windows, rooms and any other items are approximate and no responsibility is taken for any error, omission or mis-statement. This plan is for illustrative purposes only and should be used in conjunction with any prospective purchase. The services, fixtures and appliances shown have not been tested and no guarantee can be made as to their condition or efficiency. All dimensions are in millimeters unless otherwise stated.

Tenure

Reference to the tenure of a property are based on information supplied by the seller. We are advised that the property is Leasehold, ground rent and other charges may be payable. A buyer is advised to obtain verification from their solicitor. The length of lease is 155 years from 31st October 2003. The ground rent and service charge per annum is £1,379.24. There is also a reserve fund for communal repairs.

Council Tax Banding

Tax Band is B

Money Laundering Regulations

In order to comply with Money Laundering Regulations, from June 2017, all prospective purchasers are required to provide the following - 1. Satisfactory photographic identification. 2. Proof of address/residency. 3. Verification of the source of purchase funds. All prospective purchasers will be required to undergo Anti-Money Laundering (AML) checks in accordance with current legislation. This may involve providing identification and financial information. It is our company policy to do digital enhanced checks through a third party and a fee will be payable for these checks." We will not be able to progress you offer until these checks have been carried out.

Referral Fees

We can confirm that if we are sourcing a quotation or quotations on your behalf relevant to the costs that you are likely to incur for the professional handling of the conveyancing process. You should be aware that we could receive a maximum referral fee of approximately £175 should you decide to proceed with the engagement of the solicitor in question. We are informed that solicitors are happy to pay this referral fee to ourselves as your agent as it significantly reduces the marketing costs that they have to allocate to sourcing new business. The referral fee is NOT added to the conveyancing charges that would ordinarily be quoted.

We can also confirm that if we have provided your details to Infinity Financial Advice who we are confident are well placed to provide you with the very best possible advice relevant to your borrowing requirements. You should be aware that we receive a referral fee from Infinity for recommending their services. The charges that you will incur with them

and all the products that they introduce to you will in no way be affected by this referral fee. On average the referral fees that we have received recently are £218 per case.

The same also applies if we have introduced you to the services of our panel of surveyors who we are confident will provide you with a first class service relevant to your property needs. We will again receive a referral fee equivalent to 10% of the fee that you pay capped at £200.00 This referral fee does not impact the actual fee that you would pay had you approached any of the panel of surveyors directly as it is paid to us as an intermediary on the basis that we save them significant marketing expenditure in so doing. If you have any queries regarding the above, please feel free to contact us.

IMPORTANT NOTICE 1. No description or information given whether or not these particulars and whether written or verbal (information) about the property or its value may be relied upon as a statement or representation of fact. Grove Properties Group do not have any authority to make representation and accordingly any information is entirely without responsibility on the part of Grove Properties Group or the seller. 2. The photographs (and artists impression) show only certain parts of the property at the time they were taken. Any areas, measurements or distance given are approximate only and interior measurements are wall to wall. 3. Any reference to alterations to, or use of any part of the property is not a statement that any necessary planning, building regulations or other consent has been obtained. 4. No statement is made about the condition of any service or equipment.