



*Jordan fishwick*

Rosey Bank Buxworth High Peak



## Rosey Bank Buxworth High Peak SK23 7NR

Offers Over £350,000



### The Property

Situated in an enviable semi-rural position with fabulous open rear views, a superbly presented, stone-built, mid terraced home. Spacious accommodation with beautiful enclosed tiered gardens and driveway parking. Pvc double glazing, gas central heating and comprising: entrance hall, rear porch, 17ft living room with wood burning stove, 17ft re-fitted dining kitchen, three generous bedrooms and a bathroom with a re-fitted contemporary white suite. Within reach of great primary schools, the popular Bugsworth Basin and sought after Chinley Village with it's excellent railway links, shops and pubs. Viewing highly recommended.




- Superbly Presented
- Fantastic Rear Views
- Three Proper Bedrooms
- 17FT Living Room and Dining Kitchen
- Tiered Gardens and Off Road Parking
- Sought After Location
- Semi-Rural Position
- Within 1/2 a mile of Chinley Railway Station

**Postcode** SK23 7NR

**EPC Rating**

**Local Authority** High Peak

**Council Tax** B

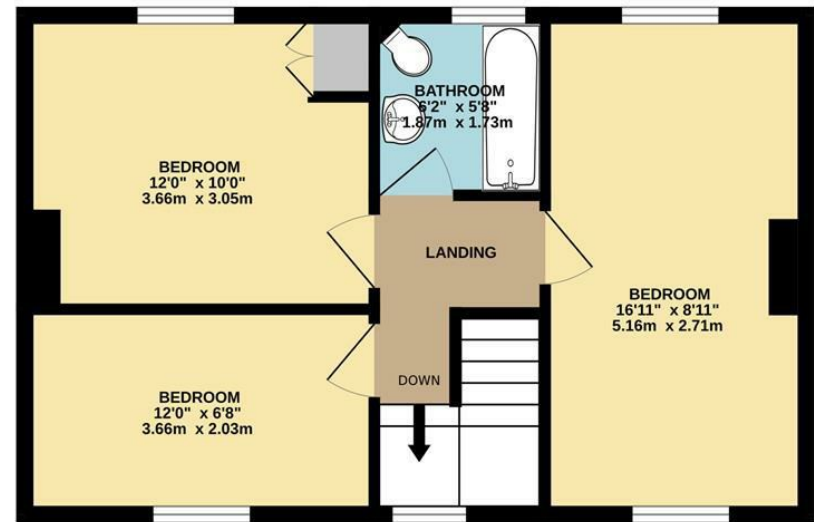
Energy Efficiency Rating		Current	Potential
Very energy efficient - lower running costs			
(92 plus)	A		
(81-91)	B		
(69-80)	C		
(55-68)	D		
(39-54)	E		
(21-38)	F		
(1-20)	G		
Not energy efficient - higher running costs			
<b>England &amp; Wales</b>		EU Directive 2002/91/EC 	



GROUND FLOOR  
446 sq.ft. (41.5 sq.m.) approx.



1ST FLOOR  
443 sq.ft. (41.2 sq.m.) approx.



TOTAL FLOOR AREA : 890 sq.ft. (82.7 sq.m.) approx.

Whilst every attempt has been made to ensure the accuracy of the floorplan contained here, measurements of doors, windows, rooms and any other items are approximate and no responsibility is taken for any error, omission or mis-statement. This plan is for illustrative purposes only and should be used as such by any prospective purchaser. The services, systems and appliances shown have not been tested and no guarantee as to their operability or efficiency can be given.  
Made with Metropix ©2025



These particulars are believed to be accurate but they are not guaranteed and do not form a contract. Neither Jordan Fishwick nor the vendor or lessor accept any responsibility in respect of these particulars, which are not intended to be statements or representations of fact and any intending purchaser or lessee must satisfy himself by inspection or otherwise as to the correctness of each of the statements contained in these particulars. Any floorplans on this brochure are for illustrative purposes only and are not necessarily to scale.

Offices at: Chorlton, Didsbury, Disley, Hale, Glossop, Macclesfield, Manchester Deansgate, Manchester Whitworth Street, New Mills, Sale, Wilmslow and Withington

14 Market St, Disley, Cheshire, Stockport SK12 2AA

01663 767878

disley@jordanfishwick.co.uk

www.jordanfishwick.co.uk