

THE PERFECT PROPERTY PLATFORM

Flat 1, Westminster Court Langdale Close, Cardiff

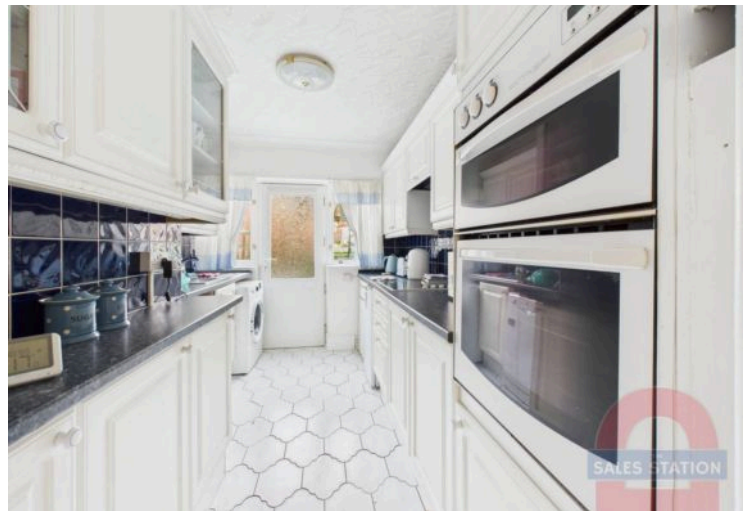
thesalesstation.co.uk

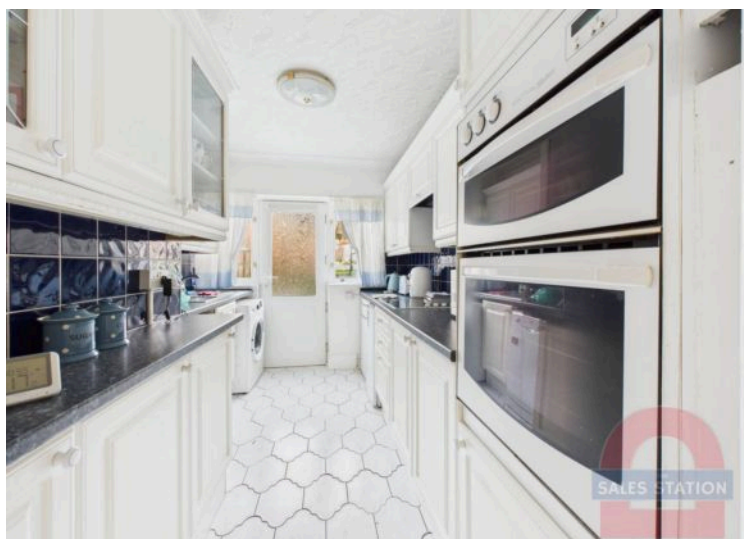




This lovely ground floor flat is situated in a highly popular location and offers comfortable, well-proportioned living space throughout.
Council Tax band: D

Tenure: Leasehold







REAR GARDEN



You can include any text here. The text can be modified upon generating your brochure.

WHAT ARE YOU WAITING FOR?

You can include any text here. The text can be modified upon generating your brochure.

BOOK A VIEWING

SCAN ME

