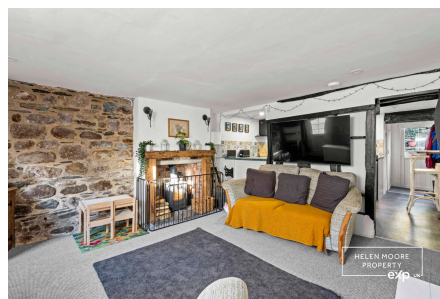


Totnes Road, South Brent, Devon

Offers Over £190,000

2 1 1



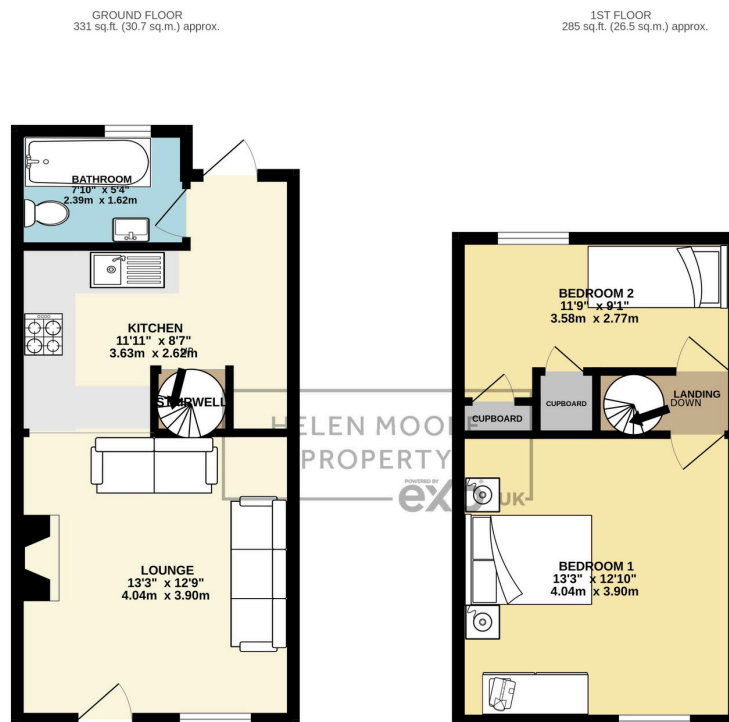
A charming period end-terrace cottage located in the heart of the popular South Brent village.

The property opens into a cosy lounge with inglenook fireplace and wood-burning stove, leading through to a fitted kitchen and recently installed bathroom. Upstairs are two bedrooms, comprising a generous double and a large single.

To the rear is access via a shared courtyard to a pretty garden with lawn, shrubs and a modern summer house. South Brent sits on the edge of Dartmoor, offering village amenities and excellent A38 links to Totnes, Plymouth and Exeter.

Key Features

- Period End-Terrace Cottage In Central South Brent
- Characterful Lounge With Inglenook Fireplace And Wood Burner
- Recently Installed Bathroom
- Generous Double Bedroom and Single Bedroom
- Edge Of Dartmoor Location With Excellent A38 Transport Links
- Popular Village Location Close To Local Amenities
- Fitted Kitchen
- Two First Floor Bedrooms
- Pretty Garden With Lawn, Shrubs And Summer House
- Gas Central Heating



TOTAL FLOOR AREA: 616 sq.ft. (57.3 sq.m.) approx.

Whilst every attempt has been made to ensure the accuracy of the floorplan contained herein, measurements of doors, windows, rooms and any other items are approximate and no responsibility is taken for any error, omission or mis-statement. This plan is for illustrative purposes only and should be used as such by any prospective purchaser. The services, systems and appliances shown have not been tested and no guarantee as to their operability or efficiency can be given.

Made with Metropix C5025