



Gladstone House, Horton Crescent

Epsom

£400,000



Gladstone House, Horton Crescent

Epsom, Epsom

- Two double bedrooms
- 914sqft
- First floor
- Sought-after Livingstone Park Development
- Surrounded by beautiful communal gardens
- Ensuite
- Ample storage
- Close proximity to Epsom Town Centre
- Two allocated parking spaces

Situated on the first floor within the highly sought-after Livingstone Park Development, this impressive two-bedroom apartment offers 914 square feet of well-proportioned living space. The property features two generously sized double bedrooms, including a principal suite with a modern ensuite shower room, providing both comfort and privacy. The spacious open-plan living and dining area is perfect for entertaining or relaxing, while the kitchen is well-equipped for every-day living. Ample storage solutions are thoughtfully integrated throughout the apartment, ensuring a clutter-free environment. Residents benefit from the convenience of two allocated parking spaces, a rare advantage in this popular location.



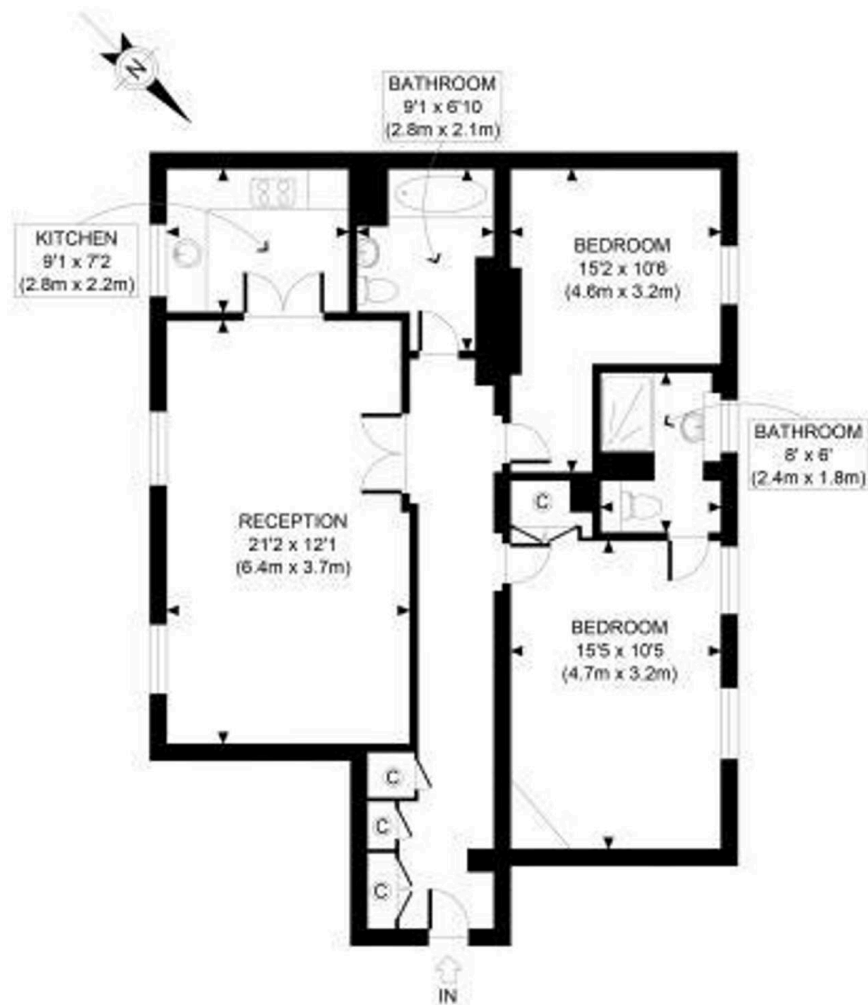
Situated on the first floor within the highly sought-after Livingstone Park Development, this impressive two-bedroom apartment offers 914 square feet of well-proportioned living space. The property features two generously sized double bedrooms, including a principal suite with a modern ensuite shower room, providing both comfort and privacy. The spacious open-plan living and dining area is perfect for entertaining or relaxing, while the kitchen is well-equipped for every-day living. Ample storage solutions are thoughtfully integrated throughout the apartment, ensuring a clutter-free environment. Residents benefit from the convenience of two allocated parking spaces, a rare advantage in this popular location. The development is ideally positioned within close proximity to Epsom Town Centre, offering easy access to a wide range of shops, restaurants, and transport links. This apartment presents an excellent opportunity for professionals, couples, or downsizers seeking a stylish and practical home in a desirable setting.

Council Tax band: TBD

Tenure: Leasehold







FIRST FLOOR
GROSS INTERNAL
FLOOR AREA 914 SQ FT

APPROX. GROSS INTERNAL FLOOR AREA 914 SQ FT / 85 SQM

Ref. Copyright **photoplan**

Disclaimer: Floor plan measurements are approximate and are for illustrative purposes only. While we do not doubt the floor plan accuracy and completeness, you or your advisors should conduct a careful, independent investigation of the property in respect of monetary valuation



Kaybridge Residential Estate Agents

Kaybridge Residential Estate Agents, 23 Stoneleigh Broadway - KT17 2JE

02080040474 • info@kbridge.co.uk • www.kaybridgeresidential.co.uk/

The information contained in this brochure is provided for general guidance and marketing purposes only. While every effort has been made to ensure the accuracy of the details provided, Kaybridge Residential cannot guarantee that all information is correct, complete, or up-to-date. Property Details: The descriptions, floor plans, dimensions, and photographs are intended to give a general overview of the property and may not represent its precise condition or layout. Prospective buyers are advised to