



Meadow View The Strand, Charlton

£550,000 Freehold

Spacious four-bed detached home in Charlton village. Modern, characterful, large garden, planning permission for extension, double garage, excellent schools, vibrant community, ready to move in.



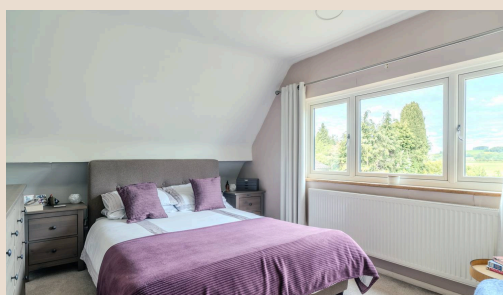
Charlton itself is a wonderfully vibrant community, complete with a beloved local pub, a thriving calendar of village fetes and community events, and excellent footpath connections to the neighbouring village of Hampton and the idyllic banks of the River Avon. A picturesque brook meanders through the very heart of the village, adding to its undeniable charm. Families will also appreciate the excellent local schooling on offer, with strong catchments for both primary and secondary education within easy reach.

Council Tax band: F

Tenure: Freehold



- Beautifully renovated four-bedroom detached home in the heart of the popular village of Charlton, Vale of Evesham
- Stunning bespoke kitchen with stone worktops, breakfast bar and garden outlook, complemented by a matching utility room
- Generous and flexible ground floor with three reception rooms, ground floor bedroom and shower room
- Exceptionally large rear garden with planning permission in place for a ground floor extension





Ground Floor
 Approximate Floor Area
 1203 sq. ft
 (111.83 sq. m)

First Floor
 Approximate Floor Area
 502 sq. ft
 (46.66 sq. m)

Approx. Gross Internal Floor Area 1705 sq. ft / 158.49 sq. m (Including Garage)
Approx. Gross Internal Floor Area 1502 sq. ft / 139.58 sq. m (Excluding Garage)

Illustration for identification purposes only, measurements are approximate, not to scale

Produced by Elements Property