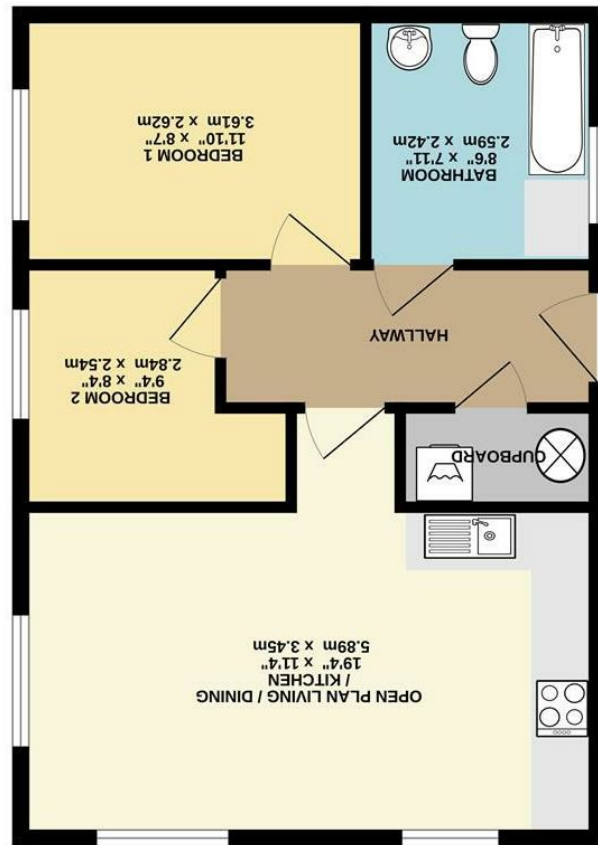




TOTAL FLOOR AREA: 560 sq.ft. (52.0 sq.m.) approx.
Measurements are approximate. Not to scale. Intended for illustrative purposes only.
Made with Metropix 5.0.2023



560 sq.ft. (52.0 sq.m.) approx.





Georgia Avenue, West Didsbury
M20 1LX

£215,000



The Property

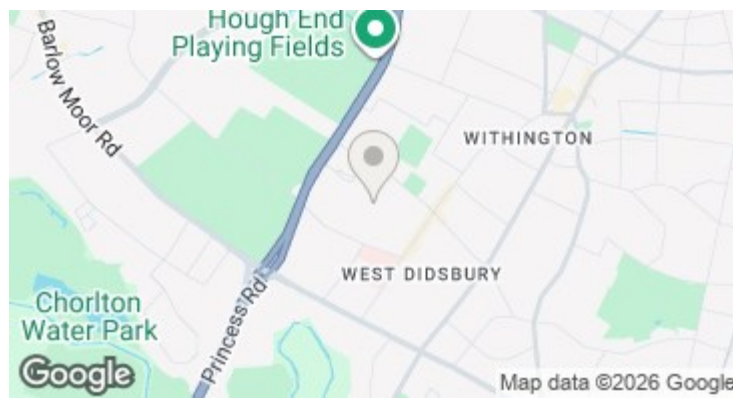
A STYLISH two bedroom apartment forming part of a popular development in WEST DIDSBUY, close to Burton Road & The Metrolink.

Enjoying double glazed windows and electric heating, the living space includes an open plan living/kitchen with a defined lounge area and fitted kitchen with a range of units and integrated appliances, a main bedroom with ample space for freestanding furniture, a further second bedroom and the generous bathroom, with white suite and tiled floors & walls. In addition, there is a generous hallway with useful utility cupboard. The flat is accessed from an elevated decked area and has its own allocated parking space.

The development itself is widely sought after for its proximity to the vibrant centre of West Didsbury and Burton Road's array of bars, restaurants and shops, and of course the Metrolink, with stops within close proximity.

Directions

M20 1LX



- Stylish apartment
- Second floor position
- Two bedrooms
- Open pan living/kitchen
- Generous tiled bathroom
- Double glazed windows
- Electric heating
- Allocated parking
- Great location in West Didsbury
- Close to Burton Road & the Metrolink

Postcode - M20 1LX

EPC Rating - C

Floor Area - 560.00 sq ft

Local Authority - Manchester City Council

Council Tax - C

