



Kiln Barn Road Ditton, Aylesford ME20 6AP

- Three-bedroom semi-detached family home, fully modernised by Millwood Homes.
- Southeast-facing, re-landscaped garden with patio, bar, and al fresco dining.
 - Large driveway and integral garage.
 - Master Bedroom With En-Suite
 - Guide Price £550,000 - £575,000
- Lounge and dining room with working log burners.
- Modern family bathroom with luxurious finish.
 - Orchard Views
 - Ready To View NOW !
- Highly desirable Kiln Barn, Ditton location with countryside walks, local schools, and easy access to Maidstone and London.

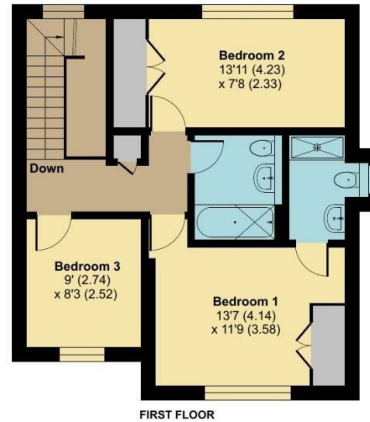
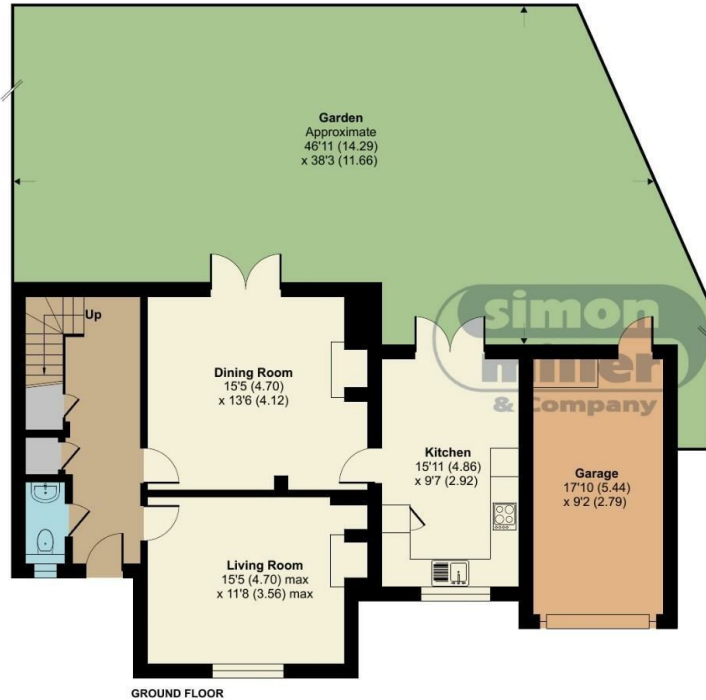
Price Guide £550,000 Freehold



Local Authority
Council Tax Band E
EPC Rating C

Pippin Cottage, Kiln Barn Road, Ditton, Aylesford, ME20

Approximate Area = 1268 sq ft / 117.8 sq m
Garage = 163 sq ft / 15.1 sq m
Total = 1431 sq ft / 132.9 sq m
For identification only - Not to scale



 Floor plan produced in accordance with RICS Property Measurement 2nd Edition, Incorporating International Property Measurement Standards (IPMS2 Residential). © n3cheom 2026. Produced for Simon Miller & Company. REF: 1438197



Malling Office
777 London Road, Larkfield, Aylesford,
Kent, ME20 6DE

Contact
01732 875706
larkfieldsales@simonmiller.co.uk
<https://simonmiller.co.uk/>

Agents Note: Whilst every care has been taken to prepare these particulars, they are for guidance purposes only. All measurements are approximate and for general guidance purposes only and whilst every care has been taken to ensure accuracy, they should not be relied upon and potential buyers/tenants are advised to recheck the measurements.