



Upper Berenger Walk, SW10

£2,350 Per week

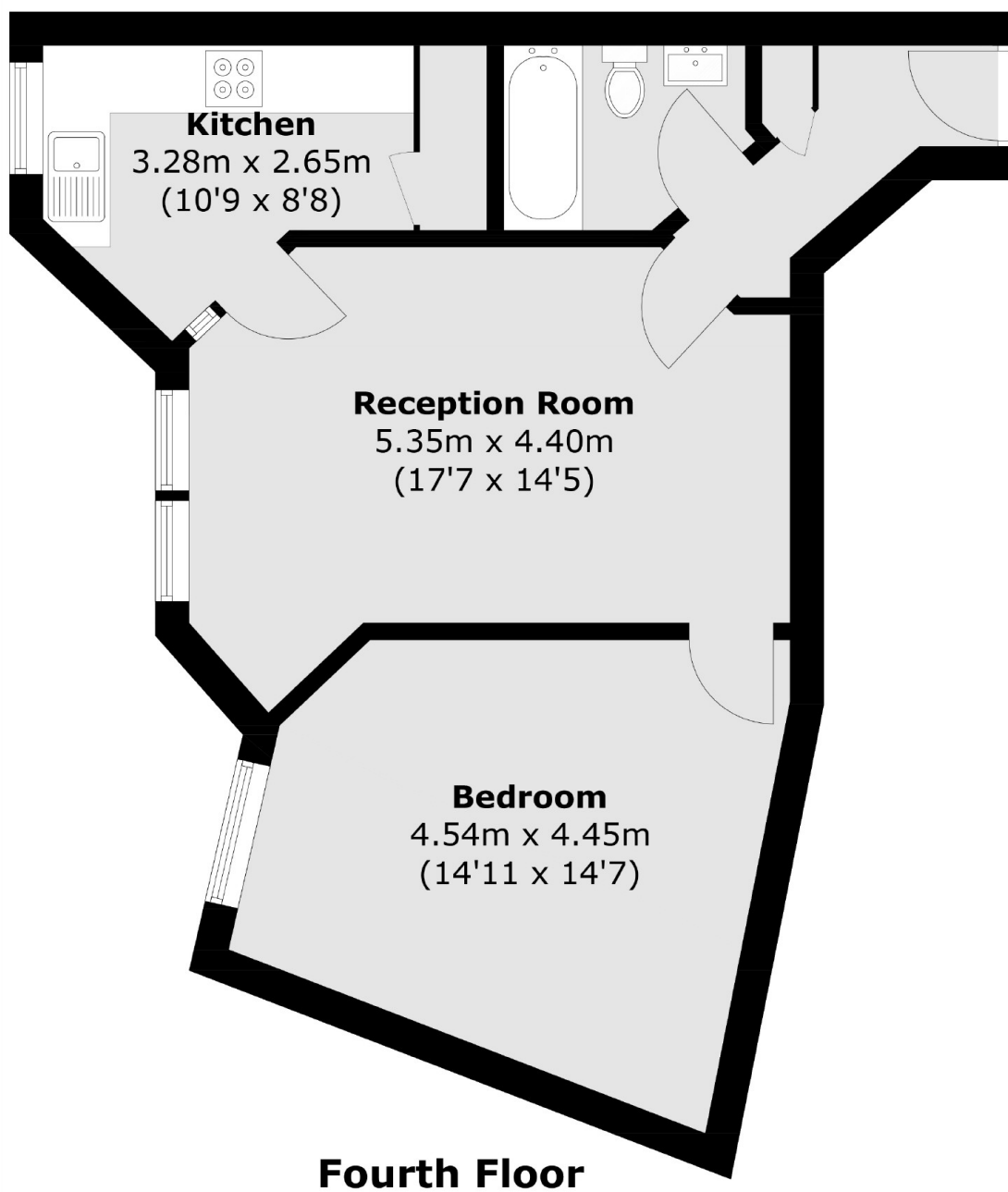
Located on the fourth floor of a purpose built development with a lift, a spacious one double bedroom apartment with the added benefit of a separate kitchen - Heating & hot water included.

Upper Berenger Walk is located within the World's End Estate, tucked away from the hustle and bustle of the Kings Road and Chelsea Embankment. An array of shops, transport links, restaurants and cafés are moments away.

Features

- Large One Bedroom
- Fourth Floor
- Lift
- Wood Floors Throughout
- Separate Kitchen
- Heating & Hot Water Inc

Upper Berenger Walk, London, SW10



Total area (approx.): 49.9 sq. m (537.1 sq. ft)