

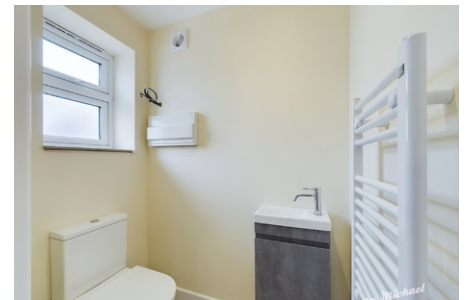
28 Newman Close,  
Aylesbury, Buckinghamshire

£1,400 PCM



**\*\*Available with a Zero Deposit Guarantee\*\***

Michael Anthony Aylesbury Lettings are pleased to present to the market this brand new two bedroom semi-detached home. The property is situated in an exclusive cul-de-sac location comprising, entrance hallway, cloakroom WC, kitchen/diner with fitted appliances, a lounge, two bedrooms and a family bathroom. The property also benefits from double glazing, solar panels, heat source pump heating, EV car charging point, block paved driveway parking for 2-3 vehicles and an enclosed turfed rear garden with a patio.



- **\*\*Available Zero Deposit Guarantee\*\***
- **UNFURNISHED**
- **NEW BUILD**
- **2 BED SEMI-DETACHED**
- **KITCHEN WITH APPLIANCES**
- **LIVING ROOM**