



G2 The Court, St Marys Place, Shrewsbury, SY1 1DY

1 bedroom apartment — £210,000 Leasehold

G2 The Court, St Marys Place, Shrewsbury, SY1 1DY

Coopergreenpooks.co.uk

£210,000 Leasehold — 1 bedroom apartment

sales@cgpooks.co.uk

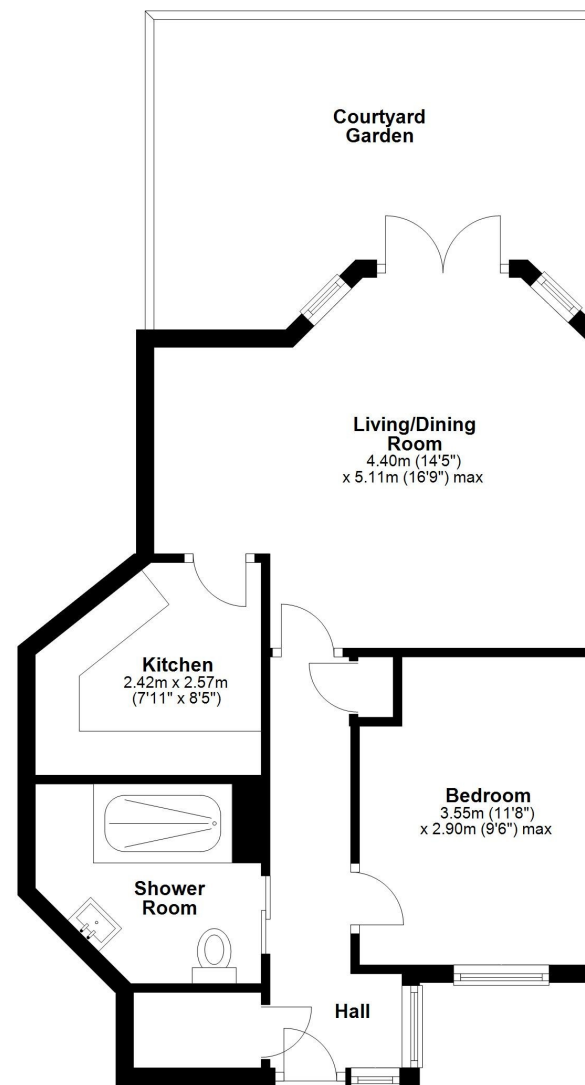
Quietly situated within the heart of the town centre, this individual ground floor apartment has been recently improved and updated, providing well-designed accommodation, forming part of an imposing building of character, with the benefit of a private entrance and courtyard garden with a pleasant outlook to the rear.

KEY FEATURES

- Private front door and entrance hall with useful storage, including a utility cupboard with connections for a washing machine
- Lovely open plan living/dining room with a feature bay and glazed double doors opening onto the courtyard garden
- Separate kitchen with a range of fitted units and space for appliances
- Double bedroom with window to front, and a re-fitted shower room which has been finished to a high standard, comprising a walk-in shower, vanity unit, and heated towel rail
- The private courtyard garden is paved for easy maintenance, has gated access to further communal gardens, offering views to the rear overlooking the River Severn and towards Haughmond Hill in the distance
- G2 is accessed via St Mary's Court, where there is a gateway in front of The Court leading to just two properties and the private front door to this apartment
- A fantastic location, quietly tucked away, while still being just a stone's throw from the town centres main shopping areas, a range of bars/restaurants, and Quarry Park
- Sold vacant with no upward chain

Ground Floor

Approx. 45.0 sq. metres (484.1 sq. feet)



Total area: approx. 45.0 sq. metres (484.1 sq. feet)







G2 The Court, St Mary's Place, Shrewsbury, SY1 1DY

£210,000 Leasehold — 1 bedroom apartment

sales@cgpooks.co.uk

rightmove

onTheMarket.com

RICS
Regulated by RICS



BOUNDARIES NOT CONFIRMED

Local Authority	Shropshire Council
Council Tax	Band B
EPC Band	Band D
Services	All mains services are connected

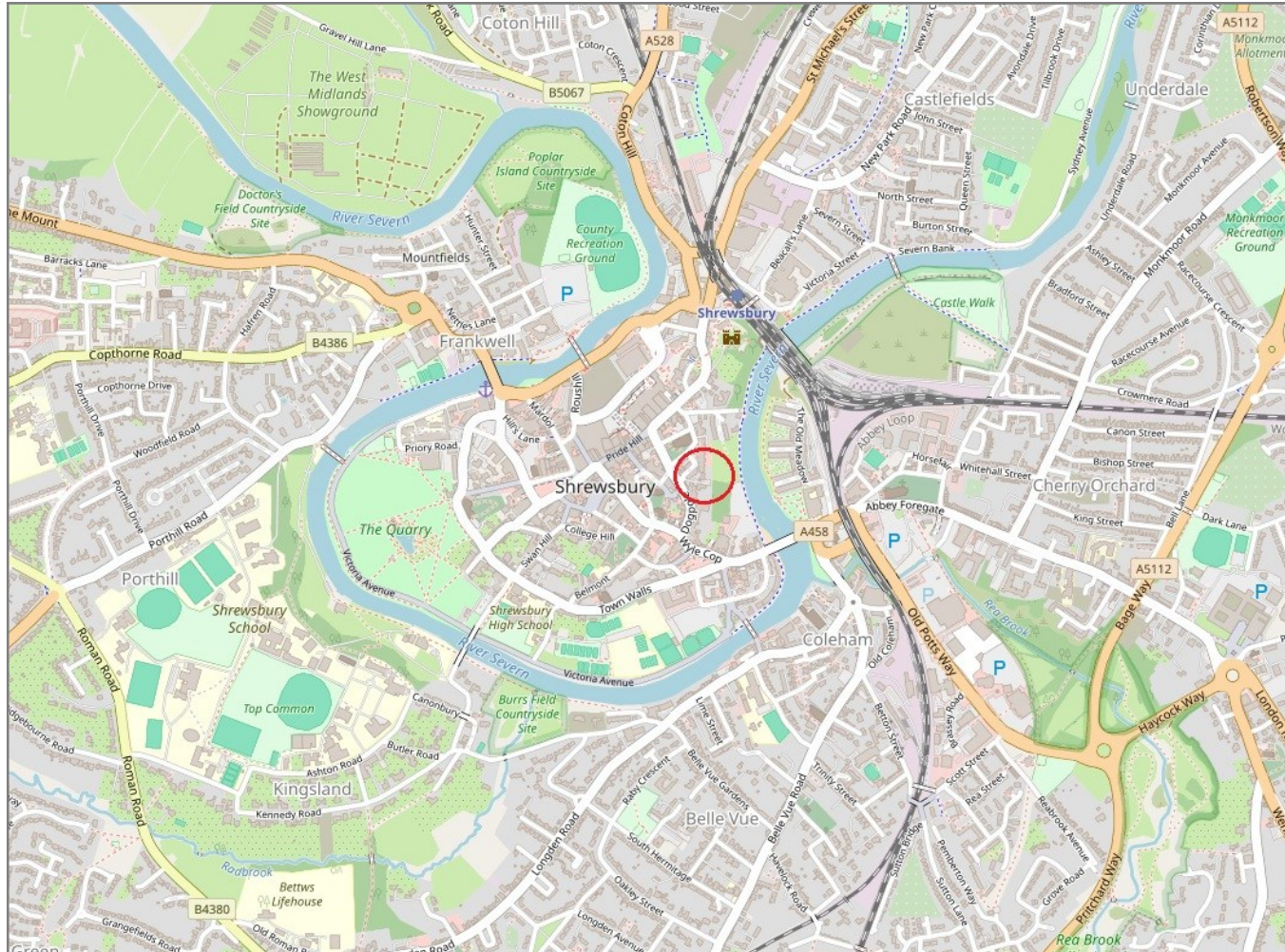
Tenure	Leasehold
Lease Length	160 years from 31/07/2013
Service Charge	£1,208 per annum

G2 The Court, St Marys Place, Shrewsbury, SY1 1DY

Coopergreenpooks.co.uk

£210,000 Leasehold — 1 bedroom apartment

sales@cgpooks.co.uk



IMPORTANT NOTICE: Cooper Green Pooks for themselves and for the lessors or vendors of this property whose agents they are give notice that: 1 No appliances, services or service installations have been tested and no warranty as to suitability or serviceability is implied. Any prospective purchaser or lessee is advised to obtain verification from their surveyor or solicitor. 2. The particulars are set out as a general outline only for the guidance of the intended purchasers or lessees and do not constitute, nor constitute part of, an offer or contract. 3. All descriptions, reference to condition and necessary permissions for use and occupation and other details are given in good faith and are believed to be correct but any intending purchasers or lessees should not rely on them as statements or representation of fact but satisfy themselves by inspection or otherwise as to the correctness of each of them. 4. No person in the employment of Cooper Green Pooks has any authority to make or give any representation or warranty whatsoever in relation to this property. 5. All rentals and prices are quoted exclusive of Stamp Duty, legal and surveyors fees and any other associated purchasers or lessees costs. 6. Floor plans are indicative only and should not be relied on. 7. The plan showing the boundary of the property is indicative only and has not been checked against the legal title so should not be relied on. 8. All dimensions, floor areas and site areas are only approximate and should not be relied on. Dimensions are generally maximum room dimension.