

abbotFox



Costessey, Norwich, NR8
£1,050 Per Month

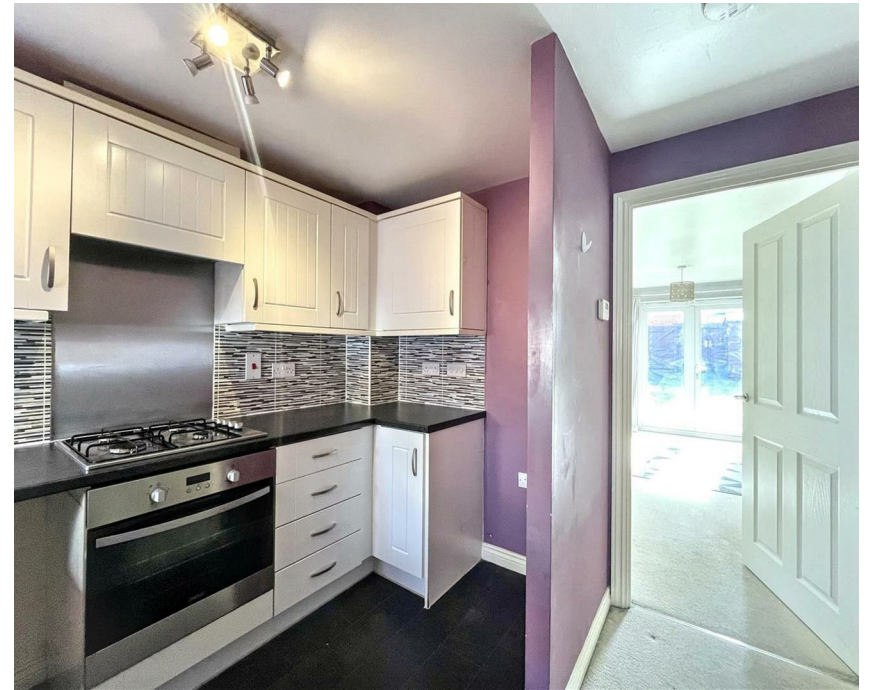
“

We are a team of genuine individuals who hold a deep passion for both property and marketing. Collectively, we bring over 70 years of experience in the property market of Norfolk and Suffolk. Our affection for both counties runs deep, and we are enthusiastic about sharing our passion with you.

Colin McKenzie | **Branch Partner**







THE DETAIL _____

AbbotFox present this well-proportioned two-bedroom end-terrace home, ideally situated within a popular residential area and within easy reach of a wide range of local amenities. Perfectly suited to young families or professionals, the property offers a great balance of space, comfort, and convenience.

The accommodation is thoughtfully arranged, comprising an inviting entrance hall, a well-equipped kitchen, cloakroom, and a spacious lounge diner to the ground floor. To the first floor are two generous double bedrooms and a family bathroom, all accessed from the landing.

Externally, the property benefits from its end-terrace position, providing an added sense of privacy, along with two allocated parking spaces located adjacent to the home.



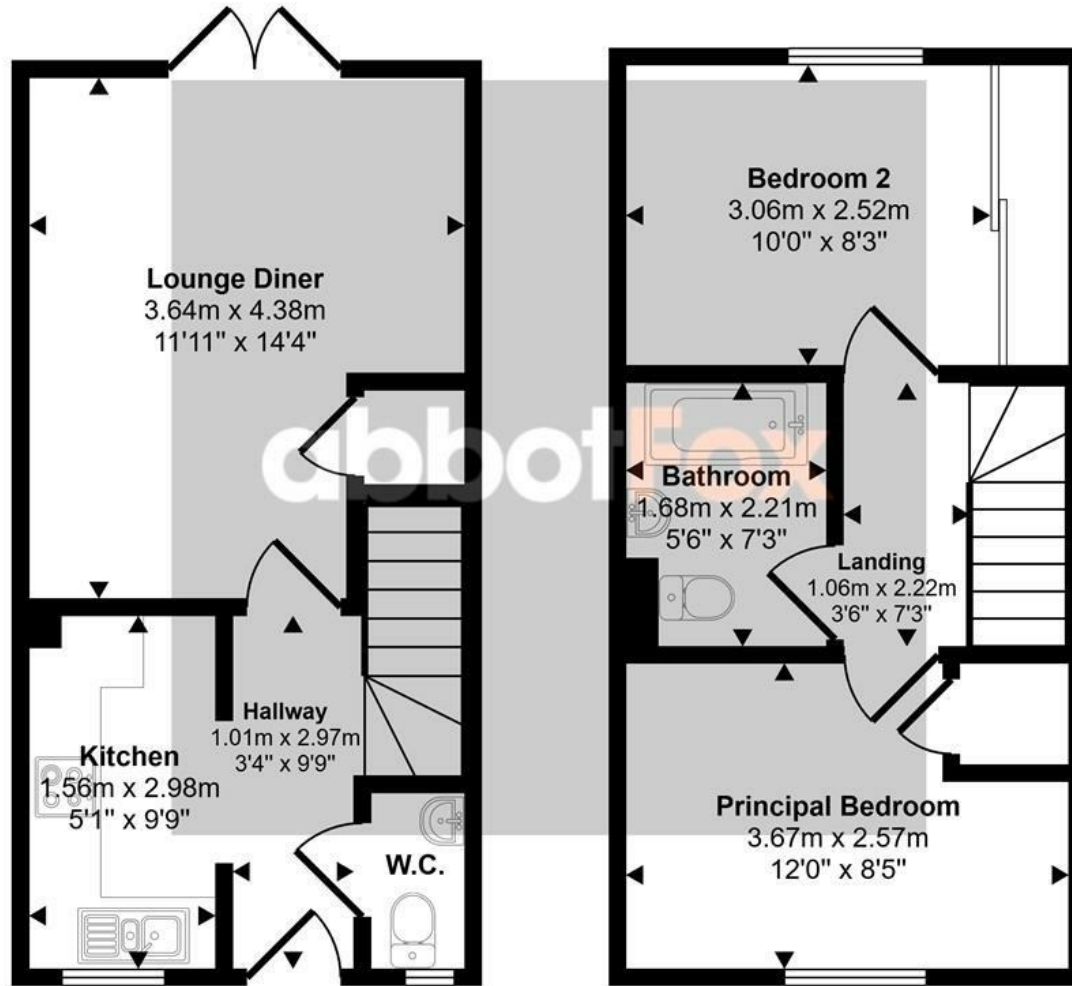




THE HIGHLIGHTS _____

- Viewing advised
- End terraced house
- Two double bedrooms
- Generous living accommodation
- Convenient location
- Two allocated parking spaces
- Enclosed private gardens

Approx Gross Internal Area
56 sq m / 601 sq ft



Ground Floor
Approx 28 sq m / 299 sq ft

First Floor
Approx 28 sq m / 302 sq ft

This floorplan is only for illustrative purposes and is not to scale. Measurements of rooms, doors, windows, and any items are approximate and no responsibility is taken for any error, omission or mis-statement. Icons of items such as bathroom suites are representations only and must not be taken as the real items. Made with Made Easy 200

Let's talk

01603 660000

sales@abbotfox.co.uk

@abbotfox

EPC RATING - C

Disclaimer – In accordance with the Property Misdescriptions Act, the company abbotFox gives notice that all descriptions, references to condition, necessary permissions for use and other details are given in good faith and believed to be correct, but any purchaser should not rely on them as statements of fact, and must satisfy themselves by inspection or other means, as to their accuracy.