



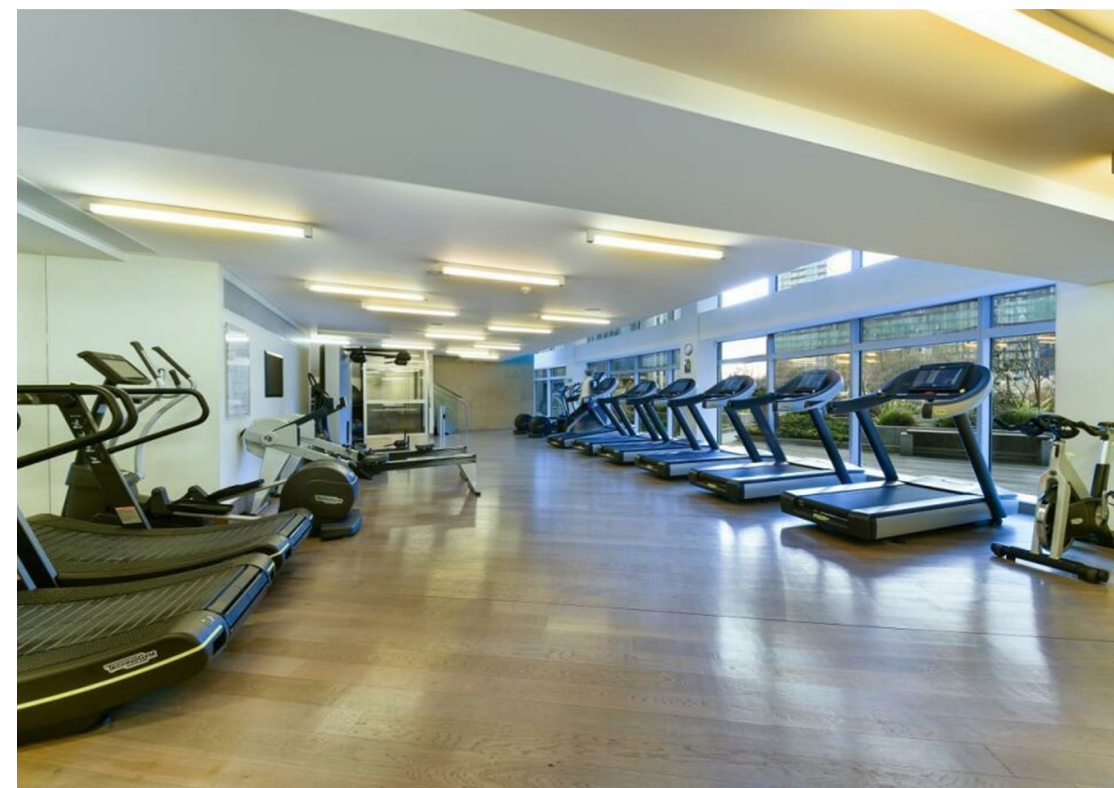
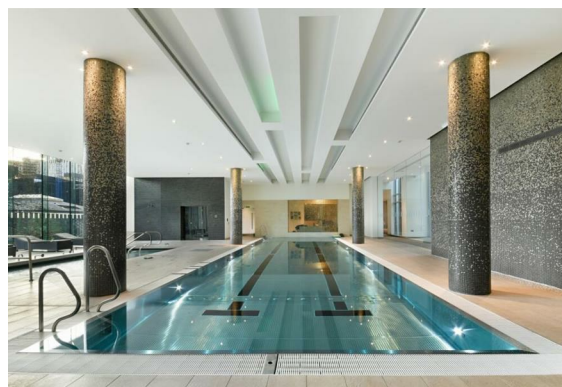
Sample 1 Pan Peninsula Square, London, E14 9HG

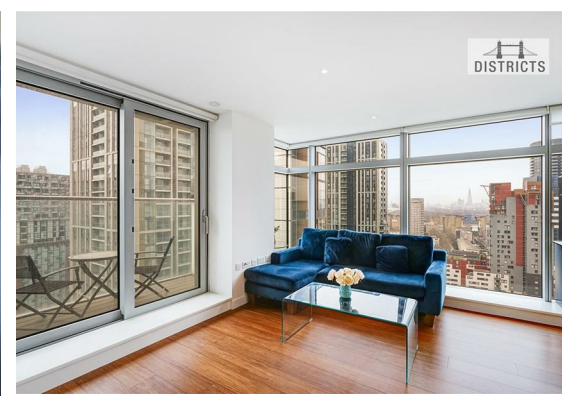
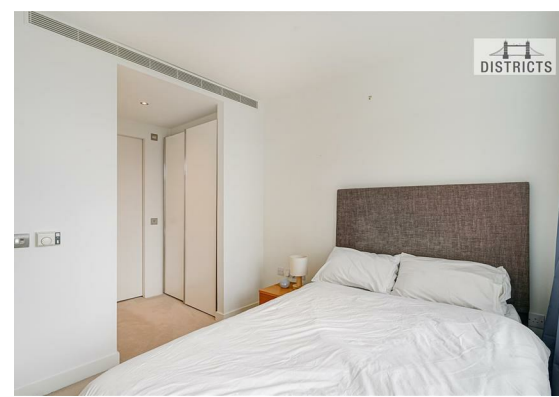
£695 Per week

 2  2  1  B

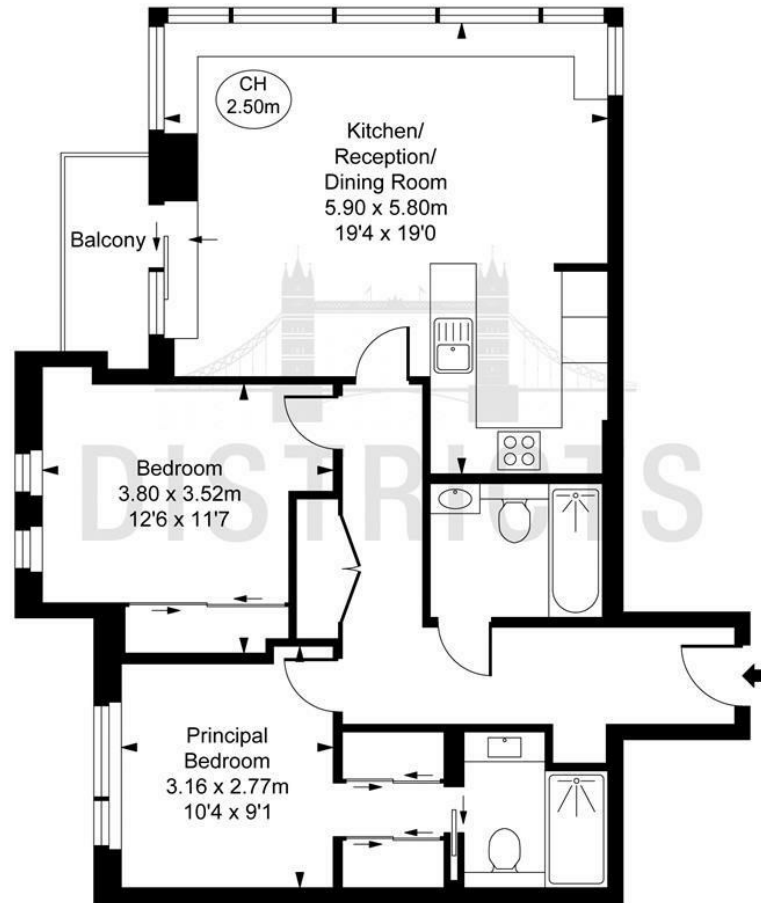
Bright and spacious two double bedroom apartment on a high floor and located in the prestigious Pan Peninsula development. Comprising two double bedrooms, two luxury bathrooms (both ensuite), open plan reception with a modern kitchen. Located few moments from the heart of London's fastest growing business district, Pan Peninsula is incredibly well connected with direct access to South Quay DLR station, 5 minutes to Canary Wharf Underground Station and Crossrail (The Elizabeth Line).

Residents enjoy a luxury city lifestyle as they immerse themselves in what this central London location has to offer, providing fantastic facilities including a state-of-the-art gym, a swimming pool, screening room, 24 hr Concierge Service and valet parking.





Pan Peninsula Square, E14
 Approximate Gross Internal Area
 74.47 sq m / 802 sq ft
 (CH = Ceiling Heights)



This plan is not to scale. It is for guidance and not for valuation purposes.
 All measurements and areas are approximate only, and have been prepared in accordance with the current edition of the RICS Code of Measuring Practice.
 © Fulham Performance

Energy Efficiency Rating		Current	Potential
Very energy efficient - lower running costs			
(92 plus) A			
(81-91) B		83	85
(69-80) C			
(55-68) D			
(39-54) E			
(21-38) F			
(1-20) G			
Not energy efficient - higher running costs			
England & Wales		EU Directive 2002/91/EC	

These particulars, whilst believed to be accurate are set out as a general outline only for guidance and do not constitute any part of an offer or contract. Intending purchasers should not rely on them as statements of representation of fact, but must satisfy themselves by inspection or otherwise as to their accuracy. No person in this firms employment has the authority to make or give any representation or warranty in respect of the property.