





14 Sandeman Crescent

Northwich

Immaculate three-bed end terrace on a corner plot with stylish design throughout. Viewings HIGHLY recommended to fully appreciate the beauty of this home!

Council Tax band: B

Tenure: Freehold

EPC Energy Efficiency Rating: C

EPC Environmental Impact Rating: C

- Incredibly Gorgeous Family Home
- Set on a Corner Plot
- Immaculate Design Throughout
- Three Bedrooms
- En-Suite to the Master Bedroom
- Downstairs WC
- Kitchen Diner with Integral Appliances
- Two Driveways!
- Bin Storage
- Close to Local Amenities

Hallway

Lounge

Kitchen Diner

Downstairs WC

Landing

Master Bedroom

En-Suite

Bedroom Two

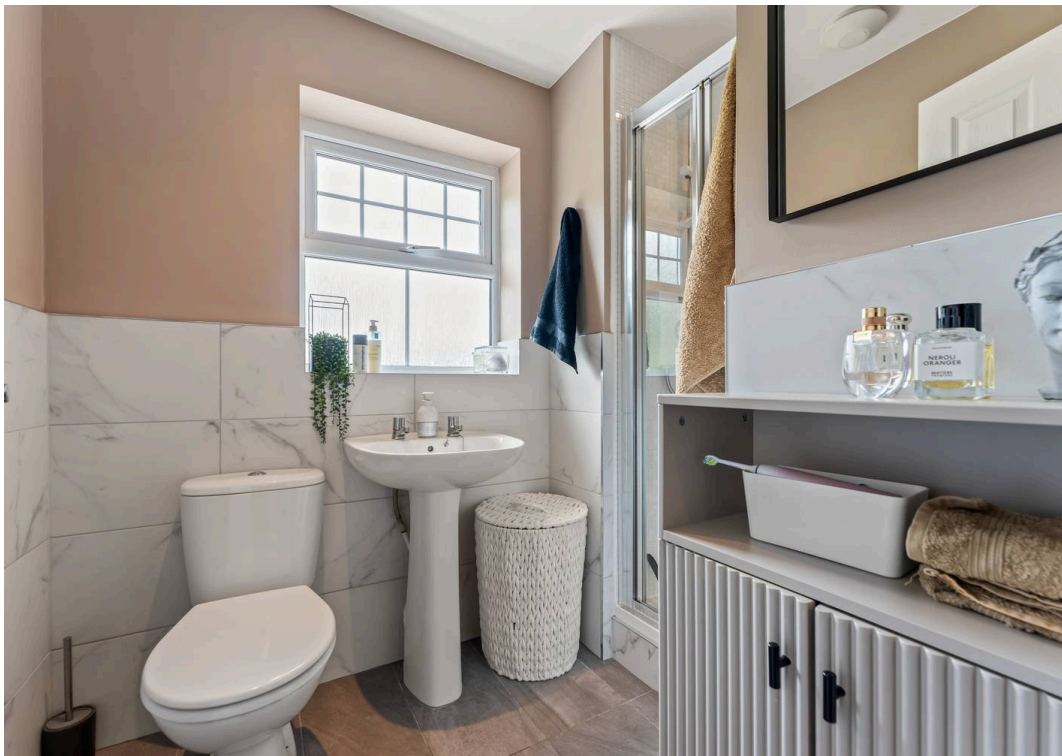
Bedroom Three

Bathroom















Sandeman Crescent Winnington

Approximate Gross Internal Floor Area = 70.4 sq m / 758 sq ft

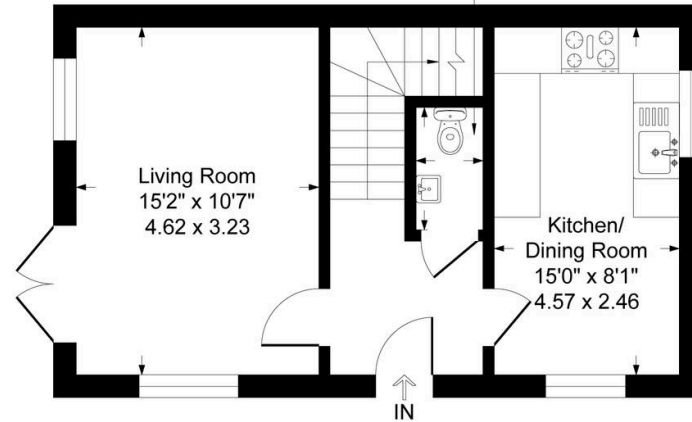
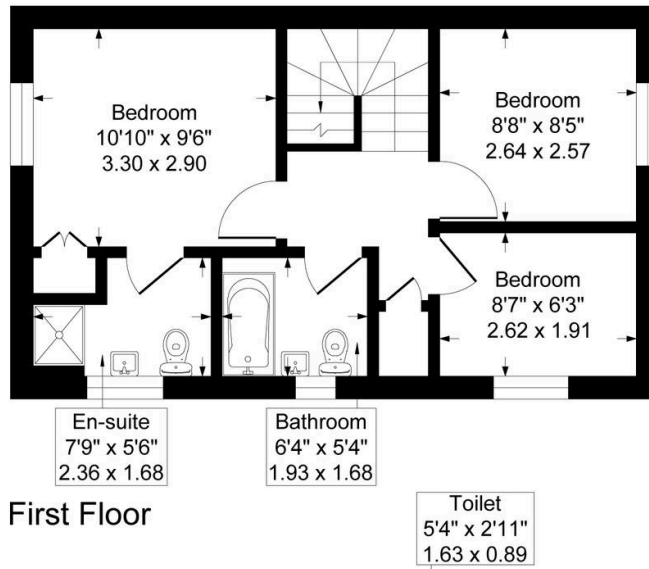


Illustration for identification purposes only, measurements are approximate, not to scale.

Vincent James Estate Agents

87 Witton Street, Northwich - CW9 5DR

01606663939 • hello@vincentjamesestateagents.co.uk • www.vincentjamesestateagents.co.uk/