



Porters Croft, Birmingham B17 8RU

welcome to

Porters Croft, Birmingham

A beautifully presented and well-appointed 3 double bedroom Detached house with front and back garden conservatory driveway and garage in a great location a highly versatile accommodation

Viewings are highly recommended for this exceptional investment opportunity, first time buyers' family home.

Agent Note

This property is council tax band E.

Entrance Porch

Front door into porch that leads to hall.

Hall

Stairs to first floor, doors to w/c and 2 doors to lounge.

W/C

6' 9" x 3' (2.06m x 0.91m)

Low level flush w/c, wash hand basin, laminate flooring, tiles to splash-prone areas, central heating radiator.

Lounge

21' 3" x 19' (6.48m x 5.79m)

(L Shape). Double glazed windows & double doors to rear, door to kitchen, carpet, 3 central heating radiators, wall light connections, feature fireplace with inset fire, space for dining table.

Kitchen

11' 5" x 8' 9" (3.48m x 2.67m)

Double glazed window to rear, door to lean to/hall, tiled flooring, tiles to splash-prone areas, ceiling spotlights, wine rack, integrated oven & hob, sink & drainer with mixer tap, range of wall & base units with drawers and worktops over.

Lean-To/Hall

Door to garage, access from front to rear, tiled flooring, lighting.

Conservatory

18' 9" x 8' 7" (5.71m x 2.62m)

Glass window & doors surround, wall light connections, central heating radiator, carpet.

Landing

Doors to all 3 bedrooms & bathroom, double glazed window to rear.

Bedroom 1

15' x 10' 10" (4.57m x 3.30m)

Double glazed window to front, built in cupboard, central heating radiator, carpet, ceiling light connection.

Bedroom 2

11' 5" x 11' 2" (3.48m x 3.40m)

Double glazed window to rear, built in cupboard, central heating radiator, carpet, ceiling light connection.

Bedroom 3

14' x 9' 1" (4.27m x 2.77m)

Double glazed window to front, built in cupboard, central heating radiator, carpet, ceiling light connection.

Bathroom

9' 1" x 7' 8" (2.77m x 2.34m)

Double glazed window to rear, ceiling light connection, fully tiled, heated towel rail, wash hand basin with mixer tap & storage beneath, mirror cabinet above, bath with mixer tap, low level flush w/c, corner shower cubical with glass doors.

Front Garden

Block paved driveway, small lawned area, small step up to front porch.

Rear Garden

Conservatory leads to rear garden, lawned area. block paved patio area, fencing surrounds for privacy, arrangement of shrubs & plants.





Garage

17' 11" x 8' 9" (5.46m x 2.67m)

Plumbing for washing machine & tumble dryer, base units and worktops over.



check out more properties at shipways.co.uk



welcome to

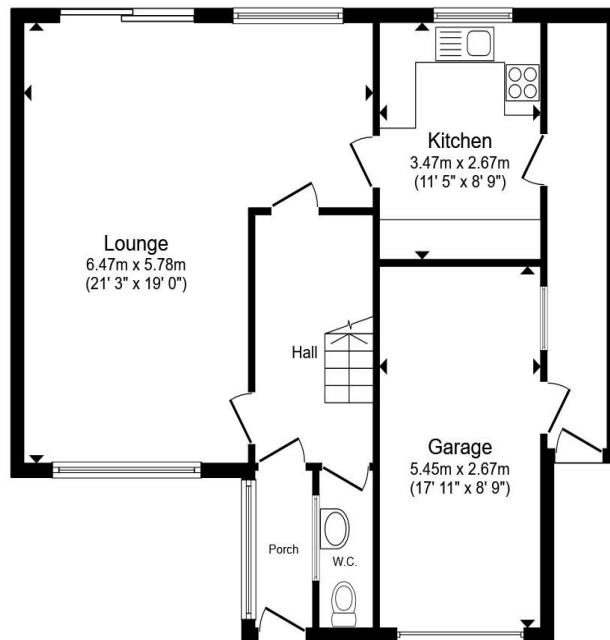
Porters Croft, Birmingham

- A Stunning detached family home
- Large living/dining room
- Ground floor WC
- Three double bedrooms
- Large conservatory

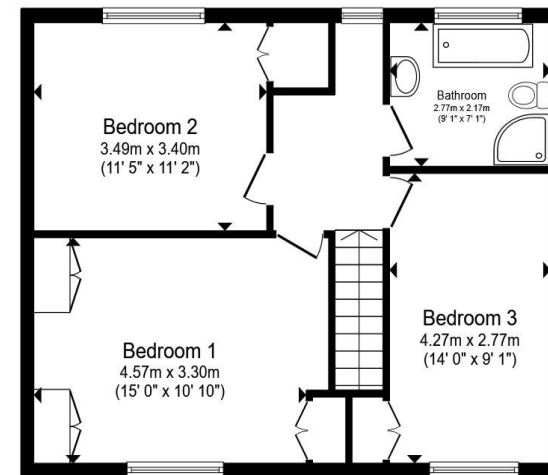
Tenure: Freehold EPC Rating: D
Council Tax Band: E

offers in the region of

£550,000



Ground Floor



First Floor

Total floor area 132.3 m² (1,424 sq.ft.) approx

This floor plan is for illustrative purposes only. It is not drawn to scale. Any measurements, floor areas (including any total floor area), openings and orientation are approximate. No details are guaranteed, they cannot be relied upon for any purpose and they do not form part of any agreement. No liability is taken for any error, omission or misstatement. A party must rely upon its own inspection(s). Powered by www.propertybox.io



check out more properties at shipways.co.uk



Property Ref:
HBN111670 - 0002

1. MONEY LAUNDERING REGULATIONS Intending purchasers will be asked to produce identification documentation at a later stage and we would ask for your co-operation in order that there is no delay in agreeing the sale. 2. These particulars do not constitute part or all of an offer or contract. 3. The measurements indicated are supplied for guidance only and as such must be considered incorrect. Potential buyers are advised to recheck measurements before committing to any expense. 4. We have not tested any apparatus, equipment, fixtures or services and it is in the buyers interest to check the working condition of any appliances. 5. Where an EPC, or a Home Report (Scotland only) is held for this property, it is available for inspection at the branch by appointment. If you require a printed version of a Home Report, you will need to pay a reasonable production charge reflecting printing and other costs. 6. We are not able to offer an opinion either written or verbal on the content of these reports and this must be obtained from your legal representative. 7. Whilst we take care in preparing these reports, a buyer should ensure that his/her legal representative confirms as soon as possible all matters relating to title including the extent and boundaries of the property and other important matters before exchange of contracts.

Shipways is a trading name of Sequence (UK) Limited which is registered in England and Wales under company number 4268443, Registered Office is Cumbria House, 16-20 Hockliffe Street, Leighton Buzzard, Bedfordshire, LU7 1GN. VAT Registration Number is 500 2481 05.

Not for marketing purposes INTERNAL USE ONLY



0121 427 3264



harborne@shipways.co.uk



172 High Street, Harborne, BIRMINGHAM,
West Midlands, B17 9PP



shipways.co.uk