

SNELLERS

ESTATE AGENTS



Lisbon Avenue, TW2

£2,995 PCM

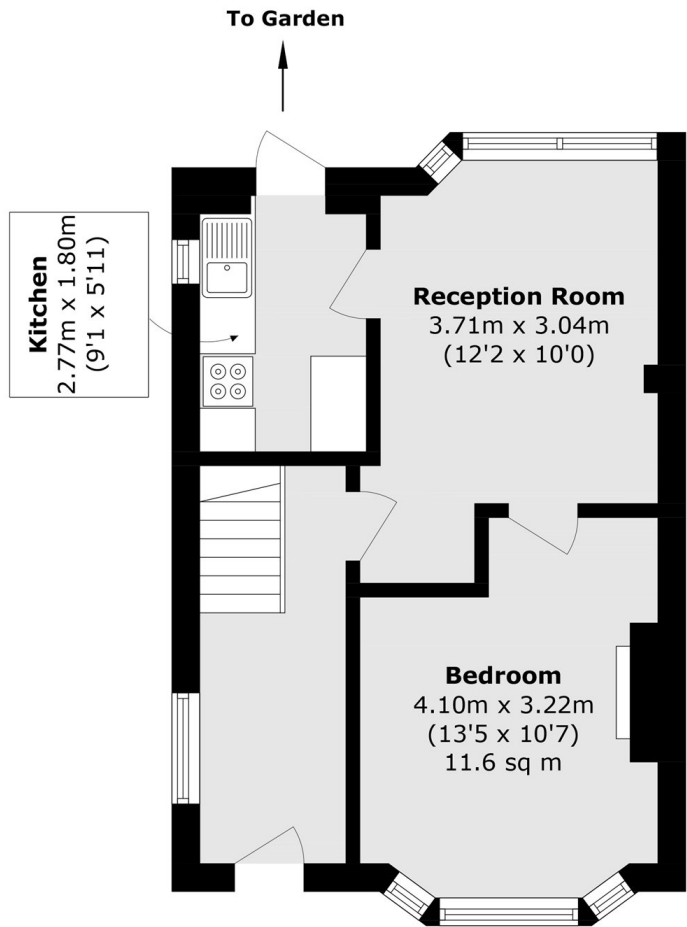
A semi detached family home in a popular residential area. There are three bedrooms (two large doubles), a fully tiled bathroom, two reception rooms and a modern kitchen. The property benefits from a 40 ft garden and off street parking for four cars.

Lisbon Avenue is a quiet residential street accessed via Staines Road, within easy access to Twickenham town centre. Fulwell mainline station is less than a mile away and less than half a mile is Whitton mainline station and high street.

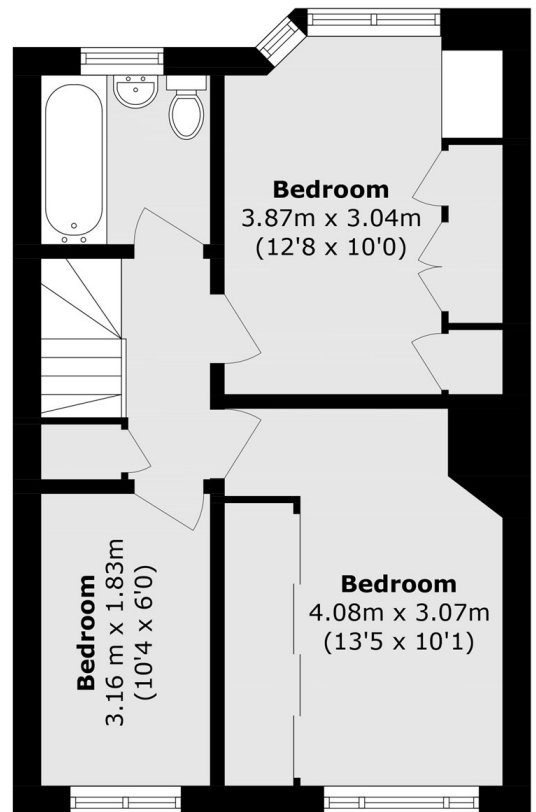
- Semi Detached • Three Bedrooms • Two Reception Rooms •
- Garden • Off Street Parking • Close to Station •

SNELLERS

ESTATE AGENTS



Ground Floor



First Floor

Total area (approx.): 76.6 sq. m (834.5 sq. ft)

Snellers Twickenham Lettings
64-66 Heath Road
Twickenham
TW1 4BX
020 8892 5678
twickenhamlettings@snellers.co.uk

Energy Rating: D We aim to make our particulars both accurate and reliable. However they are not guaranteed; nor do they form part of an offer or contract. If you require clarification on any points then please contact us, especially if you're traveling some distance to view. Please note that appliances and heating systems have not been tested and therefore no warranties can be given as to their good working order