



Lammas Close, Hilmarton, Calne, SN11 8SF

Calne

**Offers in the Region of
£280,000**

Bedrooms: 2 | Bathrooms: 1 | Receptions: 1

Atwell Martin are delighted to offer this recently refurbished two-bedroom semi-detached bungalow, ideally situated in a sought-after village location with open countryside views.

The accommodation comprises an entrance hall, two well-proportioned double bedrooms, a modern shower room, and a bright open-plan kitchen/dining/living area, creating a versatile and welcoming living space.

Externally, the property occupies a substantial corner plot, offering excellent potential to extend (subject to the necessary planning permissions). Additional features include an outdoor utility room with plumbing for a washing machine, and the property is surrounded by peaceful rural views.

To the front, there is driveway parking for two vehicles along with a low-maintenance gravelled garden complemented by raised flower beds.

Further benefits include no onward chain, making this an ideal opportunity for a smooth and straightforward purchase.

Viewing -

Viewings Strictly by appointment with the sole selling agents Atwell Martin call or e-mail us today to confirm your appointment | 13 High Street, Calne, Wiltshire, SN11 0BS

Situation - Hilmarton, Calne -

Hilmarton is a small, historic village in Wiltshire, located just northeast of Calne. It features a 12th-century church, traditional cottages, and buildings from the 19th century, many built by the Poynder family. With its rural charm and close-knit community, Hilmarton offers a peaceful countryside setting with its own village pub and primary school, while being close to nearby towns easily accessed via the local bus routes.

Property Information -

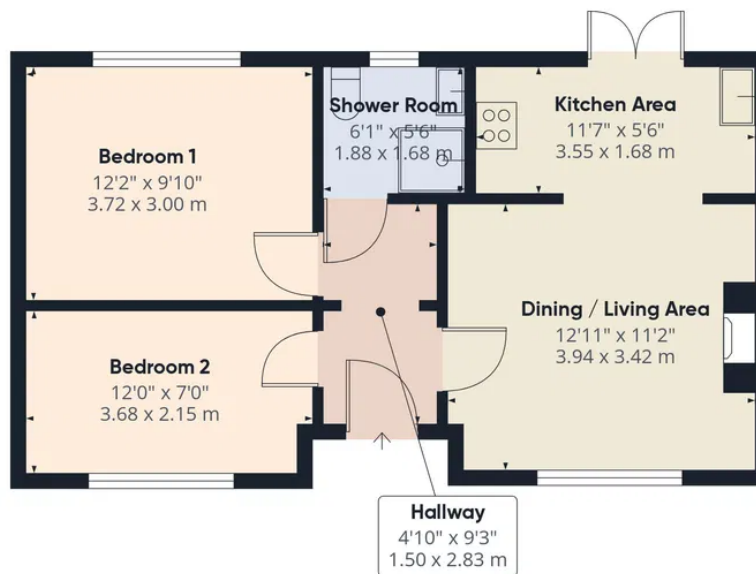
Utilities/Services - Mains Electric, Water & Drainage, Electric Heating

Wiltshire Council Tax - Band C

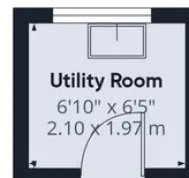
Tenure - Freehold







Ground Floor Building 1



Ground Floor Building 2



Approximate total area⁽¹⁾

537 ft²

50 m²

(1) Excluding balconies and terraces

Calculations reference the RICS IPMS 3C standard. Measurements are approximate and not to scale. This floor plan is intended for illustration only.

GIRAFFE360

Calne Sales

13 High Street, Calne Wiltshire, SN11 0BS

01249 813813

res.calne@atwellmartin.co.uk

<https://calne.atwellmartin.co.uk/>