



Coverdale Road W12



Coverdale Road W12

4/5 BEDROOMS

2/3 RECEPTIONS

KITCHEN / BREAKFAST ROOM

2 BATHROOMS

LOFT ROOM WITH STORAGE

PRIVATE GARDEN

EPC RATING D 63

COUNCIL TAX BAND H

A well presented 4/5 bedroom upper maisonette arranged over the raised ground, first, second and third floors of an impressive Victorian terraced building, retaining original features including ceiling roses, cornicing and flooring. This substantial home offers excellent living and entertaining space, a private entrance, and its own garden.

The raised ground floor features a bright and spacious double reception room with wooden flooring, striking high ceilings, a charming bay window, and an elegant feature fireplace, with original cornicing and ceiling roses, along with a clearly defined dining area. The kitchen is complemented by a generous breakfast room, with direct access to stairs leading down to the private garden.

On the first floor, the front bedroom is flooded with natural light and is currently used as an additional reception room. This level also includes a further double bedroom and a modern shower room.

The second floor provides 3 well proportioned bedrooms and a family bathroom, with stairs leading up to a versatile loft room, which offers scope for conversion and provides a huge space to make as your own, perfect for use as a home office, playroom, or guest space.

Extending to approximately 2,283 sq ft, this well configured maisonette is ideally located close to a range of highly regarded state and private schools. Excellent transport links can be found at Shepherd's Bush, while the extensive shopping, dining, and leisure amenities of Westfield London are all within easy reach with St Stephens Primary School nearby.

PRICE GUIDE £1,250,000
FREEHOLD

SUBJECT TO CONTRACT



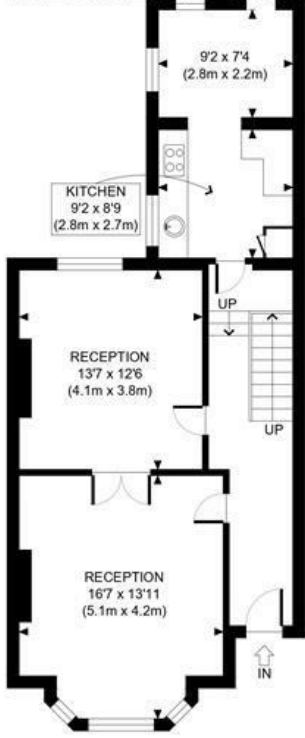
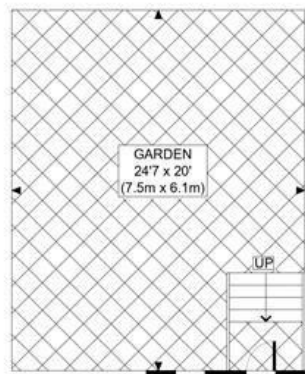




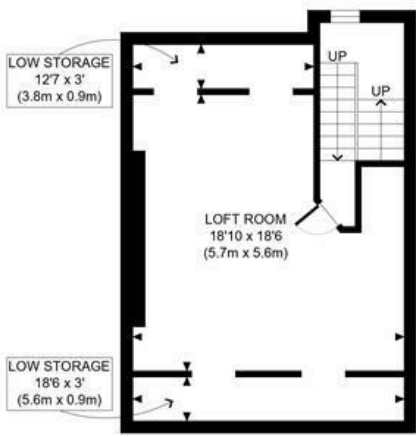




COVERDALE ROAD, W12



GROUND FLOOR
GROSS INTERNAL
FLOOR AREA 686 SQ FT



THIRD FLOOR
GROSS INTERNAL
FLOOR AREA WITH LOW STORAGE 483 SQ FT
FLOOR AREA WITHOUT LOW STORAGE 377 SQ FT



FIRST FLOOR
GROSS INTERNAL
FLOOR AREA 609 SQ FT



SECOND FLOOR
GROSS INTERNAL
FLOOR AREA 611 SQ FT

APPROX. GROSS INTERNAL FLOOR AREA WITH LOW STORAGE: 2389 SQ FT/ 222 SQM
APPROX. GROSS INTERNAL FLOOR AREA WITHOUT LOW STORAGE: 2283 SQ FT/ 212 SQM