



6 Ormond Avenue, Westhead

Ormskirk

Offers Over £280,000

6 Ormond Avenue

Westhead, Ormskirk

Charming 2-Bedroom Detached Bungalow –
Ormond Avenue, Westhead

Nestled in the heart of Westhead, this well-presented two-bedroom detached bungalow on Ormond Avenue offers a fantastic opportunity for those looking to downsize, invest, or create their perfect home. Set on a generous plot, the property combines comfort, space, and potential, with scope to add your own personal touch both inside and out.

Council Tax band: D

Tenure: Freehold

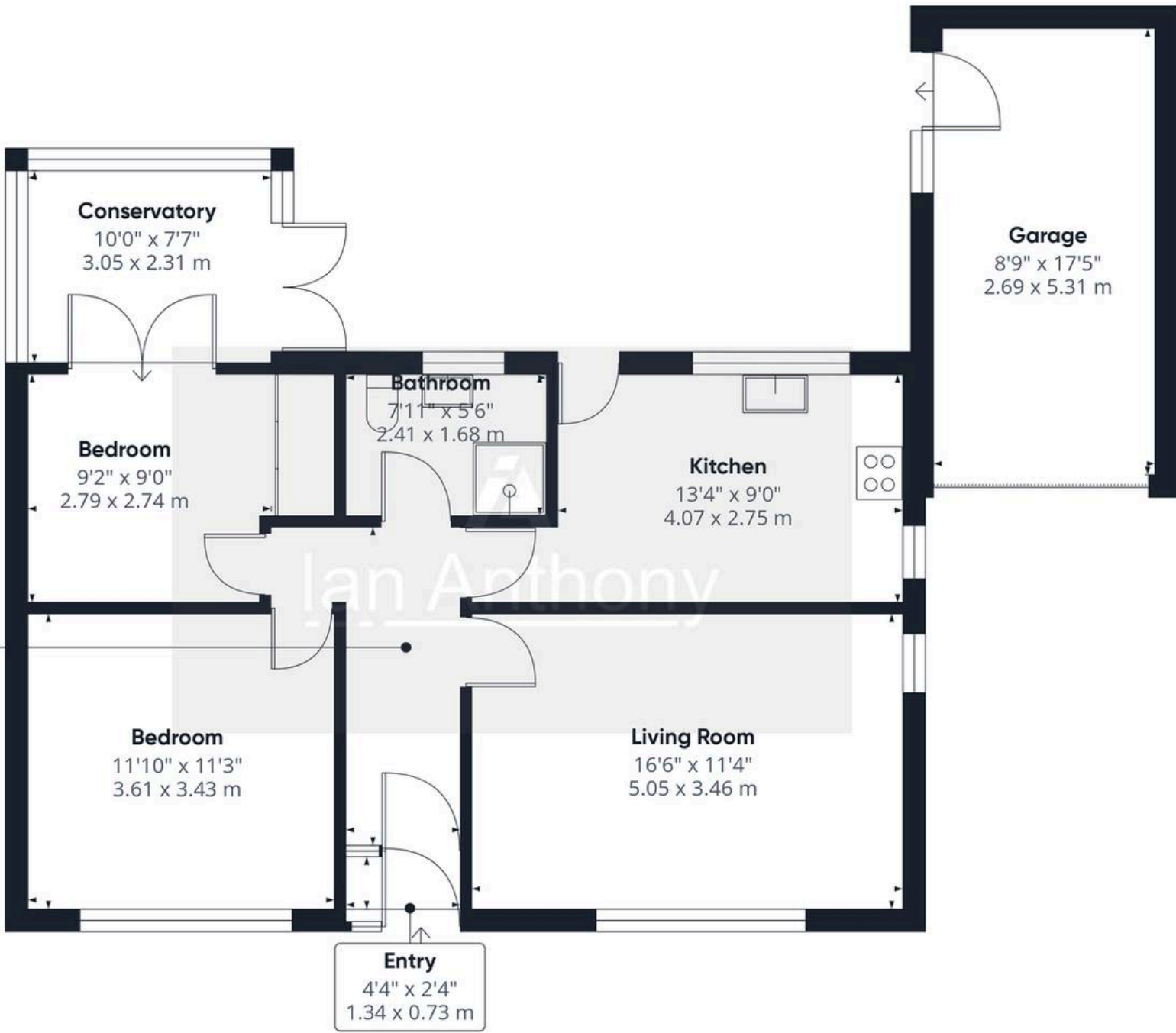
EPC Energy Efficiency Rating: C

EPC Environmental Impact Rating: D

- MODERN KITCHEN
- RESIDENTIAL LOCATION
- GARAGE
- PRIVATE DRIVEWAY
- FAMILY BATHROOM
- Garden
- TWO BEDROOMS
- MODERNISATION POTENTIAL
- DETACHED BUNGALOW
- WELL MAINTAINED GARDENS







Approximate total area⁽¹⁾
904 ft²
84 m²

(1) Excluding balconies and terraces

Calculations reference the RICS IPMS 3C standard. Measurements are approximate and not to scale. This floor plan is intended for illustration only.



IAN ANTHONY

5 Burscough Street, Ormskirk - L39 2EG

01695580888

enquiries@iananthonyestates.co.uk

iananthonyestates.co.uk/

