



## 6 Elizabethan Close

Sandy, SG19 1FB



Bradley Cooper

Partnered With

**Simpsons**  
Property Experts



Offering for sale this stunning newly built, three bedroom detached family home situated in Elizabethan Close in Sandy, this outstanding family home offers a perfect blend of modern living and comfort. It boasts three good sized bedrooms and spacious accommodation throughout. This property has been built by a private reputable builder and has been built to a high specification throughout.

Upon entrance to this property there is a hallway with stairs leading to the first floor with an under-stairs storage cupboard and cloakroom housing WC and hand basin.

Furthermore off the hallway there is a bay fronted living room and a spacious kitchen/diner/family room. The kitchen is fully fitted and features numerous wall to base cupboards with integral appliances, also French doors leading onto the rear garden. Perfect for the family who love to entertain.

The first floor comprises of three generously sized rooms and a three piece family bathroom suite. The master has the added benefit of an en-suite.

Externally the property features a fully enclosed rear garden, which is mainly laid lawn with a paved patio seating area. Additionally, the driveway to the rear provides parking for two vehicles,

The property is ready for you to move in now, allowing you to settle in without delay.

This three-bedroom detached house is not just a home; it is a lifestyle choice, offering the perfect setting for family gatherings and everyday living. With its modern design and prime location, this property is a must-see for anyone looking to make Sandy their home. Don't miss the opportunity to view this exceptional property and experience all it has to offer.

Offers over £400,000



3

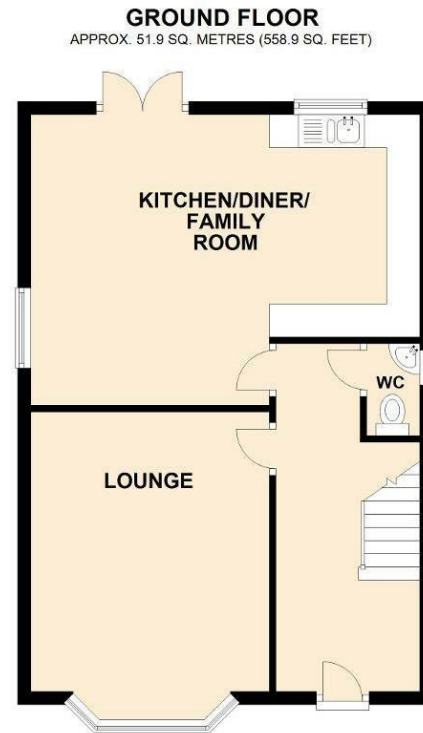


3



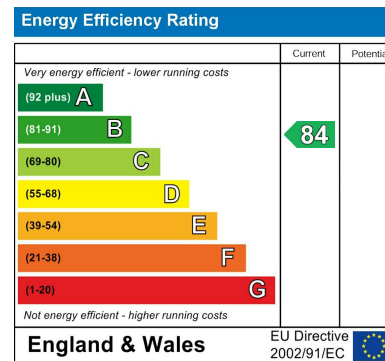
2





**TOTAL AREA: APPROX. 103.5 SQ. METRES (1114.1 SQ. FEET)**

These Floor Plans are for illustrative purposes only. Areas shown are approximate. These plans will not show the correct wall thickness, especially in older properties. We aim to provide plans that are accurate and correctly represent the rooms within the property. We do not, however, provide any guarantees, warranty or representation as to the total accuracy and completeness of the floorplan. Anyone relying on the information provided should conduct a careful independent investigation of the property to determine the suitability of the property for their requirements.  
Plan produced using PlanUp.







Bradley Cooper  
Partnered With  
**Simpsons**  
Property Experts

Tel: 01525 623064

Email: [bedford@simpsonspropertyexperts.co.uk](mailto:bedford@simpsonspropertyexperts.co.uk)

Web: [simpsonspropertyexperts.co.uk/our-locations/bedford](http://simpsonspropertyexperts.co.uk/our-locations/bedford)

