



PROPERTY
PERFECTLY PRESENTED

2 Bedrooms

Flat - Purpose Built

£540,000

Located in

Richmond





23 Gloucester Court Kew Road

Richmond | | TW9 3EB



Light, bright and spacious top floor two double-bedroom apartment in this popular 1930's development opposite the Royal Botanical Gardens offered to the market chain free

23 Gloucester Court Kew Road

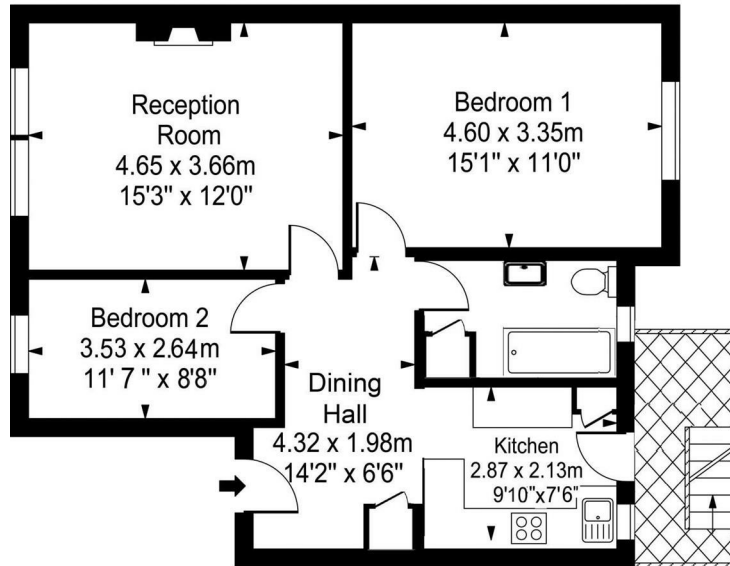
£540,000 Leasehold



- Top floor Apartment
- Light bright & spacious
- Close to Kew Village
- Outstanding transport links
- Residents off street parking
- Two bedrooms
- Opposite the Royal Botanical Gardens
- Excellent Local Amenities
- Chain Free

Gloucester Court

Approx. Gross Internal Area
68.00 Sq M - 732 Sq Ft



Every attempt is made to assure accuracy, however measurements are approximate and for illustrative purposes only. Not to scale.
Floor plan by www.frameworkphotos.co.uk

EPC Rating: E
Council Tax Band E
Local Authority

Agents Note: Whilst every care has been taken to prepare these particulars, they are for guidance purposes only. All measurements are approximate and are for general guidance purposes only and whilst every care has been taken to ensure their accuracy, they should not be relied upon and potential buyers/tenants are advised to recheck the measurements.

Energy Efficiency Rating		
	Current	Potential
Very energy efficient - lower running costs		
(92 plus) A		
(81-91) B		
(69-80) C		
(55-68) D		
(39-54) E	41	
(21-38) F		
(1-20) G		
Not energy efficient - higher running costs		
England & Wales	EU Directive 2002/91/EC	

Leyborne Park
Kew
TW9 3HB



jo@teddyproperty.com

02046 384065

30