



Connells

Florence Road
Maidstone

Florence Road
Maidstone ME16 8EL

for sale guide price
£385,000 - £400,000



Property Description

A delightful terraced house, offering a seamless blend of period charm and modern practicality. The ground floor welcomes you with a formal lounge with a fire place and boasting a bay window, adjacent dining room, and fitted kitchen. The lower ground floor houses a handy cellar ideal for flexible space or storage.

Upstairs, you'll find three well-proportioned bedrooms and a family bathroom. On the top floor the loft has been converted into a usable loft space also having the benefit of another bathroom opposite.

Enjoy a spacious rear garden featuring both patio and lawn areas—perfect for entertaining or peaceful evenings outdoors. With a summer house at the bottom of the garden as well.

On-street permit parking is available on street.

Located in the popular Florence Road area, the property benefits from strong local amenities, including shopping, cafés, and convenient access to Maidstone town centre. Excellent transport links via Maidstone West and East rail stations, and quick access to motorway routes make commuting a breeze. Highly-advised local schools sit within walking distance.



Ground Floor

Entrance Hall

Lounge

Dining Room

Kitchen

Lower Ground Floor

Basement

First Floor

Landing

Bedroom One

Bedroom Two

Bedroom Three

Bathroom

Second Floor

Loft Room

Restricted head height

Shower Room

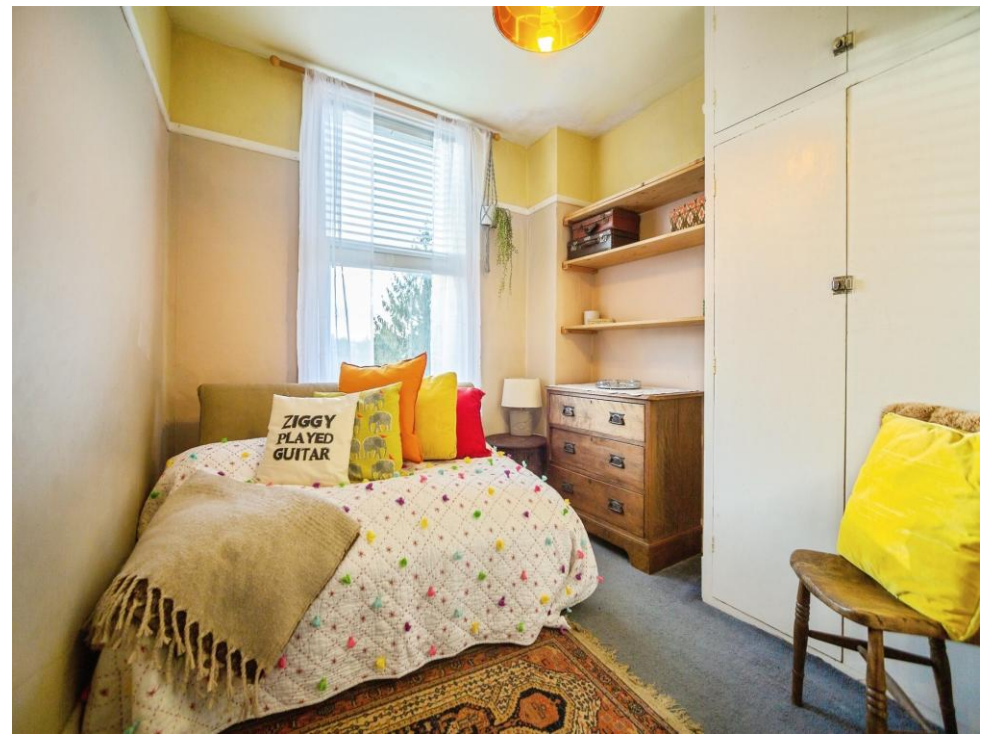
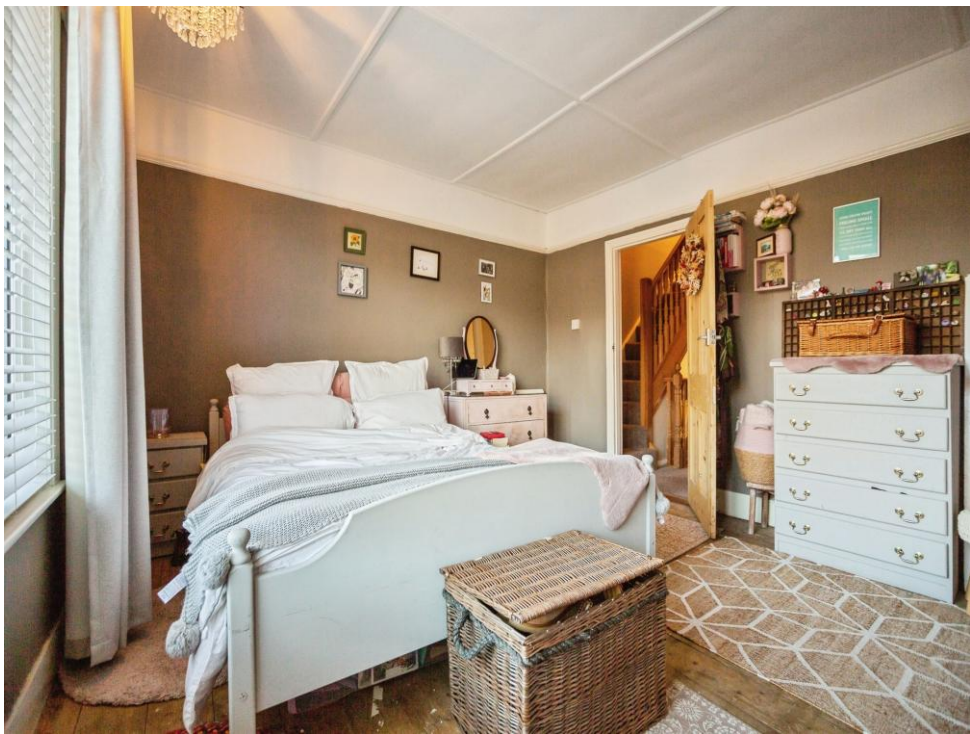
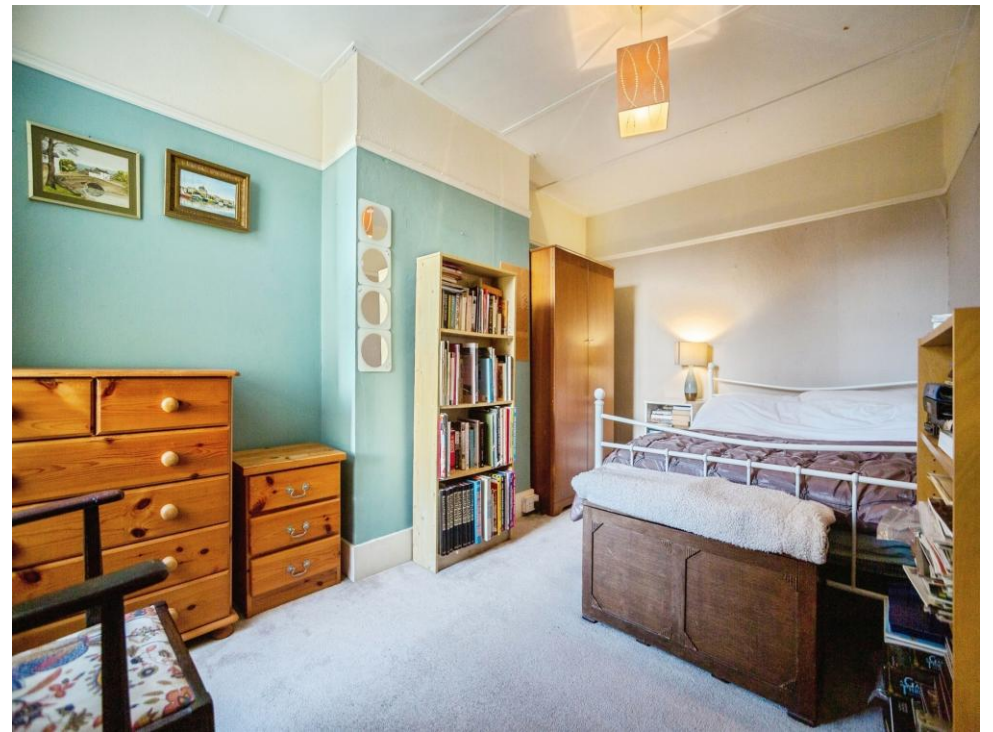
Front Garden

Rear Garden

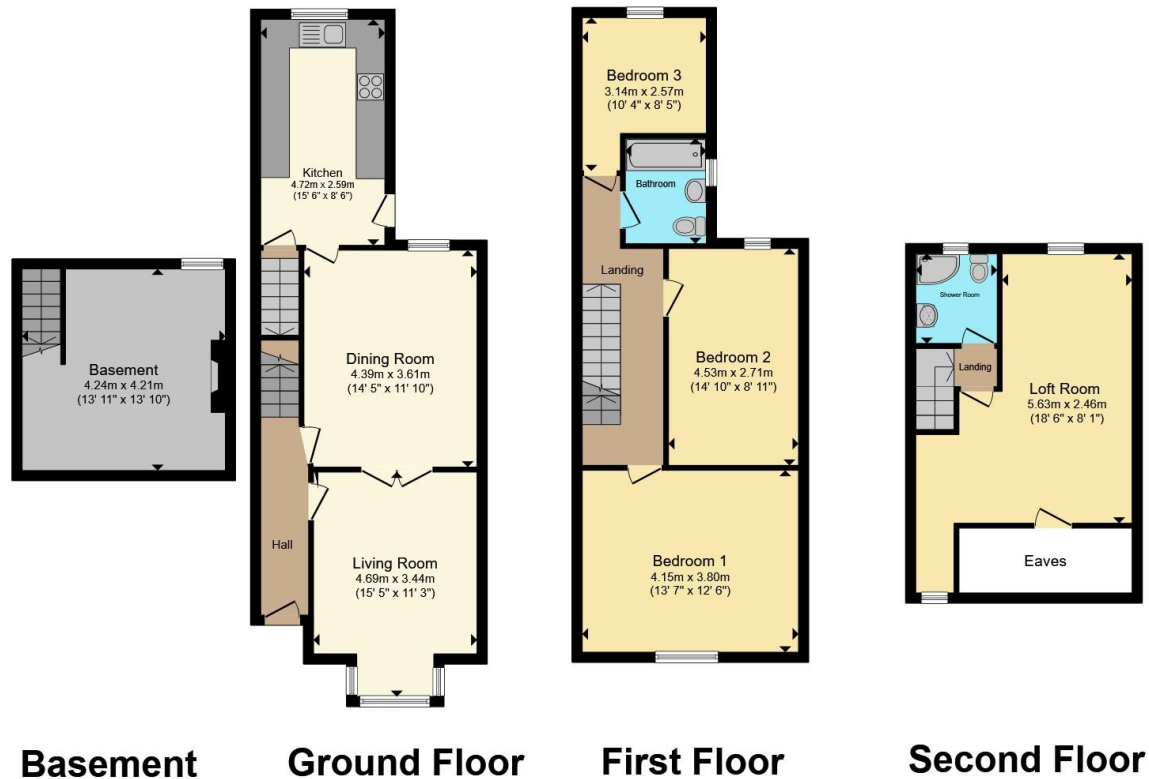
Agents Note

We have been unable to verify if Building regulation Certificate has been provided for the previous works. We ask that you make enquiries to satisfy yourself and seek guidance from your conveyancer.









Basement

Ground Floor

First Floor

Second Floor

Total floor area 146.5 m² (1,576 sq.ft.) approx

This floor plan is for illustrative purposes only. It is not drawn to scale. Any measurements, floor areas (including any total floor area), openings and orientation are approximate. No details are guaranteed, they cannot be relied upon for any purpose and they do not form part of any agreement. No liability is taken for any error, omission or misstatement. A party must rely upon its own inspection(s). Powered by www.propertybox.io



To view this property please contact Connells on

T 01622 751034
E maidstone@connells.co.uk

30 King Street
MAIDSTONE ME14 1BS

EPC Rating: D Council Tax Band: C

Tenure: Freehold

view this property online connells.co.uk/Property/MAI408345



1. MONEY LAUNDERING REGULATIONS Intending purchasers will be asked to produce identification documentation at a later stage and we would ask for your co-operation in order that there will be no delay in agreeing the sale. 2. These particulars do not constitute part or all of an offer or contract. 3. The measurements indicated are supplied for guidance only and as such must be considered incorrect. Potential buyers are advised to recheck measurements before committing to any expense. 4. We have not tested any apparatus, equipment, fixtures, fittings or services and it is in the buyers interest to check the working condition of any appliances.

Connells Residential is registered in England and Wales under company number 1489613, Registered Office is Cumbria House, 16-20 Hockliffe Street, Leighton Buzzard, Bedfordshire, LU7 1GN. VAT Registration Number is 500 2481 05.

See all our properties at www.connells.co.uk | www.rightmove.co.uk | www.zoopla.co.uk

Property Ref: MAI408345 - 0011