



# Spirit Quay

London, E1W

£4,500 per month  
(£1,038.46 per week)

SHORT LET\* Well presented three bedroom town house within this popular West Wapping location and overlooking the quiet pedestrianised canal.

**CHESTERTONS**



# Spirit Quay

London, E1W

- SHORT LET
- THREE BEDROOM
- TWO BATHROOMS
- ALL BILLS INCLUDED



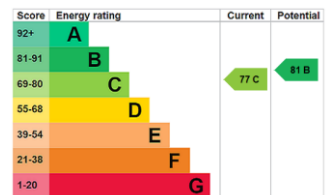


#### SHORT LET\*

Well-presented three bedroom town house within this popular West Wapping location and overlooking the quiet pedestrianised canal. The house offers a larger than average dual aspect reception, a fully fitted kitchen diner with doors opening to the South facing Garden, a modern bathroom and an additional cloakroom.

Ideally located in West Wapping, close to St Katharine's Docks with a wide selection of pubs, bars, restaurants and cafes nearby. Only a short walk from Tower Hill stations, DLR links, Wapping Overground Station, and buses right around the corner for an easy access to the City, London Bridge, Canary Wharf or Shoreditch.

**Minimum Term:** 2 months  
**Deposit Required:** £5,192.31  
**Local Authority:** Tower Hamlets  
**Council Tax Band:** E  
**EPC Rating:** C  
**Furnished**



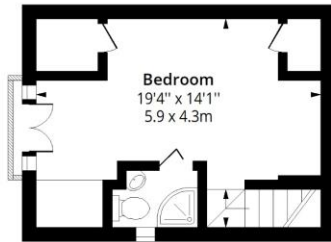
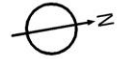
#### *Chestertons Tower Bridge Lettings*

220 Tower Bridge Road  
 Tower Bridge  
 London  
 SE1 2UP  
[towerbridgelettingsusers@chestertons.co.uk](mailto:towerbridgelettingsusers@chestertons.co.uk)  
 02073576911  
[chestertons.co.uk](http://chestertons.co.uk)

Additional tenant charges apply (fees apply to non-AST tenancies only)  
 Tenancy Agreement Fee: £300  
 References per Tenant/Guarantor: £60  
 Inventory check (approx. £100 – £250 inc. VAT)  
[chestertons.co.uk/property-to-rent/applicable-fees](http://chestertons.co.uk/property-to-rent/applicable-fees)

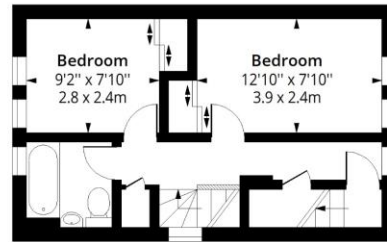
# Spirit Quay, E1W

Approx. Gross Internal Area 993 Sq Ft - 92.25 Sq M  
Approx. Gross Garage Area 146 Sq Ft - 13.56 Sq M



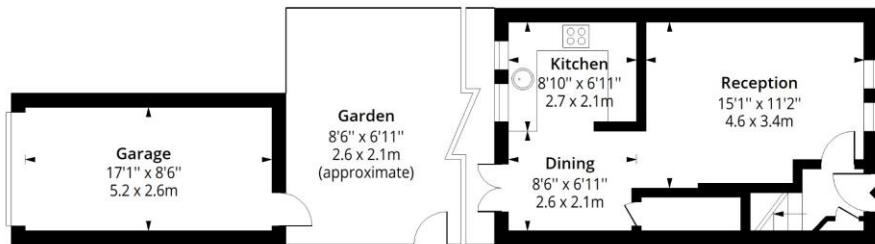
**Second Floor**

Floor Area 284 Sq Ft - 26.38 Sq M



**First Floor**

Floor Area 354 Sq Ft - 32.89 Sq M



**Ground Floor**

Floor Area 355 Sq Ft - 32.98 Sq M



Measured according to RICS IPMS2. Floor plan is for illustrative purposes only and is not to scale. Every attempt has been made to ensure the accuracy of the floor plan shown, however all measurements, fixtures, fittings and data shown are an approximate interpretation for illustrative purposes only. 1 sq m = 10.76 sq feet.

lpaplus.com

Date: 8/7/2025



This paper is  
100% recyclable