

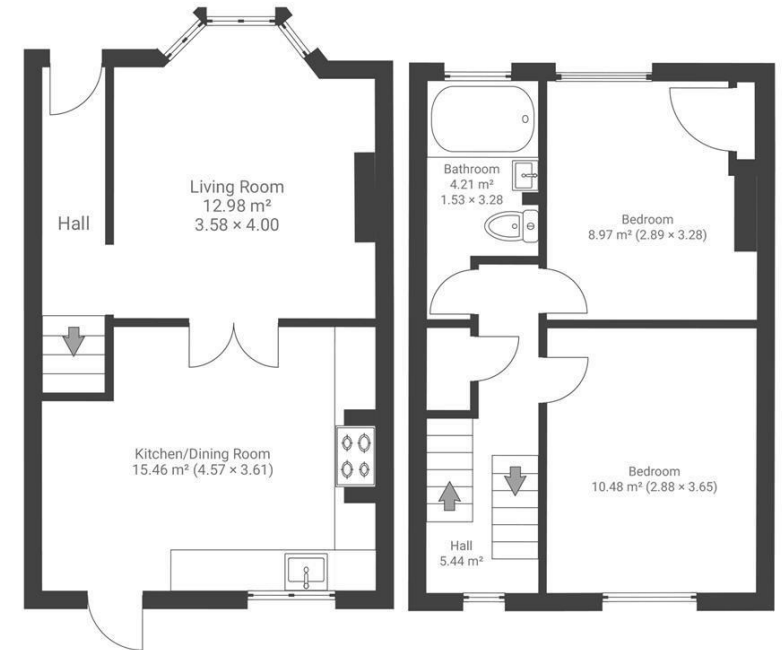
Boardwalk

Whitehall Road

, BRISTOL

Whitehall Road REDFIELD

APPROXIMATE FLOOR AREA
65 SQM / 700 SQFT



Boardwalk

Whitehall Road , BRISTOL



£375,000



2 Bedrooms



BS5 9BE



1 Bathrooms

Having instant access to the cycle path has been a dream, we can step out the door and feel so connected to our community. The house feels like an oasis of calm in the middle of a vibrant part of the city. We also have a lovely community of neighbours down the back lane, always helping each other out!

